

encore

OCTOBER 2016

arts programs

2016-2017 SEASON

Seattle Children's Theatre

THE LION, THE WITCH  
AND THE WARDROBE

OCTOBER 13 - DECEMBER 11, 2016



**Bischofberger**  
*Violins* est. 1955

Professional  
Repairs  
Appraisals  
& Sales

1314 E. John St.  
Seattle, WA  
206-324-3119  
[www.bviolins.com](http://www.bviolins.com)



WE BUY, SELL AND TRADE  
your gently worn children's  
clothing, toys and gear.  
Also, new gift items for baby and mom.

**3432 NE 45th Street, Seattle**  
**206.525.0619**  
**[www.kookaburra-kids.com](http://www.kookaburra-kids.com)**

Mention this ad for  
**\$10 off \$25 purchase**

October 2016  
Volume 21 No. 1

**encore**  
arts programs

Paul Heppner  
*Publisher*

Susan Peterson  
*Design & Production Director*

Ana Alvira, Robin Kessler,  
Shaun Swick, Stevie VanBronkhorst  
*Production Artists and Graphic Design*

Mike Hathaway  
*Sales Director*

Brianna Bright, Joey Chapman,  
Ann Manning, Rob Scott  
*Seattle Area Account Executives*

Marilyn Kallins, Terri Reed  
*San Francisco/Bay Area Account Executives*

Sara Keats  
Jonathan Shipley  
*Online Editors*

Jonathan Shipley  
*Ad Services Coordinator*

Carol Yip  
*Sales Coordinator*



 **WILDLIGHTS**  
*presented by Sound Credit Union*

**SEE THE ZOO  
BRIGHTER THAN EVER!**

**NOVEMBER 25 – JANUARY 1**  
**5:30 – 8:30 P.M. NIGHTLY**

*Free parking in zoo lots every night!*  
*Closed December 24 & 25*

Tickets and information at:  
**[WWW.ZOO.ORG/WILDLIGHTS](http://WWW.ZOO.ORG/WILDLIGHTS)**

**SOUND**  
CREDIT UNION  
YOUR MEMBERSHIP. YOUR MONEY. YOUR WAY.  
federally insured by ncuca

**CityArts**

Leah Baltus  
*Editor-in-Chief*

Paul Heppner  
*Publisher*

Dan Paulus  
*Art Director*

Jonathan Zwickel  
*Senior Editor*

Gemma Wilson  
*Associate Editor*

Amanda Manitch  
*Visual Arts Editor*

**encore**  
media group

Paul Heppner  
*President*

Mike Hathaway  
*Vice President*

Genay Genereux  
*Accounting & Office Manager*

Sara Keats  
*Marketing Manager*

Ryan Devlin  
*Business Development Manager*

**Corporate Office**  
425 North 85<sup>th</sup> Street Seattle, WA 98103  
p 206.443.0445 f 206.443.1246  
[adsales@encoremidiagroup.com](mailto:adsales@encoremidiagroup.com)  
800.308.2898 x105  
**[www.encoremidiagroup.com](http://www.encoremidiagroup.com)**

Encore Arts Programs is published monthly by Encore Media Group to serve musical and theatrical events in the Puget Sound and San Francisco Bay Areas. All rights reserved. ©2016 Encore Media Group. Reproduction without written permission is prohibited.



A co-ed academic  
community devoted  
to helping students  
successfully navigate the  
challenging and strangely  
wonderful complexities  
of early adolescence.



Visit our web site for information about our unique program and the admissions process.

This presentation of *The Lion, the Witch and the Wardrobe* was made possible by the generosity of

SEASON SPONSORS

ARTSFUND



Microsoft



WITH SUPPORT FROM SHOW SPONSOR



Kibble & Prentice

# Seattle Children's Theatre

presents

## THE LION, THE WITCH AND THE WARDROBE

By **C.S. Lewis**

Dramatized by **Adrian Mitchell**

Music composed by **Shaun Davey**

Directed by **Linda J. Hartzell**

Music Directed by **Jeff Bell**

Choreography by **Marianne Roberts**

Fight Choreography by **Geoffrey Alm**

### THE CAST

Ensemble	Scott Brateng	Mr. Beaver, Ensemble	David Pichette
White Witch	Julie Briskman	Ensemble	Sarah Russell
Ensemble	Taryn Darr	Turnus, Ensemble	Aaron Shanks
Ensemble	Paul Flanagan	Peter, Ensemble	Mike Spee
Grumpskin, Ensemble	Richard Gray	Maugrim, Ensemble	Richie Stone
Edmund, Ensemble	Spencer Hamp	Lucy	Miranda Antoinette Troutt <sup>+</sup>
Professor, Father Christmas, Griffin	Hugh Hastings	Understudy	Duncan Frost <sup>+</sup>
Aslan, Ensemble	Terence Kelley <sup>+</sup>	Understudy	Randy Scholz
Susan	Claire Marx	Understudy	Bryan Tramontana
Mrs. Beaver, Mrs. Macready, Ensemble	Jayne Muirhead	Understudy	Leah Scofield
Ensemble	Alana Peters		

*Stage Manager*  
Shellie Stone

*Assistant Stage Manager*  
Rachael Dorman

*Production Assistant*  
Adrienne Mendoza

*Dialect Coach*  
Judith Shahn

*Dance Captain*  
Taryn Darr

*Scenic Designer*  
Carey Wong

*Costume Designer*  
Catherine Hunt

*Lighting Designer*  
Rick Paulsen

*Sound Designer*  
Chris R. Walker

*Assistant Sound Designer*  
Jeff Miller

*Puppet Designer/Coach*  
Annett Mateo

*Wig Master*  
Joyce Degenfelder

Produced by special arrangement with Dramatic Publishing, Woodstock, Illinois



Seattle Children's Theatre is a professional company employing members of Actors' Equity Association.

+ Drama School Faculty

## A Note from the Artistic Director



Dear Friends,

Welcome to Seattle Children's Theatre's 42nd season. It is my absolute pleasure to usher in this new season of adventure. I write this letter in the midst of my own personal adventure celebrating my first three weeks as SCT's new Artistic Director. I was drawn to this organization because of its unparalleled commitment to creating the best possible theatre for families. SCT deeply values every audience member both current and future. Our charge is to inspire their intellect, imagination and heart. Each day the artists, artisans, staff and trustees at SCT bring their innovation, mindfulness and voracious curiosity to this mission. The result is a community of makers who offer surprise, provocation and boundless joy.

C. S. Lewis was known for saying that a child's story is the best art form for something you have to say. In *The Lion, the Witch and the Wardrobe* he says something about good, evil, belief, forgiveness, betrayal, adventure and so much more. When I read *The Lion, the Witch and the Wardrobe* as a young person, I was always struck by the opening events in Narnia. Lucy hears the pitter-patter of feet and then, as Lewis describes, "something strange steps out." What we know now that Lucy doesn't in the moment, is that "something strange" is a gentle faun named Mr. Tumnus. Rather than run to the safety of her siblings, Lucy receives Mr. Tumnus' kindness. She is curious about him. What an adventure we would miss if Lucy hadn't moved beyond the "strangeness" of Mr. Tumnus. This meeting reminds us our opportunities to do good in the world expand when we seek out past our own comfortability. Moving past fear is where great adventure lies.

At the helm of *The Lion, the Witch and the Wardrobe* is the incomparable Linda Hartzell, SCT's Artistic Director Emerita. I am thrilled in my first season at SCT to share the breadth of her artistry with you and later in the season on the world premiere of a new play she co-created, *Fire Station 7*. Linda's adventurous spirit is the powerful force that shaped SCT for over thirty seasons. What an absolute joy to see that spirit and heart on display in *Lion*.

Enjoy this first adventure of the 42nd season, a moment like no other. An adventure that can be as expansive as Narnia or as deeply personal as the beginning moments of a new role. And I invite you to come back to experience more magic, invention and surprise with us this season.

Sincerely,

**Courtney Sale**

## A Message from Season Sponsor



Seattle Children's Theatre and Microsoft share a passion for creativity, learning and excellence. Year after year, Seattle Children's Theatre delivers high quality entertainment that captivates the imaginations of young people, and their families, throughout the Pacific Northwest. That's why Microsoft Philanthropies is proud to sponsor the 2016-17 season.

Community involvement is an integral part of our culture at Microsoft. We support the work of local nonprofits and encourage employee investment and volunteerism. Our employees respond in an incredible way, volunteering thousands of hours and contributing more than \$60 million each year to local nonprofits, including Seattle Children's Theatre.

A thriving arts and cultural scene, a network of human services providers, and a world-class education system are critical to the continued vitality and attractiveness of the Puget Sound region. Through partnerships with organizations such as Seattle Children's Theatre, we aim to create an environment where the arts will thrive for generations to come.

On behalf of Microsoft and our employees in the Puget Sound area, we thank Seattle Children's Theatre for enriching our community.

Enjoy the show!

**Mary Snapp**

Corporate Vice President Microsoft Philanthropies

# Synopsis

## England, World War II

Peter, Susan, Edmund and Lucy Pevensie have been evacuated from London to the safety of Professor Kirk's manor house in the English countryside. While exploring the house, the children find an interesting old wardrobe, and Lucy stays behind to explore it alone. Pushing past the fur coats inside, she finds herself in a snowy forest. Mr. Tumnus, a faun, appears, welcoming her to Narnia. Upon learning she is human, he invites her to his cave, where Lucy learns he works for the evil White Witch, who's cursed Narnia to eternal winter but never Christmas, and wants all humans captured.

Unwilling to seize Lucy despite his orders, Tumnus sets her free, where she returns to the manor and tells her siblings what happened. They all think she's lying. Later, Lucy enters the wardrobe again; Edmund secretly follows her.

He's greeted by the White Witch, who realizes the boy and his siblings are those prophesied to rule Narnia and end her reign. She persuades Edmund to bring them to her, promising to make him prince.

Edmund finds Lucy and they return to the manor, where he lies, saying Narnia is make-believe. Eventually, the children all find themselves in the wardrobe together, taking them to Narnia, disproving Edmund, and proving Lucy was telling the truth.

Lucy takes them to Tumnus, but finds he's been arrested for High Treason for setting her free. They set out to rescue him and soon meet friendly Mr. and Mrs. Beaver, who inform them that Aslan, the Great Lion, is on the move! Only Aslan can save Tumnus, end the Witch's spell, and put all to rights. They are to meet him at the Stone Table.

Suddenly, the group realizes Edmund is missing. He's gone to the White Witch to reveal his siblings' whereabouts and plans. To his shock, she imprisons him for coming alone, orders his siblings and the Beavers killed, then makes haste for the Stone Table.

As the Beavers and Pevensies also journey there, they witness the first sign of the Witch's failing spell: Father Christmas' arrival, bearing gifts for them all! To Peter, he gives a sword and shield. To Susan, a horn. To Lucy, a bottle of healing cordial.

The Pevensies arrive at the Stone Table where Aslan and his army of good creatures wait. Aslan promises he'll save Edmund, when Susan sounds her horn in danger as the Witch's wolf Maugrim ambushes them. Peter fights him, and after a brutal battle plunges his sword through Maugrim's heart.

The Witch, in the woods, hears of Maugrim's death and tries to kill Edmund, when Aslan's army attacks and frees him, whereupon Edmund apologizes to everyone for his wrongs. But the Witch claims Edmund by the law of Deep Magic: every traitor belongs to her or Narnia will perish. Even Aslan cannot go against Deep Magic. But when the Lion speaks with her in private, she renounces her claim.

That night, Aslan meets her at the Stone Table to fulfill their bargain and sacrifice himself in Edmund's place. The Witch kills him, appeasing the Deep Magic, making her ruler of Narnia forever. She leads her army to finish the war.

Susan and Lucy weep over Aslan's dead body, when there's a deafening crack. The table breaks, and Aslan appears—not a ghost, but alive. He tells them of the deeper magic, unknown to the Witch: when an innocent victim is willingly killed in a traitor's stead, death itself is reversed.

Quickly, they rush to free Tumnus and other prisoners and join the battle, where Peter and Edmund are fighting the White Witch. She stabs Edmund and is on the verge of defeating Peter, when Aslan attacks and kills her, whereupon her army flees. The battle is won. Lucy revives Edmund with her cordial and tends to the wounded.

Afterward, Aslan crowns Peter, Susan, Edmund and Lucy the kings and queens of Narnia. They rule for many years, until one day deep in the woods, they discover the wardrobe and pass through it, emerging as children again. Not a second has passed. The siblings rush to tell the professor their amazing tale and he believes every word, reassuring them in Aslan's own words: "Once a king or queen in Narnia, always a king or queen in Narnia."

## Board & Committees

### Board of Trustees

**Stacie Foster** *PRESIDENT*

**Aiko Bethea** *FIRST VICE PRESIDENT*

**Barbara Larimer** *SECOND VICE PRESIDENT*

**Laura Smith** *TREASURER*

**Mimi Gan** *SECRETARY*

Eve Alvord	David Landau
Ashley Andrew	Natalie Matthews
Jennifer Berger	Zoe Minkove
Heather Shaw Blahous	Jim Mitchell
Ryan Boone	Eleanor C. Nolan
Kendall Cammermeyer	Alexander Oki
Corry Hart Clayville	Laurie Oki
Lara R. Constable	Andrew Parcel
Bob Evans	Zach Pauw
Marie T. Farrelly	Louise Pietrafesa
Kate Forsyth	Scott Ruthfield
Alice Forsythe	Lee-Norah Sanzo
Tiffany Gilbert	Tylitha Stewart
Adam Hamilton	Katy Tonkin
Karin Jones	Stephanie True
Matthew Kochel	Wanda Wong

### SCT Foundation Board

Richard Bendix, <i>CHAIR</i>	Laura Smith
Aiko Bethea	Laurie Oki
Barb Larimer	Lee-Norah Sanzo
Bob Evans	Mark Sherman
Dan Manning	Mimi Gan
Eve Alvord	Natasha Rivers
Kerry Richards	Stacie Foster

### Teacher Advisory Committee

Andrew Rabioff, *INGLEWOOD MIDDLE*  
Barbara Kearney-Schupp, *ST. EDWARD SCHOOL*  
Chelle Downey-Magee, *ISSAQUAH MONTESSORI*  
Dano Beal, *LAFAYETTE ELEMENTARY*  
Emily Velling, *GENESEE HILL ELEMENTARY*  
Emma Goliff, *PANTHER LAKE ELEMENTARY*  
Gerri Goss, *NORTH HILL ELEMENTARY*  
Ginnie Brossard, *MARVISTA ELEMENTARY*  
Jennie Proby, *CHRYSLIS SCHOOL*  
Marilyn Mears, *SCHMITZ PARK SCHOOL*  
Nancy Brooks, *RETIRED TEACHER*  
Peter Weschler, *ROXHILL ELEMENTARY*  
Ruth Bookwalter, *PINE TREE ELEMENTARY*

*If you are an educator and would like more information about this committee, please email Don Fleming at donf@sct.org*

# The Cast



**Scott Brateng** (*Leopard, Snakey, Ensemble, Fight Captain*) is thrilled to be making his Seattle Children's Theatre debut! NY/Tours:

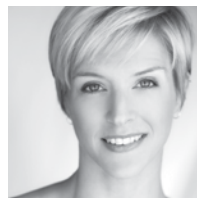
*Irving Berlin's White Christmas, Sugar Babies, Cabaret* (Two Ladies). Regional: *Billy Elliot* (Older Billy), *My Fair Lady* and *Mary Poppins* at Village Theatre, *A Chorus Line* (Greg), *Spamalot, Oliver, Secondhand Lions, Damn Yankees* and more at the 5th Avenue, *Singin' In The Rain, West Side Story, Evita, Hello Dolly, Joseph and the Amazing Technicolor Dreamcoat, The Best Little Whorehouse in Texas* in theatres all over the USA. Training: BFA NYU/Tisch/CAP21 '04, Pacific Northwest Ballet. Scott has also started choreographing in the past couple years and is excited that this new facet of his work is starting to be seen around the Seattle theatre community! Thanks to his family for their love and support.



**Julie Briskman** (*White Witch*) has been seen at SCT in many roles including The Baroness in *Chitty Chitty Bang Bang*, The Wicked

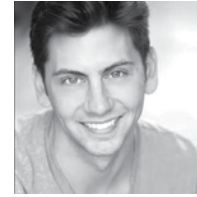
Witch in *The Wizard of Oz*, Kate Barlow in *Holes*, and The White Witch in SCT's first production of *The Lion, the Witch and the Wardrobe*. Julie is the Founding Artistic Producer of THE SEAGULL PROJECT, the

first American theater ensemble in history to be invited to the renowned Ilkhom Theater in Tashkent Uzbekistan, where they performed their highly acclaimed production of *The Seagull* in which she played Arkadina. Last year she appeared as Olga in *The Three Sisters*, which received The Gregory Falls Award for Outstanding Production of a Play. She will next take on the role of Ranevskaya in *The Cherry Orchard*, to be produced in 2017 in partnership with ACT Lab. Julie is honored to be a recipient of the Lunt-Fontanne Fellowship.



**Taryn Darr** (*Naiad, Spike, Ensemble, Dance Captain*) is honored to return to Narnia once again, after being a part of the 2002 and 2003

casts! She plays seven (!) different characters onstage. Can you spot them all? (She bets her Mom can!) A proud UW grad, Gregory Award Nominee and member of Actor's Equity, Taryn considers herself lucky to be a part of the vibrant theatre community in Seattle. She has performed locally with The 5th Avenue and Village Theatres among others. Last year, she was a swing for SCT's *Elephant and Piggie*, stepping in a few times as a Squirrelle. Fun facts: Taryn's favorite color is blue; she thinks Turkish Delight is kinda gross; and she has the cutest tuxedo kitty named Stella. More at [taryndarr.com](http://taryndarr.com). Enjoy the show!



**Paul Flanagan** (*Satyr, Warts, Ensemble*) is thrilled to be making his SCT debut. Past credits: "The Backyardigans Live" with Nickelodeon;

providing movement for the character of Pablo the Penguin for the television show; the Broadway revival national tour of *A Chorus Line* (Al); 5th Avenue Theatre: *A Chorus Line* (Al), *How to Succeed...*, *The Sound of Music, Oliver!*, *Paint Your Wagon*. Village Theatre: *Fiddler on the Roof, Chicago*. Upcoming shows: *The Pajama Game* at the 5th. All the love to family, friends and Alex! For more info please visit [Paulflanagan.com](http://Paulflanagan.com). It's fresh!



**Richard Gray** (*Grumpskin, Ensemble*) was last seen at SCT as Baron Bomburst in *Chitty Chitty Bang Bang*, The Centipede in

*James and the Giant Peach*, and Pinky in *Dick Whittington and His Cat* (for which he also wrote the musical score). Other SCT scores include *Lyle the Crocodile, Time Again in Oz* and *Little Rock*. He has performed in 23 productions at the 5th Avenue Theatre including *Assassins, Carousel, Spamalot, A Room with a View, ELF - The Musical, The Music Man* and *First Date*. At the Village Theatre, his roles include Albin/ZaZa in *La Cage aux Folles*, Max Bialystock in *The*

## Theatre Etiquette

Ever wonder why we make audience requests before a performance? It's to respect you and the actors, and for these reasons, too:

"Please completely turn off all electronic devices including cell phones, cameras and video recorders. Also, taking pictures or video is not allowed."

We are fortunate to work with very talented performers, designers, playwrights and directors at SCT. One of our responsibilities to these artists is to help protect their work from illegal distribution or piracy. Contractually, the use of images of their designs and recordings of their work is very specifically controlled. We appreciate that people want to capture a memory to enjoy later, but it is actually a violation of contract, and of trust between the artists and the audience. You are welcome to take pictures in the lobby, of family and friends in their seats before or after the show, or when talking to the actors at autographs after the show, with their permission. If you are not sure if a photograph is permitted, please ask.

"If you are with someone who becomes noisy or restless, please be kind to your neighbors and use our quiet room which is located in the back of the theater over your right shoulder."

We love our audiences and want them to express themselves during the show—laughing, clapping, shouting in amazement. It's part of the community experience. But everyone has moments when they just don't want to be where they are. And sometimes they express this quite loudly. The quiet room offers a place to see and hear the show, while having a chance to settle in private. Please keep in mind that although it is called the "quiet room" it is not completely sound-proof.

Producers, the King in *Big River*, Bud Frump in *How To Succeed...* and Amos Hart in *Chicago* (2013 Gregory Award nomination). Up next: *Murder For Two* (ACT Theatre).



**Spencer Hamp**  
(Edmund, *Bat*) This is Spencer's first performance with Seattle Children's Theatre. Most recently, he

appeared in Sheila Daniels' production of *The Winter's Tale* in the Leo K. Theatre at The Rep (Seattle Shakespeare Company). Earlier this year, Spencer played Kincaid in the world premiere, two-part adaptation of David James Duncan's *The Brothers K* (Book-It Repertory Theatre) and played Don in *Buzzer* (ACT Theatre and AJ Epstein Presents). Spencer received a Bachelor of Arts in Drama and Sociology from the University of Washington in 2014. He is a proud member of The Seagull Project ensemble. Upcoming project: *The Cherry Orchard* (ACT Theatre and The Seagull Project).



**Hugh Hastings**  
(Professor, *Father Christmas*, *Griffin*) Over the past twenty-something years Hugh has appeared in many

SCT productions including *Pippi Longstocking*, *Adventures with Spot*, *The Wizard of Oz*, *Lyle the Crocodile*, *The Bremontown Musicians*, *Peter Pan*, *The Magic Mrs. Piggle-Wiggle* (three different productions), *The Hoboken Chicken Emergency*, *Prince Brat and the Whipping Boy*, *The Cricket in Times Square*, *Mr. Popper's Penguins*, and both Hardy Boys mysteries. Hugh has also been seen in many productions at ACT, The 5th Avenue Theatre, Village Theatre, Seattle Shakespeare Company and the Oregon Shakespeare Festival. Hugh has also been a teacher of acting for the 5th Avenue Theatre, SCT, UW, OSF, and Cornish College of the Arts. With his wife, Connie Corrick, Hugh is a frequent performer (and board member) at West Seattle's Kenyon Hall.

Live Theater for Kids!

**The Emperor's New Clothes**

Oct 23 – Nov 20

**Tickets \$15**

Playing in Renton, Kirkland, Everett, Shoreline & Seattle

**StoryBook Theater**

**The Elves & the Toymaker**

Nov 27 – Dec 20

**Tickets \$18**

Playing in Renton, Kirkland & Seattle

Adaptations by Loni Brockman  
Music & Lyrics by Susan Bardsley

[www.storybooktheater.org](http://www.storybooktheater.org) • 425.820.1800

This delightful family-friendly favorite is back to spread holiday cheer!

**NOV 30 - DEC 28**

**A CHARLIE BROWN Christmas**

By Charles M. Schulz. Based on the television special by Bill Melendez and Lee Mendelson. Stage Adaptation by Eric Schaeffer. By Special Arrangement with Arthur Whitlaw and Ruby Posson

**TAPROOT THEATRE COMPANY**

206.781.9707  
TAPROOTTHEATRE.ORG  
204 N 85TH ST, SEATTLE

Weekly all-ages performances. Ask the Box Office or check taproottheatre.org for details.

**A-1 PIANO**  
SALES RENTALS MOVING

**DID YOU KNOW?**

- Playing piano strengthens hand-eye coordination and fine motor skills
- Three years of lessons in grade school results in higher academic test scores
- Practicing piano develops concentration and confidence

Piano rentals as low as **\$25** per month

7020 Greenwood Ave N.  
206.783.7055 • [info@a-1pianos.com](mailto:info@a-1pianos.com)  
**A-1PIANOS.COM**

NOW PUGET SOUND'S EXCLUSIVE BALDWIN DEALER  
**Baldwin**

**EPIPHANY SCHOOL**

## OPEN HOUSE

**Thursday, December 1, 2016  
6:00-8:30 pm**

Learn more at [epiphanyschool.org](http://epiphanyschool.org) or contact Greg Jones, Director of Admission at (206) 720-7663 or [gjones@epiphanyschool.org](mailto:gjones@epiphanyschool.org)

3611 East Denny Way, Seattle, WA 98122

**Epiphany School** is an independent school for students Pre-Kindergarten through Fifth Grade



1325 1st Avenue, Seattle  
206.682.0168

2626 NE University Village Street, Seattle  
206.528.9969

10036 Main Street, Bellevue  
425.453.1698

5900 Airport Way South, Seattle  
206.508.4535

800.422.3726  
franschocolates.com

## K-8 OPEN HOUSE

January 5, 2017  
5:00 - 7:00 PM



SEATTLE COUNTRY DAY SCHOOL  
206-691-2625 seattlecountryday.org

## The Cast



**Terence Kelley** (*Aslan, Ensemble*) Terence is honored to be back at SCT! Favorite past roles include Aslan in *The Lion, the Witch and the Wardrobe*,

Andre in *Ain't Misbehavin'*, Harold Hill in *The Music Man*, Tommy Albright in *Brigadoon*, El Gallo in *The Fantasticks*, and Hoke in *Driving Miss Daisy*. He has directed and choreographed for Theater Arts Guild, Studio East, Mercer Island and Shorecrest High School. In 2009 Terence received an Excellence in Education Award for teaching Drama at the University of Washington. Your child may also have seen Terence at their elementary school, performing Recycling Shows, like *Finding Bigfoot*. Terence would like to give a shout out to his wife and kids!



**Claire Marx** (*Susan*) is so excited to be making her debut with Seattle Children's Theatre. As a recent graduate of Cornish College of the Arts

(BFA, Musical Theater), she has worked as an actress, pianist, music director, and arts educator with Seattle Shakespeare Co., Seattle Public Theater, and Village Theatre. Credits include: Martha in *The Children's Hour*, Brünnhilde in *Das Barbecü*, Witch in *Hansel and Gretel* (Cornish College), Amber in *Hairspray*, Mary Jane in *Big River*, Hunyak in *Chicago* (Ft. Peck Summer Theatre), Liesl in *The Sound of Music*, Polly Browne in *The Boy Friend* (Starlight Mountain Theatre), and Lady Montague in *Romeo and Juliet* (Seattle Shakespeare Co.).



**Jayne Muirhead** (*Mrs. Beaver, Mrs. Macready, Ensemble*) *The Lion, the Witch and the Wardrobe* is Jayne's 22nd production with SCT. She began in

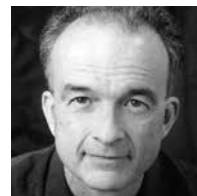
1992 with *Doctor Dolittle in the Moon*, and continued through *Jack and the Beanstalk*, *Just So and Other Stories*, *Bunnicula*, *Prince Brat and the Whipping Boy*, *The Velveteen Rabbit*, *Stellaluna*, *Go, Dog. Go!*, *Mrs. Piggle Wiggle* (twice!), *Disney's High School Musical*, *The Lion, the Witch and the Wardrobe* (thrice!), *The Bremontown Musicians*, *Lyle the Crocodile*, *Adventures with Spot*, *The Wizard*

*of Oz*, *James and the Giant Peach*, *Goodnight Moon* (twice!) and *Dick Whittington and His Cat*. What a wild and delightful ride introducing so many of you to the wonderful world of live theater. When not at SCT she works at other theaters . . . but doesn't have quite as much fun.



**Alana Peters-Whiting** (*Dryad, Slimey, Ensemble*) is excited to make her Seattle Children's Theatre debut! Alana grew up watching shows at

SCT and is honored to be able to perform on stage. She has performed locally at the 5th Avenue Theatre (*The Music Man*, *Oliver!*, *West Side Story*), Village Theatre (*The Producers*, *Funny Girl*, *My Fair Lady*), Seattle Musical Theatre (*South Pacific*, *Jesus Christ Superstar*, *Dirty Rotten Scoundrels*, *Gypsy*, *A Chorus Line*), and SecondStory Repertory (*Kiss of the Spider Woman*, *Zombie Prom*, *Joseph and the Amazing Technicolor Dreamcoat*). Much love to Elliot and Abelard!



**David Pichette** (*Mr. Beaver, Ensemble*) Previously at SCT, David has been seen in *The Secret Garden*, *Pharaoh Serket and the Lost Stone of Fire*, John

in *Brooklyn Bridge*, and most notably as the villainous Captain Hook in *Peter Pan*. He has worked at most of the theatres in the Seattle area in the past 34 years, most recently at ArtsWest as Willy Loman in *Death of a Salesman* and at the 5th Avenue Theatre appearing as Major-General Stanley in *The Pirates of Penzance*, Fagin in *Oliver!*, and Max in *The Sound of Music*. For the last two seasons he has been at the Utah Shakespeare Festival, portraying Malvolio in *Twelfth Night*, the Fool in *King Lear*, Justice Shallow in *Henry IV, Part 2*, and Gremio in *The Taming of the Shrew*.



**Sarah Russell** (*Centaur, Stretchy, Ensemble*) is thrilled to be making her Seattle Children's Theatre debut! Past credits include *Big*

*Fish*, *A Charlie Brown Christmas* (Taproot Theatre), *Grease*, *Hairspray In Concert!*, *Rent* (5th Avenue Theatre), *My Heart is the Drum*

(Village Theatre), *Legally Blonde* (SecondStory Rep), *Julius Caesar* (Seattle Shakespeare Co.), *Little Red Riding Hood* and *A Little Mermaid* (StoryBook Theatre). Big thanks to the cast, crew, and everyone who worked on putting this beautiful show together.



**Aaron Shanks** (*Tummus*, *Eagle*, *Pig*, *Ensemble*) is pleased to return to SCT to reprise his role as Mr. Tummus. He has performed in

musicals, operas, concerts, churches and cabarets for 20 years. He regularly appears at the 5th Avenue Theatre and Village Theatre. He has also performed at Tacoma Opera, The Inverse Opera, Seattle Opera Guild, SecondStory Repertory, and Spectrum Dance Theater. Regionally, he has appeared at the Ordway Theater and Rogue Music Theatre. Mr. Shanks is a board member of Showtunes Theatre Company where he promotes and produces rarely performed gems of the musical theatre canon. Born and raised in Puyallup, WA, Mr. Shanks holds a B.A. in Music and a B.B.A. with a concentration in Marketing from WWU.



**Mike Spee** (*Peter*, *Hunchback*) It is so special to be a part of this show, having watched from the audience the last time it was produced at

SCT, so thank you to the entire production team for this opportunity. Previous shows at SCT include *James and the Giant Peach*, *Dick Whittington and His Cat*, *Goodnight Moon*, and *The Cat in the Hat*. Other favorite credits around town: *My Fair Lady*, *Fiddler on the Roof*, *Anne of Green Gables* (Village Theatre), *Spring Awakening* (Balagan Theatre), and *Godspell* (Taproot Theatre). Love to my girls!



**Richie Stone** (*Maugrim*, *Rumblebuffin*, *Bull*, *Ensemble*) is excited to be spending his second holiday season with SCT. Hailing

from Happy Valley, OR, he relocated to Seattle to attend Cornish College of the Arts (CCA) where he recently received his BFA in Acting



**THINK.  
ACT.  
LEAD.  
INNOVATE.**



Visit our  
**OPEN HOUSE!**  
SATURDAY  
**DEC 3**  
at 10AM

---

Grades 5-12  
425-822-5668  
eastsideprep.org

# SING-A-LONG-A SOUND OF MUSIC



JANUARY 6-8, 2017

SEE THE MOVIE  
YOU KNOW AND LOVE,  
COMPLETE WITH SUBTITLES  
SO THE WHOLE AUDIENCE  
CAN SING ALONG!



(206) 625-1900 [WWW.5THAVENUE.ORG](http://WWW.5THAVENUE.ORG)

THE 5TH AVENUE THEATRE - SEATTLE'S HOME FOR MUSICAL THEATER!

GROUPS OF 10 OR MORE CALL 1-888-625-1418 | ON 5TH AVENUE IN DOWNTOWN SEATTLE

2016/17 SEASON SPONSORS

ARTSFUND 

 **usbank**





**FRENCH AMERICAN SCHOOL  
OF PUGET SOUND**  
ÉCOLE FRANCO-AMÉRICAIN DU PUGET SOUND  
*Excellence Today, the World Tomorrow*



## BILINGUAL EDUCATION FROM YOUNG PRE-K (AGE 3) TO GRADE 8

**Open House**  
December 3, 10am

Sign up for a tour:  
[www.fasps.org](http://www.fasps.org)

- ☆ No French language experience required through Kindergarten
- ☆ International community
- ☆ Small class size
- ☆ Tuition aid available
- ☆ Daily bus and hot lunch service
- ☆ Accredited by: French Ministry of Education & NWAIS

(206) 275-3533 ext 275, [patriciab@fasps.org](mailto:patriciab@fasps.org)  
3795 East Mercer Way | Mercer Island, WA 98040



**NORTHWEST  
BOYCHOIR**

## JOIN *the* NORTHWEST BOYCHOIR!

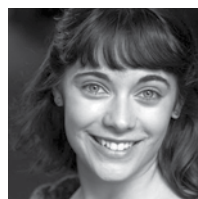
**AUDITIONS FOR BOYS 6-9 YEARS**



**CONTACT US:**  
206.524.3234 | [nwboychoir.org](http://nwboychoir.org)

## The Cast

this past May. He found his passion for performing through dance and song when he was very little and was lucky to have a family willing to foster it. Richie is just returning from instructing an intensive in Cottage Grove, OR, that he and four other Cornish alum created three years ago with StoryBook Theatre. Most recently Richie had the pleasure of playing Don Lockwood in the timeless classic, *Singing' in the Rain* (CCA). The last time he was on this stage he was an intern during his senior year in SCT's production of *Chitty Chitty Bang Bang*. Before that he played Motel Kamzoil in *Fiddler on the Roof* with Aurora Theatre Company, and Otto Kringlein from *Grand Hotel* (CCA). He can't wait to adventure with you into the fantastical land of Narnia!



**Miranda Antoinette Troutt** (*Lucy*) Miranda is thrilled to make her SCT debut exploring Narnia! She was born and raised in the greater Seattle area

where she developed a love for nature, art, and imagination. She graduated from Cornish College of the Arts with a BFA in Musical Theatre this past spring. Favorite roles include Phoebe in *The Yeomen of the Guard* with the Seattle Gilbert and Sullivan Society, Kathy Selden in *Singin' in the Rain* at Cornish Playhouse, and originating the lead role, Penelope, in *You: The Musical*. Miranda also sings opera at Pasta Fresca restaurant and is a veteran Dickens Caroler. Other passions include Salsa, Bachata, and Fusion dance, running her custom wedding gown business, and teaching circus arts at Camp ZinZanni. [Mirandaantoinettetroutt.com](http://Mirandaantoinettetroutt.com).



**Duncan Frost** (*Understudy*) is thrilled to be back at SCT after understudying Max in *Where the Wild Things Are* last spring. Other

credits include *Billy Elliot* (Miner) with Village Theatre; *The Iron Ring* (Nahusha), *Annie* (Howe, Ensemble), and *The 500 Hats of Bartholomew Cubbins* (Nidd of Didd) at Children's Theatre Company in Minneapolis, as well as roles with The Hudson Valley Shakespeare Festival, Key City Public Theatre, Troupe America, and Walking Shadow Theatre Company. Duncan is a graduate of the University of MN/Guthrie Theater BFA

Actor Training Program, and Interlochen Arts Academy. In addition to his work as an actor and director, Duncan is proud to work as a teaching artist with SCT's Drama School.



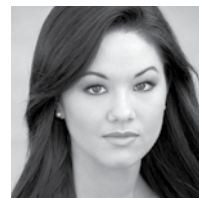
**Bryan Tramontana** (*Understudy*) is thrilled to make her SCT debut telling one of her favorite stories! Seattle favorites: *Meet Me in St. Louis* (Rose Smith),

*Iron Curtain*, *42nd Street*, *The Producers*, *Annie Get Your Gun* (Village); *George M!* (Ethel Levy), *Shenandoah* (Anne) (Showtunes). Thanks to the incredible Narnia team and love to Matthew.



**Randy Scholz** (*Understudy*) is making his SCT debut with this production! Recent Seattle credits include *My Fair Lady* (Freddy), *Cabaret*,

*Mary Poppins*, *Les Misérables*, *Big River* (Huck) with Village Theatre, and *Cotton Patch Gospel* (Matthew), *Jane Eyre*, *Illyria*, *Jeeves in Bloom*, *The Odyssey* with Taproot Theatre. A Houston, TX native, Randy is celebrating six years in the PNW with his wife, Jessica. Thanks, Linda!



**Leah Scofield** (*Understudy*) is elated to be working with SCT for the first time! She is originally from the east coast and graduated with a

Musical Theatre degree from DeSales University. Her favorite regional credits include: *Recent Tragic Events* (Harlequin Productions), *Fiddler on the Roof* (PA Shakespeare Festival), *Cinderella* (People's Light and Theatre), *Oklahoma!* (PSF), *The King and I* (NC Theatre Company), *The Tempest* (PSF), *King John* (PSF), *A Christmas Carol* (Theatre in the Park), *Snow White* (PSF), and *The Stardust Christmas Commotion* (Harlequin). She's represented by Big Fish NW Talent, and commercials include T-Mobile, Snoqualmie Casino, Xbox, and Microsoft. She thanks Linda and the entire SCT staff for this incredible opportunity. Love to my husband Ian. All glory to God. Joshua 1:9

## The Band

**Rebecca Evans** (*Cello*) grew up in San Diego playing several instruments, singing in choirs, and dabbling in high school theatrics. After finishing college there, she worked and took lessons in L.A. before heading to Ohio for graduate school. There she met her future husband Jack. They married and moved to Orlando, Florida for Rebecca's job with the Florida Symphony and recording for Disney. But the west coast called her home, and luckily Jack's job took them there. Since then, Rebecca has played regularly with the Tacoma Symphony and Opera, Bellevue Philharmonic Orchestra (now LWSO), Village Theatre, played as a Seattle Symphony substitute, with Yakima Symphony, and 5th Avenue Theatre. She's happy to be playing with Seattle Children's Theatre for the 1st time, and in Narnia!

**Ed Littlefield** (*Percussion*) is a freelance percussionist and educator based out of Seattle, WA. He performs in many ensembles of different genres around the Northwest. Ed is Tlingit from Sitka, AK and has released two albums featuring his traditional native melodies with his group The Native Jazz Quartet, *Walking Between Worlds* and *NJQ:Stories*. Ed has been playing for SCT productions for many seasons including the productions of *Disney's High School Musical*, *Lyle the Crocodile*, *The Wizard of Oz*, *James and the Giant Peach*, *Dick Whittington and His Cat*, and *Chitty Chitty Bang Bang*. In addition to his SCT work, Ed has also has written original scores for the productions of *Eurydice* and *They Don't Talk Back*, and has done sound design for *A Raisin in the Sun*. He's excited to be a part of another SCT production!

**Dewey Marler** (*Reeds*) Previous productions at SCT include *James and the Giant Peach* and *Chitty Chitty Bang Bang*. Original orchestras in *Hairspray*, *A Christmas Story*, *Catch Me If You Can*, *Disney's Aladdin* and *Secondhand Lions*. National tours of *Fiddler On The Roof* with Topol, *Damn Yankees* with Jerry Lewis, *Cabaret* with Joel Gray, *Peter Pan* with Cathy Rigby, *Bye Bye Birdie* with Tommy Tune (including Tony Awards appearance). Performances with Sammy Davis Jr., Natalie Cole, Boz Scaggs, Ray Charles, The Temptations, Johnny Mathis, Al Jarreau, Pat Boone, Linda Ronstadt, and many more. Movie Soundtracks include *Shall We Dance* with Jennifer Lopez, *The Man with Samuel L. Jackson*, *Eloise At The Plaza* (Emmy for



A Kindergarten through 8th grade independent school for gifted kids who love to learn!

Dedicated to  
*challenging*  
*nurturing*  
*and engaging*  
our students for  
over 30 years.



[www.openwindowsschool.org](http://www.openwindowsschool.org)  
Find out more - sign up for a parent tour

Discover the magic of...

# The Nutcracker

December 2 - 18

Bellevue, Auburn,  
& Renton

Tickets:

[www.evergreencityballet.org](http://www.evergreencityballet.org)

Evergreen City  
Ballet



# The Band

Outstanding Music) and *The Brave Little Toaster*. Video game soundtracks include signature sound of “Rookie” in Halo 3: ODST. He was born and raised in Seattle.

**Mat Montgomery** (*Trumpet*) has been playing trumpet for over 20 years. He earned his B.M. in Jazz Studies from the University of Washington and his Master's in Orchestral Performance from the University of Idaho. While at UI he earned his teaching certificate. Mat spent four years as a high school and beginning band director before becoming a freelance musician and composer. He has performed in many different settings including with Orchestra Seattle, Tacoma Symphony Orchestra, the PH Factor Big Band, and toured with the Glenn Miller Orchestra. In addition to performing, Mat teaches trumpet lessons and composes music. This is Mat's first year playing with Seattle Children's Theater.

## Artistic & Production

**Linda J. Hartzell** (*Artistic Director Emerita & Director*) served as Artistic Director of SCT and its Education Programs since 1984 before retiring in 2016. She received her BA in Education from the UW. She has directed over 45 plays for SCT, over 35 of which were world premieres, including *A Single Shard*, *Holes*, *Pink and Say*, *Still Life with Iris*, *The Odyssey*, *Afternoon of the Elves*, and *The Rememberer*. She recently directed *Goodnight Moon* and *Chitty Chitty Bang Bang*. She directed *The Grapes of Wrath* at Intiman Theatre. Ms. Hartzell was formerly on the board of Theatre Communications Group, and is a former vice president of the United States Center for the International Association of Theatre for Children and Young People (ASSITEJ/USA). She currently serves on the Stage Directors and Choreographers Society. She was recently honored with the prestigious Gregory Falls Sustained Achievement Award given by Theatre Puget Sound, and the Mayor's Arts Award. She has also been inducted into the College of Fellows of the American Theatre. She was a recipient of the Distinguished Achievement Award from UW College of Arts and Sciences in 1994.

**Jeff Bell** (*Music Director & Keyboards*) is very excited to be a part of this production of *The Lion, the Witch and the Wardrobe*. Previous Seattle Children's Theatre credits include *Chitty Chitty Bang Bang*, *Pippi Longstocking* and *Goodnight Moon*. Jeff's work as a music director and accompanist has also been heard at Village Theatre and Cornish College of the Arts.

**Marianne Roberts** (*Choreographer*) is delighted to be back in the magical land of Narnia! She has choreographed many productions at SCT over the past 30 years, most of them with her dear friend and collaborator Linda Hartzell. Recent favorites include *Goodnight Moon*, *Chitty Chitty Bang Bang*, *James and the Giant Peach*, *Lyle the Crocodile*, *Peter Pan*, and *The Wizard of Oz*. In addition, she has choreographed productions at most of the professional theaters in Seattle, and taught and choreographed in the Dance and Theatre departments at Cornish College of the Arts. As a dancer, Ms. Roberts trained and performed in New York City and toured internationally with New York-based concert dance companies. Hugs to my wonderful family, especially grandsons Raden and Rowan.

**Geoffrey Alm** (*Fight Choreographer*) is thrilled to be back working on *The Lion, the Witch and the Wardrobe*, and have the chance to evolve with this exciting group of artists again. His recent work at SCT was last season's *Chitty Chitty Bang Bang*. Upcoming work this fall will include *Man of La Mancha* at the 5th Ave. Theatre, and *Dangerous Liaisons* at ACT Theatre. Mr. Alm teaches Stage Fighting at Cornish College of the Arts, the PATP at the UW, and is a proud Member of SDC.

**Carey Wong** (*Scenic Designer*) has designed sets for Seattle Repertory, Berkeley Repertory, Portland Center Stage, Arizona Theatre Company, Syracuse Stage, ACT Theatre, Intiman Theatre, TAG, Village Theatre, Childsplay, Phoenix Theatre, Mixed Blood Theatre, Hey City Theater, and Prince Theater. He has been Resident Designer for Portland Opera, Opera Memphis, and Wildwood Park for the Arts, and has designed for Seattle Opera, Pittsburgh Opera, Vancouver Opera, the Spoleto Festival USA, the Beijing Music Festival, and Nearco Producciones in Spain. Carey is a graduate of Yale University and attended the Yale School of Drama. This is his 31st design for SCT.

**Catherine Hunt** (*Costume Designer*) is so thrilled to be back at Seattle Children's Theatre, and working again with Linda Hartzell. *The Lion, the Witch and the Wardrobe* is one of her favorite SCT shows. Other special SCT shows include *Chitty Chitty Bang Bang*, *James and the Giant Peach*, *Robin Hood*, *Goodnight Moon*, and *Pippi Longstocking*. Catherine has designed for Village Theatre, Seattle Repertory Theatre, ACT Theatre, Seattle Opera, Intiman Theatre, San Diego Repertory Theatre, and Hartford Stage. Catherine also designed costumes for the computer game Riven. She holds an MFA in Costume Design from UC, San Diego, and has been a guest lecturer at Cornish College of the Arts and UW. Catherine has won two Gregory Awards from Theatre of Puget Sound, as well as a Los Angeles Drama-Logue Award, and the San Diego Theatre Critics Circle Award. Catherine is a former National Endowment for the Arts/Theatre Communication Group design fellow.

**Rick Paulsen** (*Lighting Designer*) Rick is pleased to be revisiting this production at SCT after 12 years. Making his home in Seattle, he has designed more than 25 shows for SCT, including *The Red Badge of Courage*, *Sleeping Beauty*, *Pharaoh Serket and the Lost Stone of Fire*, *The True Confessions of Charlotte Doyle*, *Animal Farm*, *The Secret Garden*, *Addy: An American Girl Story*, *Hondu & Me*, and *The Wizard of Oz*. Last season he moved his lighting for *Goodnight Moon* to Young People's Theatre in Toronto. His lighting has been seen at every major theatre in Seattle and across the US over the past 35 years. Rick is a proud member and Trustee of United Scenic Artists Local USA 829. He is devoted to his wife Roberta and daughter Paige.

**Chris R. Walker** (*Sound Designer*) is very happy to be returning as Resident Sound Designer for SCT. In Seattle he has designed at Seattle Repertory Theatre, ACT, Intiman Theatre, and 5th Avenue Theatre. In California he's designed at The Old Globe, La Jolla Playhouse, the Mark Taper Forum, Geffen Playhouse, and ACT (San Francisco). He spent seven seasons as the Resident Designer at the American Repertory Theatre in Boston, designing over 40 productions. He has also designed in New York City, Houston, Philadelphia, Princeton, Providence, Chicago, Washington D.C. and Phoenix, as well as internationally in Singapore, Taiwan and

Moscow. Commercially he has designed for Intel, Harvard University, Starbucks, and PopCap Games. He holds a degree in Classical Piano performance from Cornish College of the Arts.

**Annett Mateo** (*Puppet Designer/Coach*) believes anything can be a puppet! She has made all kinds of puppets out of all kinds of materials for people, projects and theatres both locally and nationally. In her career as a professional puppet designer and builder she has built marionettes, Muppet type puppets, rod puppets, large body/costume style, modified Banraku, shadow and pretty much every other kind of puppet. She has attended the O'Neill Theatre conference for Puppetry a number of years and is in her fourteenth season as a puppet designer and builder for Seattle Children's Theatre. She has done custom requests, puppets for parades, theatre performances for adults and is a regular participant of regional puppet slams. You can view her puppets on Puppetlandia.com.

**Joyce Degenfelder** (*Wig Master*) Pleased to be making wigs with SCT, Joyce started with two summers at Pacific Conservatory of the Performing Arts, three seasons assisting in wigs at Oregon Shakespeare Festival, with off-season time at San Diego Opera. Starting with Seattle Repertory Theatre, Joyce has since worked for other area theatres, including ACT, Intiman Theatre, Book-It Repertory Theatre, Tacoma Actors Guild and Seattle Shakespeare Company, as well as Alaska Repertory Theatre, Milwaukee Repertory Theatre, and Dallas Opera. In 2003 Joyce became Hair and Makeup Designer for Seattle Opera, while continuing to create wigs for Pacific Northwest Ballet. Always happy to teach wig making, Joyce has taught at UW, DePaul University, Carnegie Mellon and Boston University. Joyce was thrilled to be the recipient of the 2014 Gregory A. Falls Sustained Achievement Award.

**Judith Shahn** (*Dialect Coach*) has been working with Seattle Children's Theatre on and off for 30 years. In the 1980s, she began teaching young actors and directing Summer Season student productions. At SCT, Judith coached *Brooklyn Bridge*, *Dick Whittington and His Cat*, and *The Hundred Dresses*. She regularly coaches at Seattle Repertory and has coached at most of the Seattle area theatres. She just retired from UW's Professional Actor Training Program after 26 years, and now is

**UCDS**  
Igniting a renaissance  
in education.

**Call today  
for a school  
tour.**

pre-K to 5th grade  
ucds.org  
206-547-8237



# FAMILY CONCERTS

CLASSICAL KING FM CONCERTS CLASSICAL  
KING FM 98.1

**Create lasting family memories!**

LEMONY SNICKET  
**THE COMPOSER  
IS DEAD**  
October 22

ROB KAPILOW  
**THE POLAR  
EXPRESS**  
December 3

DR SEUSS  
**GREEN EGGS  
& HAM**  
March 4

**THE LISTENER**  
Featuring  
MAGIC CIRCLE MIME  
May 6

**206.215.4747 | SEATTLESYMPHONY.ORG**

## Inspiring education



At King's we seek not only to provide students with an exemplary education, but also to help them grow in faith and embrace virtues that will prepare them for life.

*Now offering Spanish Immersion for Kindergarten*



[www.kingsschools.org](http://www.kingsschools.org)

206-289-7783

Shoreline, WA | Preschool – High School



## SUPER SQUASH SCAVENGER HUNT

OCTOBER 1 - NOVEMBER 1

Make us part of your autumn tradition. Come explore our 150-acres on Bainbridge Island.

[www.bloedelreserve.org](http://www.bloedelreserve.org)  
206.842.7631

## Artistic & Production

taking her skills to business professionals and lawyers at Vibrant Speaking.

**Shellie Stone** (*Stage Manager*) credits include: *Chitty Chitty Bang Bang*, *Goodnight Moon*, *Mwindo*, *The Wizard of Oz*, *Lyle the Crocodile* (SCT); *Grease*, *A Chorus Line*, *Oliver!*, *Secondhand Lions*, *The Music Man*, *Rent*, *Cinderella* (5th Avenue Theatre); *The Vaudevillains*, *Who's Afraid of Virginia Woolf?*, *Venus in Fur*, *Boeing-Boeing*, *Clybourne Park*, *Red*, *The Imaginary Invalid*, *Birdie Blue*, *Twelfth Night* (Seattle Repertory Theatre); *La Cenerentola* (Spoleto Festival USA); *The Lion in Winter*, *A Midsummer Night's Dream*, *Romeo and Juliet* (Shakespeare Santa Cruz); *Amelia*, *Don Quixote* (Seattle Opera). Rachael Dorman (Assistant Stage Manager) is thrilled to be back at Seattle Children's Theatre this holiday season.

Other shows at SCT include *Chitty Chitty Bang Bang*, *The Cat in the Hat*, *Harold and the Purple Crayon* and *The Borrowers*. Most recently she was the ASM on the 5th Avenue Theatre's co-production of *Paint Your Wagon* with the Ordway Theatre. As an ASM at the 5th Avenue Theatre: *Carousel*, *A Christmas Story*, *A Chorus Line*, and *The Pirates of Penzance*. Shows at the 5th as a Production Assistant include: *Grease*, *Jasper in Deadland*, *A Room with a View*, *Spamalot*, *Oliver!*, *Secondhand Lions*, *The Music Man*, *ELF – The Musical* and *Cinderella*. Other regional credits include: Seattle Repertory Theatre and Taproot Theatre. Much love to her family, friends, Kelly and Stuart.

**Rachael Dorman** (*Assistant Stage Manager*) is thrilled to be back at Seattle Children's Theatre this holiday season. Other shows at SCT include *Chitty Chitty Bang Bang*, *The Cat in the Hat*, *Harold and the Purple Crayon* and *The Borrowers*. Most recently she was the ASM on the 5th Avenue Theatre's co-production of *Paint Your Wagon* with the Ordway Theatre. As an ASM at the 5th Avenue Theatre: *Carousel*, *A Christmas Story*, *A Chorus Line*, and *The Pirates of Penzance*. Shows at the 5th Ave. Theatre as a PA include: *Grease*, *Jasper in Deadland*, *A Room with a View*, *Spamalot*, *Oliver!*, *Secondhand Lions*, *The Music Man*, *ELF – The Musical* and *Cinderella*. Other regional credits include: Seattle Repertory Theatre and Taproot Theatre. Much love to her family, friends, Kelly and Stuart.

**Adrienne Mendoza** (*Production Assistant*) couldn't be happier to be back at SCT!

Recent stage management credits include *The Glass Menagerie* (The Williams Project) and *Orpheus Descending* (Intiman Theatre/The Williams Project); recent assistant stage management credits include: *Rising Star Project: How to Succeed in Business...* (5th Avenue Theatre) and *The Children's Hour* (Intiman Theatre). Recent production assistant credits include *How to Succeed in Business...*, *A Night With Janis Joplin*, and *Paint Your Wagon* (5th Avenue Theatre); *Jacques Brel is Alive and Well and Living in Paris* (ACT); *Angels in America* (Intiman Theatre); *Chitty Chitty Bang Bang*, *Mwindo*, and *Art Dog* (Seattle Children's Theatre). Her love to Shellie, Rachael, and, most of all, Sam.

## For SCT

**Courtney Sale** (*Artistic Director*) joined SCT as AD in August 2016. Previously, she served three years as Associate AD at Indiana Repertory Theatre (IRT). IRT directing credits include *Jackie and Me*, *The Giver*, *And Then They Came for Me: Remembering the World of Anne Frank*, *The Mousetrap*, *The Mountaintop*, and two iterations of *A Christmas Carol*. As a director, Courtney has developed plays with New Plays for Young Audiences at NYU/Provincetown Playhouse, Children's Theatre of Charlotte, Write Now, Dorset Theatre Festival, Denver Center Theatre Company's New Play Summit, New Harmony Project, and the Orchard Project. Her playwright/director collaborations include the works of Steven Dietz, Allison Gregory, Sherry Kramer, MJ Kaufman, Kirk Lynn, Jason Gray Platt, and James Still. Select awards include Indianapolis 40 Under 40, Austin Critic's Table Award and UT Austin Continuing Fellowship. Courtney has taught at IRT Summer Conservatory for Youth, Summer at Cornish, Temple College and University of Texas at Austin. BFA, Cornish College of the Arts. MFA, University of Texas at Austin.

**Karen Sharp** (*Managing Director*) is responsible for administration, management, operations and finances at SCT. In addition, Karen has taught and coordinated arts education programs for over 20 years, including several years as a drama specialist in a public elementary school. Karen began teaching for Seattle Children's Theatre in

# Special Thanks

1999 and has taught classes for students ages 3 through 21, in addition to training classroom teachers in how to integrate drama into core curriculum areas. In 2000 Karen joined the SCT staff, beginning her tenure as the Education Outreach Coordinator, later serving as Drama School Director, and from 2005-2015, as Education Director, where she oversaw Drama School and Outreach programs, and was responsible for spearheading the educational vision for SCT. Karen is also an adjunct faculty member for the Seattle University MFA arts leadership program, Teaching Artist Training Lab, Bringing Theatre into the Classroom, has taught at Cornish College of the Arts, and has collaborated with Shakespeare Center of Los Angeles to develop a creative drama performance piece. Karen has been an arts education guest lecturer at the University of Washington, Western Washington University, DePaul University, San Diego State University, and Pacific Lutheran University. She has consulted with art schools and theater education departments across the country to help them implement best practices at their institutions. Karen is a graduate of the Goodman School of Drama. She has presented at several local and national conferences, including the 2011 and 2013 One Theatre World conference, 2012 AATE Theatre in Our Schools regional conference, and the 2013 and 2015 AATE national conference. Karen has served on the Seattle School District Arts Representative Advisory Committee, is the Immediate Past President of TYA/USA and the current Board President of the Winifred Ward Scholarship Foundation.

**Mike Hase** (*Technical Director*) For the past 22 seasons, I have had the greatest of pleasures working with Sue Brekke and Linda Hartzell. These wonderful members of our SCT family have retired this year. My deepest respect, adoration, appreciation, gratitude and love go out to them as their contributions over the years to this organization, to this family and to myself cannot be quantified.

**Michael Wellborn** (*Production Manager*) is in his 10th season working with the amazing staff and guest artists at SCT. Prior to joining SCT, Michael was on the faculty of the University of Washington Dance Program. As a lighting designer for over 35 years, his work has appeared in, or has toured, the US, Egypt, Germany, the Netherlands, and Singapore, and has been seen in 25 productions here at SCT.

## 5<sup>th</sup> Avenue Theatre

## ACT Theatre

## Seattle Opera

## Seattle Pacific University Performing Arts

## Seattle Repertory Theatre

## University of Washington School of Drama

## Village Theatre



ACTORS' EQUITY ASSOCIATION, founded in 1913, is the U.S. labor union that represents more than 50,000 professional actors and stage managers. Equity endeavors to advance the careers of its members by negotiating wages, working conditions and providing a wide range of benefits (health and pension included). Member: AFL-CIO, FIA. #EquityWorks.



The Director is a member of the Stage Directors and Choreographers Society, an independent national labor union.



Seattle Children's Theatre is a member of TYA/USA, the national center of the International Association of Theatre for Children and Young People.



SCT is a constituent of Theatre Communications Group (TCG), the national service organization for the nonprofit professional theatre.



SCT is a member of International Performing Arts for Youth (IPAY).



Lighting, Sound, Staging, Property, Scenery, Scenic Art and Costume work is performed by employees represented by the International Alliance of Theatrical Stage Employees, Moving Picture Technicians, Artists, and Allied Crafts of the US and Canada, AFL-CIO, CLC.



The designers at this theatre are represented by United Scenic Artists Local USA 829 of the International Alliance of Theatrical Stage Employees.

## 2016-2017 Season Sponsors

ARTSFUND 

 Microsoft

THE SHUBERT  
FOUNDATION INC.

## Thank you!

Seattle Children's Theatre is very proud to partner with these organizations in bringing the theatre arts to life for our young audiences and our community.



BILL & MELINDA  
GATES foundation



 The Sheri and Les  
BILLER FAMILY FOUNDATION

Safeco Insurance<sup>TM</sup>  
A Liberty Mutual Company

The Norcliffe Foundation  
Keith and Mary Kay McCaw  
Family Foundation  
Moccasin Lake Foundation  
Satterberg Foundation

## Government Partners



OFFICE OF ARTS & CULTURE  
SEATTLE



CULTURE  
KING COUNTY LIBRARY TRUST



arts.wa.gov



art.gov

## Media Partner



## Special Thanks

 Mangetout Catering  
Complete Event Planning INC.

 encoreartsseattle.com

Cover illustration by  
Travis Jaworski

## A Message from Show Sponsor



Kibble & Prentice

USI Kibble & Prentice welcomes you to *The Lion, The Witch and The Wardrobe*. We are honored to sponsor SCT's opening fall production.

An exciting element of live theatre is sometimes risk – and learning important lessons while taking risks. Every hero and heroine takes a chance with new experiences, while achieving their goals – that's the drama. Risk makes story and life meaningful. As an insurance brokerage and risk management consultant, Kibble & Prentice has been supporting important stories and innovation for nearly 45 years. Through our strategic business partnerships, leadership, support and dedication to volunteer work, we are committed to strengthening and advancing the goals of our communities.

Seattle is tremendously fortunate to have one of the nation's leading professional theatres for young audiences here in our region, especially one so devoted to reimagining classics like *The Lion, The Witch and The Wardrobe*. Kibble & Prentice is proud to sponsor Seattle Children's Theatre in their mission to provide children of all ages with access to professional theatre. Providing children with magical and inspiring stories today gives us a greater hope for tomorrow, and thanks to SCT, we are certain to have a glorious future.

We hope you enjoy the show, and wish you all the best of the holiday season.

**Chris Prentice**

CEO

USI Kibble & Prentice



**THE DISNEY FAVORITE COMES TO LIFE!**

### DISNEY'S THE LITTLE MERMAID

**NOV 23 – DEC 31, 2016**

This holiday season, join us "Under the Sea" for this spectacular production of the Broadway musical, *Disney's The Little Mermaid*. Headstrong Ariel is no longer content to live on the ocean floor under her father, King Triton's, rule. Convinced she'll only find happiness on land, she sets off to find a world where she belongs, battling a sea witch and finding true love along the way.



**A CLASSIC REVIVED AND REIMAGINED**

### THE SECRET GARDEN

**APRIL 14 – MAY 6, 2017**

Based on the beloved children's novel, this mesmerizing musical follows recently orphaned ten-year-old Mary Lennox, who is sent to live with her reclusive uncle in a crumbling mansion on the Yorkshire moors. When she discovers the key to a neglected garden, Mary unearths renewed spirit that brings the estate's occupants back to exuberant life with the full force of spring.



**THE 5TH AVENUE THEATRE – SEATTLE'S HOME FOR MUSICAL THEATER!**

**(206) 625-1900 [WWW.5THAVENUE.ORG](http://WWW.5THAVENUE.ORG)**

GROUPS OF 10 OR MORE CALL 1-888-625-1418 | ON 5TH AVENUE IN DOWNTOWN SEATTLE

2016/17 SEASON SPONSORS

ARTSFUND 

**usbank**

*Alaska*  
AIRLINES

# SAVING THE CHILDREN:

## The real-world history behind *The Lion, the Witch and the Wardrobe*

England, 1939—News of the Nazi invasion of Poland on the first of September, and its subsequent occupation before the month was over, hit the British people hard. Hitler's army would go on to conquer Denmark, Norway, The Netherlands, Belgium, Luxembourg, France, Yugoslavia, Greece, most of Russia and almost all of North Africa. They

*“The greatest organized movement of a human population in the world’s history...”*

would systematically murder approximately 11 million victims who did not fit into what Hitler believed would be a thousand-year “Reich,” or kingdom. Hitler’s Luftwaffe, or air force, attacked across the seas and mountains, distances that had formerly kept Britain’s people feeling safe. Britain, struggling to protect her children from air attacks on London and major industrial areas, evacuated them to the countryside and as far away as Canada, Australia and the United States. As the London newspaper The Daily Mail reported on September 3, 1939:

*The greatest organized movement of a human population in the world’s history started yesterday. Nearly 1,000,000 children were taken from danger across the invisible frontier to safety. Thousands of households all over Britain yesterday welcomed small strangers who were to be for a time members of the family... All over London boys and girls made their way to their schools for the great adventure. Each had a*



*label tied to the coat, and was given a gas mask and a supply of food for the journey... By tens, hundreds, thousands, tens of thousands, hundreds of thousands, the children started off to their unknown destinations. From every school filed a procession of boys and girls, each led by a master or other official wearing an armband. They filed through the streets to an underground railway station, where they took their places in an empty train, which set off at once.*

As it turned out, crossing the “invisible frontier to safety” was not so easy. Some of the air raid shelters in Britain turned out to be death traps when their concrete roofs collapsed on those taking refuge. Because the Nazi airplanes did not come as soon as expected, almost half of the 1,000,000 lonely and homesick children who had been evacuated returned to their urban homes. Soon after, Britain’s major cities faced the ferocious air attack, known as The Blitz (the German word for a flash of lightning), which reached its height in the summer of 1940. Also, on September 17, 1940, a German U-boat (submarine) sank an evacuation ship on the way to Canada, killing 77 children. That attack put an end to all civilian evacuations by ship. Though Britain avoided the catastrophic levels of suffering and death that came to so many nations during World War II, before it was over 60,000 civilians in Britain had been killed.

Read more at [www.sct.org/Assets/Files/AAG-TheLionTheWitchAndTheWardrobe.pdf](http://www.sct.org/Assets/Files/AAG-TheLionTheWitchAndTheWardrobe.pdf).



SATURDAY FAMILY CONCERTS

Where kids and their grown-ups get to rock out and make music together!

**Teacher Brandon**  
(10/22, 11am)

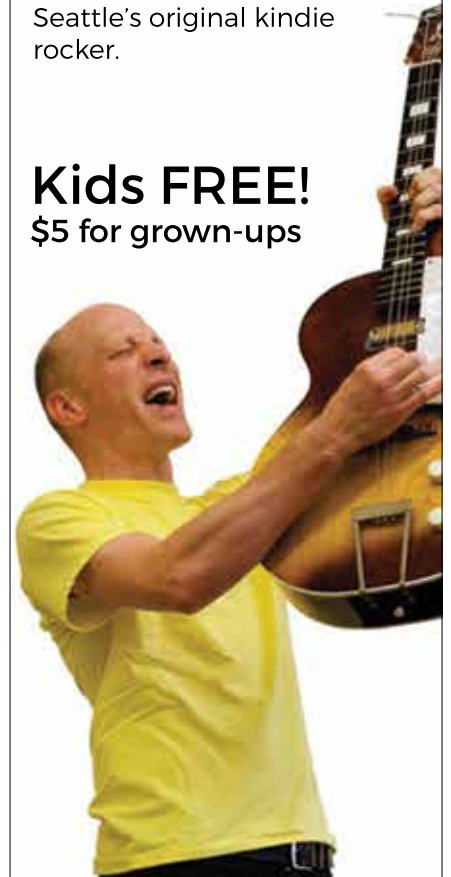
A one-man band, Brandon plays bass guitar, microphone, looper pedal, and the Hokema Sansula thumb piano.

Next up:

**Caspar Babypants**  
(11/19 & 11/20)  
10:30am & 12:30pm

Seattle’s original kindie rocker.

**Kids FREE!**  
\$5 for grown-ups



TOWNHALLSEATTLE.ORG

PACIFIC NORTHWEST BALLET

“...like a stocking hung by the hearth, filled with treasures.”

—The Seattle Times

GEORGE BALANCHINE'S THE  
**NUTCRACKER**®

TITLE SPONSOR

**Alaska**  
AIRLINES

MUSIC **PETER ILYICH TCHAIKOVSKY**

DESIGN **IAN FALCONER**

**NOVEMBER 25 – DECEMBER 28**

ONLY AT SEATTLE CENTER'S MCCA W HALL



Company Dancers in George Balanchine's The Nutcracker®, choreography by George Balanchine,  
© The George Balanchine Trust. (Upper) © Angela Sterling; (lower) © Elise Bakketun.

**PNB.ORG 206.441.2424**

MAJOR SPONSOR  
**SNOQUALMIE  
INDIAN TRIBE**

STAR SPONSOR  
**CHIHULY  
STUDIO**

MEDIA SPONSORS

**KOMO 34**

**The Seattle Times**

SEASON SPONSORS

**Microsoft**

**ARTS FUND**

**PNB** **Peter Boal**  
Artistic Director

# SCT Individual Donors

Seattle Children's Theatre recognizes the generosity of the following individuals that have contributed to our Annual Fund, Gala Raise the Paddle, or Education programs in the last twelve months. These contributions were received between March 1, 2015 and March 18, 2016 and have allowed SCT to continue changing the lives of thousands of children and families in our region by creating access to the world of live theatre and arts education.

To learn more or to make your tax-deductible donation, please visit [www.sct.org/support](http://www.sct.org/support) or call 206.859.4008.

*"SCT is a unique gift to Seattle and the surrounding areas. The quality of the productions and the spirit with which they are carried out are truly outstanding. We want as many kids as possible to be inspired by the work of SCT."*

## **Benefactor's Circle** **\$100,000 and more**

Anonymous  
Eve and Chap Alvord  
Mary Pigott

## **Playwright's Circle** **\$50,000 - \$99,999**

Karyl and Elias Alvord  
Connie and Steve Ballmer

## **PRODUCER'S CIRCLE** **\$20,000 - \$49,999**

Marilyn Dillard  
Bob Evans and Steve Davis  
Laura and Michael Larson  
Zoey and Jordan Minkove  
Charles and Eleanor Nolan  
Laurie and Scott Oki  
Betsy and Mario Ribera  
Sally Sykes-Wylie

## **Artist's Circle** **\$10,000 - \$19,999**

Aiko Bethea  
Lara and Peter Constable  
Cynthia Foster  
Richard Herzberg, Ph.D. and Marilyn Herzberg  
Joy Thal and Chai Mann  
Louise Pietrafesa and Anna Kaminski  
Laura and Jim Smith  
Douglas and Janet True

## **Patrons** **\$5,000 - \$9,999**

Anonymous  
Rene Alkoff  
Ashley Andrew and Adam Crowley  
Perry and Christine Atkins  
Joe and Karyn Barer  
Jeanne Beauregard and Marc Stolzman  
Jennifer and Matt Berger  
Heather and Ed Blahous  
Jonathan and Bobbe Bridge  
Kelly Cole and Jon Tinter  
Lisa and Terry Davenport  
Allan and Nora Davis  
Alice and Ace Forsythe  
Stacie Foster and Lawrence Cock  
Tiffany Gilbert and Ken Efta  
Masha and Glenn Hart  
Pat and Mary Ellen Hughes  
Ruth and William Ingham  
Linda and Ted Johnson

Matt and Celina Kochel  
David Landau and Tanya Brunner  
Natalie and Keith Matthews  
James and Amy Mitchell  
Susan and Jim Palm  
Andrew and Carin Parcel  
The Perazzoli Family  
Carrie Rhodes  
Kerry Richards and Jan Arntz  
Ilene and Steven Ruhoy  
Scott and Danielle Ruthfield  
Martin Selig  
Laura and Adam Selipsky  
Katy and Matt Tonkin  
Dustin and Stephanie True  
Wanda Wong and Mark Masterson

## **Distinguished Champions** **\$2,500 - \$4,999**

Shari Bitcon and Paul Donnelly  
Ryan and Danielle Boone  
Kendall and Jay Cammermeyer  
Corry and Mike Clayville  
Marie Farrelly and Jeremy Griffin  
Mimi Gan and Everett Billingslea  
Deborah and Dave Grant  
Robert and Robyn Grant  
Adam and Quyen Hamilton  
Alison and Michael Harris  
Karin Jones  
Barb Larimer and Bob Royer  
Susan Leavitt and Bill Block  
John and Lauren McGuire  
Mimi and Todd Menenberg  
Molly and Blake Nordstrom  
Tom Ohaus and Linda Mae Kristofik  
Alexander Oki  
Sam Pailca  
Zach Pauw and Alison Balcom  
Bill and Teresa Predmore  
Brooks and Suzanne Ragen  
Nicolas and Elizabeth Richardson  
Lee-Norah Sanzo  
Charles and Lisa Simonyi  
Warren and Nancy Smith  
Mark Wesley and Eileen Glasser Wesley

## **Champions** **\$1,000 - \$2,499**

Allan and Anne Affleck  
David and Mary Alhadeff  
Suzanne Allen  
April and Jim Allison  
Eli and Rebecca Almo  
Nancy Alvord  
Russ and Jean Amick

Virginia Anderson  
Susan and Charles Armstrong  
In Memory of Paul Bartelmes  
Shari and John Behnke  
Kenneth and Jan Block  
Lisa and Norm Bontje  
Sandra and Kent Carlson  
Jennifer and Phil Carter  
Barbara and Ken Christoferson  
Kimberly and Peter Cleworth  
Polly Close and Mark Bolender  
Kirk and Deborah Clothier  
Donna Cochener  
Rachelle Cohen  
James and Barbara Crutcher  
Helen Curtis  
Terrence and AnnaLisa Danysh  
Cecile and J.D. Delafield  
Priscilla Dickert  
Eric and Holly Dillon  
Mindy and Steve Dodobara  
Durga Doraisamy and Tom DeBoer  
Nancy Elliott  
Shelly and Brent Evans  
Matt and Amy Eyler  
Drew Fillipo and Susan Griffith  
Rebecca and Chad Fischer  
Don and Libby Fleming  
Leslie Foley  
Lynda Fredrickson  
Carmen and Carver Gayton  
Sean and Bernie Griffin  
Linda Hartzell and Mark Perry  
Caroline and Pete Hauge  
Sharon Hazzard and Dan Laster  
Jay Hereford and Margaret Winsor  
Wanda Herndon  
Gaye and Lisa Hewson  
Ann and Glen Hiner  
Kristen Hoehler and Spencer Curtis  
Susan Trainor and John Holt  
Melinda and Bob Hord  
Joan Hsiao-Bromley and James Bromley  
Jane and Randall Hummer  
Jenny Hurst  
Tami Hurwitz  
William and Patricia Jandl  
Brent and Catherine Johnson  
Cassandra and Tom Johnston  
Mimi and Edward Kirsch  
Rosanne Lapan  
Barbara and Edmond Lee  
Thomas Lennon and Patricia Keegan

Dan and Stacey Levitan  
Jackie and Peter Mansfield  
Paul and Yaffa Maritz  
Sally and Dean Martin  
Cheryl McQuiston  
Erika Michael  
Mina Miller and David Sabritt  
Stuart Needleman  
Valorie and Larry Osterman  
Kimberly A. Parris  
Kerry Perlman and Mark Donner  
Olivia Polius  
Eleanor and Charles Pollnow  
Dinny and Alex Polson  
Patricia Powers  
Caroline and Brad Probst  
Amy and Matthew Ragen  
Ann Ramsay-Jenkins  
Molly and Richard Reed  
Dan and Cecelia Regis  
Jennifer Reichert  
Liliana Retelney  
Steven and Fredrica Rice  
Thurston and Catherine Roach  
Doug and Debbie Rosen  
Judy and Kermit Rosen  
Cathy Sarkowsky  
Faye Sarkowsky  
Petra Schindler-Carter and Dean Carter  
Robert Schoenfeld  
Howard Schultz  
Jenny and Ty Schultz  
Karen and Dale Sharp  
Mark Sherman and Jennifer Daves  
Heather Shilling and Patrick Gearing  
Jonas Simonis and Jillian Barron  
Catherine and David Skinner  
Colette Stallbaumer  
Jen Steele and Jon Hockstra  
Annie Thenell and Doug Moll  
Leigh Toner and Chris Capossela  
Shirley and David Urdal  
Melissa Valdez O'Connor and Sean O'Connor  
Tonica and Rodger Voorhies  
Todd Waddell  
Deidra Wager  
Julie and David Ward  
Anna White and Cliff Burrows  
Christine and Bryan White  
Alexander Williams Miller  
Shannon Williams  
Rosemary and Kenneth Willman

The accuracy of this list is important to us. We welcome notifications of recognition corrections or unintended omissions. Please contact [eroh@sct.org](mailto:eroh@sct.org) or 206.859.4008.

# Special Thanks

On May 16, 2016, our community raised over \$500,000 for the School Children Access Program, which ensures that we can continue to provide free and discounted tickets to students and teachers this season. Thank you to these companies and individuals for their extraordinary partnership in making SCT's Onstage Gala 2016 a huge success!



Choice Linens



THE OKI FOUNDATION

Alabastro Photography

Eve and Chap Alvord

MarQueen Hotel

MOD Pizza

Nick Perry and Amanda Thornton

Nielsen's Pastries

The Pike Place Brewing Company

## Thank you to our Community Partners

Seattle Children's Theatre is pleased to acknowledge the generosity of all the corporations, foundations and government agencies that have supported SCT in the last year. The list below gratefully recognizes their contributions.

### SEASON SPONSORS

ARTSFUND



### CORPORATE & FOUNDATION GIFTS

#### \$50,000 & More

The Sheri and Les Biller Family Foundation  
The Boeing Company  
Keith and Mary Kay McCaw Family Foundation  
Moccasin Lake Foundation  
Satterberg Foundation

#### \$20,000 - \$49,999

Apex Foundation  
Expedia, Inc.  
Bill & Melinda Gates Foundation  
The Robert B. McMillen Foundation  
Charlotte Y. Martin Foundation  
Mangetout Catering (in-kind)  
Nesholm Family Foundation  
Norcliffe Foundation  
Ski's Painting (in-kind)  
The Oki Foundation  
The Seattle Foundation  
USI Kibble & Prentice  
Wells Fargo

#### \$10,000 - \$19,999

Brenda Brown-Lipitz Family Foundation  
Adrienne Coons Memorial Fund  
DCG ONE (in-kind)  
Harvest Foundation  
Kayne Foundation  
D.V. & Ida McEachern Charitable Trust  
Robert B. McMillen Foundation  
Snoqualmie Indian Tribe

#### \$5,000 - \$9,999

The Ahmanson Foundation  
Holland America Line  
Horizons Foundation  
Jubilation Foundation Fund  
MUFG Union Bank  
Nordstrom  
Umpqua Bank

#### \$2,500 - \$4,999

Fales Foundation  
Lake Partners Strategy Consultants

#### \$1,000 - \$2,499

The Baird Group  
John E. Manders Foundation  
Raven Foundation  
Strom Family Foundation  
Talking Rain Beverage Co. (in-kind)  
Tulalip Tribes Charitable Fund

### CORPORATE MATCHING GIFTS (All levels of giving)

Adobe  
Alaska Airlines  
Amgen  
Bank of America  
Bill & Melinda Gates Foundation  
Boeing  
Cambia Health  
COSTCO  
Dorsey and Whitney

Expedia  
General Electric  
Goldman, Sachs & Co.  
Google  
Jacobson, Jarvis & Co.  
Lake Partners Strategy Consultants  
Microsoft  
Nordstrom  
Outerwall

Phillips66  
Plum Creek  
Precor Inc.  
Puget Sound Energy  
R.W. Baird & Co.  
Russell Investment Group  
Starbucks Coffee Co.  
Tegna

## Government Support



For information about institutional opportunities to support SCT, please contact: Connie Moffit at 206-859-4043 or conniem@sct.org

# Just For Kids!

## DESIGNING A COAT OF ARMS

In medieval times, knights and royal families used symbols that made it easier for them to recognize each other during battles. Each knight and family had their own unique design, called a "coat of arms." The symbols and colors were chosen for qualities that represent the values in which they and their families believed.



This example is a coat of arms from a neighbor to the north, the territory of Nunavut, Canada. The motto, written in Inuit, means "Our Land, Our Strength."

*Design a coat of arms for one of the characters in Narnia or for yourself, using these elements in any way you wish:*

**Crest** - how you (or the character) are perceived, or wish to be perceived

**Supporters** - literal or symbolic creatures, people or objects that support you (or the character)

**Shield** - images that represent your (or the character's) true self

**Motto** - statement of carnal belief or goal

*Who's this coat of arms for?  
Why did you choose these images?  
Why did you choose these colors?*

Draw your coat of arms here...



# Seattle Children's Theatre Staff

**Courtney Sale** Artistic Director

**Karen Sharp** Managing Director

## ARTISTIC:

Rita Giomi  
Artistic Associate

## EDUCATION PROGRAMS:

Joanna Barnebey  
Education Finance and  
Operations Manager

Kate Chiappe  
Education Intern

Megan Collins  
Teaching Artist/Board Liaison

Chris Dewar  
Education Outreach and Faculty  
Development

Don Fleming  
Education Director

Andrea Ichikawa  
Education Specialist

Laura Knote  
Education Program Manager

Carly Mungovan  
Education Administrative  
Manager

## DEVELOPMENT & MARKETING:

Ariel Bradler  
Director of Sales & Marketing

Trick Danneker  
Member Services Coordinator

Emily DenBleyker  
Development Associate

Eron Huenefeld  
Annual Fund and Events  
Manager

Shayla Keating  
Graphic Designer

Jordan McMakin  
Marketing Coordinator

Connie Moffit  
Institutional Giving Manager

Brooke O'Neal  
Director of Development

Kanani Reichlin  
Sales & Database Manager

Paul Richter  
School Show Coordinator

Susan Schoenecker  
Lead Member Services Associate

Liisa Spink  
Capital Campaign Manager/  
Major Gifts Officer

Stephen de Tasnady  
Members Services Associate

## ADMINISTRATION:

Eric Bischoff  
IT Administrator

Riley Kimsey  
Business Office Associate

Sue McAllister  
Accounting and HR Manager

Patrick Schroeder  
Director of Finance

## PATRON SERVICES:

Kathryn Bolling  
Patron Services Associate

Stephanie Couturier  
House Manager

Kate Drummond  
Patron Services Associate

Aimee Filippi  
Patron Services Associate

Elizabeth Freebairn  
Patron Services Associate

Tammy Hase  
Volunteer Coordinator

Ashley Kortman  
Patron Services Associate

Grace Orr  
House Manager

Sarahann Rickner  
Patron Services Manager

Willa Schober  
Patron Services Associate

Zachary Taxdahl  
Patron Services Associate

Amanda Underwood  
Patron Services Associate

## PRODUCTION:

Nanette Acosta  
Costume Shop Manager

Tobias Cullins  
ASL Interpreter

Elizabeth A. Friedrich  
Properties Shop Manager

Alexis Garrigues  
Company Manager

Michael K. Hase  
Technical Director

Eric Koch  
Assistant Technical Director

JoAnna Smith  
ASL Interpreter

Beth Ellen Spencer  
Associate Production Manager

Chris R. Walker  
Resident Sound Designer

Michael Wellborn  
Production Manager

## BACKSTAGE CREW:

David Baldwin  
Stagehand

Craig Bradshaw  
Master Electrician

Kyle Easterly  
Sound Engineer

Michael White Hayes  
Lead Sound Engineer

Allysa Johns  
Lead Electrician

Nick Koester  
Lead Electrician

Nick Lauris  
Master Stage Carpenter

Emily McLaughlin  
Wardrobe Assistant

Mandy Mueller  
Lead Dresser

Erin Perona  
Wardrobe Master

Jackie Roberts  
Lead Stagehand

Desiree Stone  
Dresser

Joseph Swartz  
Master Sound Engineer

Alex Trewin  
Lead Stagehand

Julia Trimarco  
Dresser

## COSTUME SHOP:

Cora Brown  
First Hand

Kellie Dunn  
Crafts Master

Miriam Goodman-Miller  
Crafts Lead

Penny McMillan-Huges  
Stitcher

Shellie Moomey  
Master Draper

Michael Notestine  
Costume Assistant

Connie Rinchiuso  
First Hand

James Westerland  
Master Draper

## PROPERTIES SHOP:

Daphne Maurides  
Master Properties Artisan

Todd Peacock-Preston  
Lead Properties Artisan

## PUPPETRY SHOP:

Annett Mateo  
Master Puppet Artisan

## SCENIC SHOP:

Ashley Bailey  
Assistant Charge Artist

David Baldwin  
Scenic Carpenter

Jeffrey Cook  
Charge Scenic Artist

Brian "Chili" Culver  
Master Scenic Carpenter

Zach Danneker  
Scenic Carpenter

Clark Sandford  
Scenic Shop Foreman

## TEACHING ARTISTS

Geoffrey Alm

Hattie Andres

Lauren Appel

Dave Baldwin

Joanna Barnebey

Jeremy Behrens

Jeff Bell

Meredith Berlin

Britt Boyd

Eric Bradler

Ann Marie Caldwell

Keni Cohen

Andrew Coopman

Shelia Daniels

Kimberly Dare

Emuna David

Alban Dennis

Chris Dewar

Mercedes Diggs

Kate Drummond

Don Fleming

Duncan Frost

Eve Hammond

Lauryn Hochberg

Jeff Hogan

Faith Howes

Carly Hutchison

Andrea Ichikawa

Kate Jaeger

Ian Jagel

Eric Johnson

Gillian Jorgensen

Amy Jurkiewicz

Tara Kaine

Laura Knote

Scott Koh

Anita Kuroiwa

Annie Lareau

Chelsea LeValley

Rachael LeValley

Michael Loggins

Jessica Low

John Lynch

Rob Martin

Michael Massey

Andrew McMasters

Dana Mitchell

Lisa Moncur

Brandon Peck

Michael Place

Beth Pollack

Natasha Ransom

Kathryn Reed

Angela Rinaldi

Carol Roscoe

Jane Ryan

Karen Sharp

Therese Sloss

Emily Veling

Amber Lee Williams

Kate Wisniewski

Amber Wolfe

Matt Wolfe

## TEACHING APPRENTICES

Kate Chiappe

Steph Couturier

Biz Freebairn

James Lynch

Maia Nowack

Kendall Uyeji

Seattle Children's Theatre  
201 Thomas St. Seattle, WA 98109

## ADMINISTRATION

206.443.0807

## EDUCATION/DRAMA SCHOOL

209.443.0807 EXT. 1186

## DEVELOPMENT OFFICE

206.859.4007

## TICKET OFFICE

206.441.3322



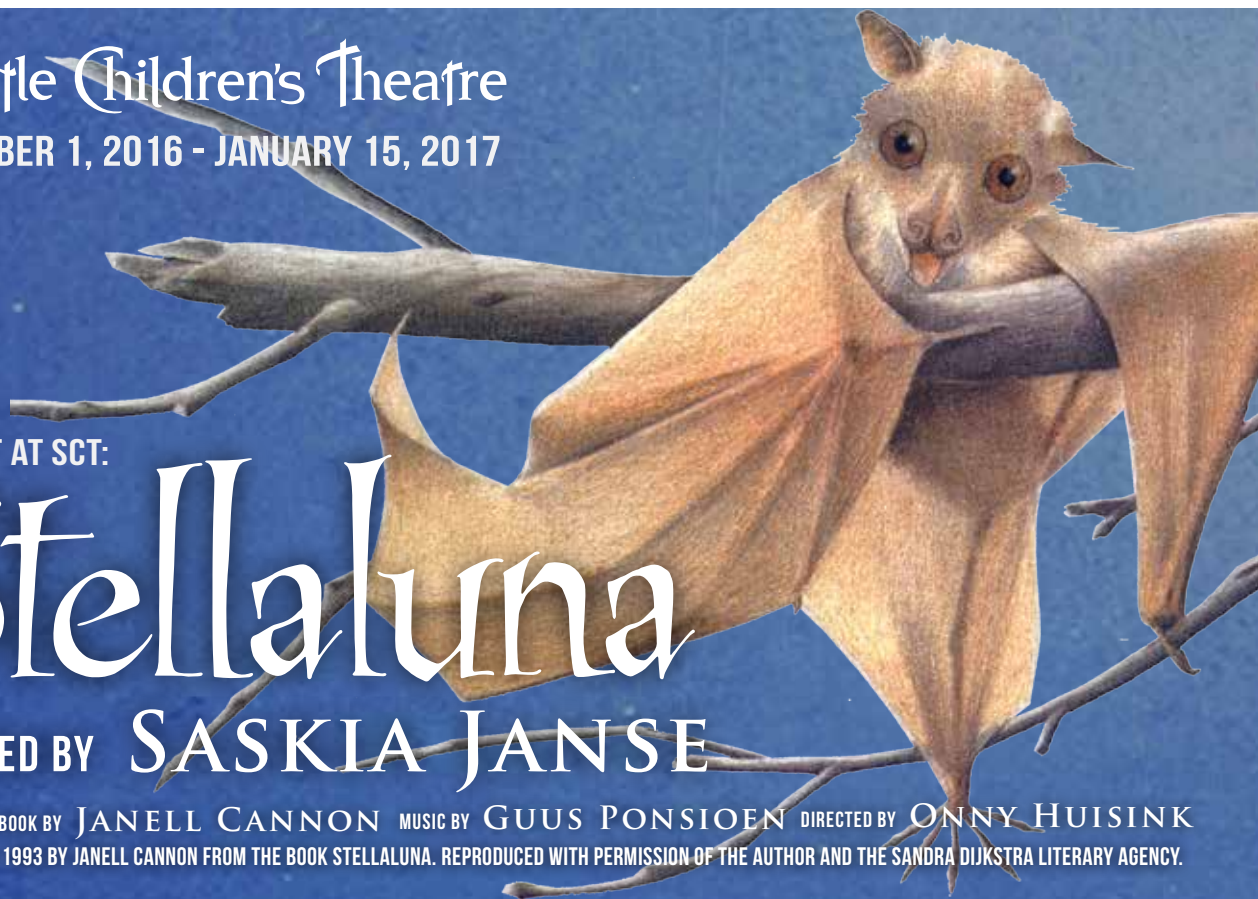
Seattle Children's Theatre  
DECEMBER 1, 2016 - JANUARY 15, 2017

UP NEXT AT SCT:

# Stellaluna

ADAPTED BY SASKIA JANSE

BASED ON THE BOOK BY JANELL CANNON MUSIC BY GUUS PONSIOEN DIRECTED BY ONNY HUISINK  
COPYRIGHT © 1993 BY JANELL CANNON FROM THE BOOK STELLALUNA. REPRODUCED WITH PERMISSION OF THE AUTHOR AND THE SANDRA DIJKSTRA LITERARY AGENCY.



## Seattle Children's Theatre Drama School

WE OFFER FULL DAY PROGRAMMING  
WHEN STUDENTS ARE OUT OF SCHOOL!

OCT. 1- DAY SEMINAR  
OCT. 14TH

NOV. CONFERENCES BREAK  
NOV. 21ST - 23RD

WINTER BREAK  
DEC. 19TH - 23RD &  
DEC. 26TH - 30TH

WWW.SCT.ORG/SCHOOL  
DRAMASCHOOL@SCT.ORG  
206.443.0807  
EXT. 1186





# My wealth. My priorities. My partner.

**You've spent your life accumulating wealth.** And, no doubt, that wealth now takes many forms, sits in many places, and is managed by many advisors. Unfortunately, that kind of fragmentation creates gaps that can hold your wealth back from its full potential. The Private Bank can help.

The Private Bank uses a proprietary approach called the LIFE Wealth Cycle<sup>SM</sup> to find those gaps—and help you achieve what is important to you.

**To learn more, contact:**

**Carolyn Stewart**  
**Vice President, Private Wealth Advisor**  
**206-587-4788**  
[carolyn.stewart@unionbank.com](mailto:carolyn.stewart@unionbank.com)  
or visit [unionbank.com/theprivatebank](http://unionbank.com/theprivatebank)



Wills, trusts, foundations, and wealth planning strategies have legal, tax, accounting, and other implications. Clients should consult a legal or tax advisor.

©2016 MUFG Union Bank, N.A. All rights reserved. Member FDIC. Union Bank is a registered trademark and brand name of MUFG Union Bank, N.A.