

# encore

JANUARY 2019

WWW.SCT.ORG

Seattle Children's Theatre  
2018-2019 SEASON

206.441.3322



## THE MIRACULOUS JOURNEY OF EDWARD TULANE

Produced by special arrangement with DRAMATIC PUBLISHING, Woodstock, Illinois

FROM THE BOOK BY **KATE DICAMILLO**  
ADAPTED BY **DWAYNE HARTFORD**

DIRECTED BY **COURTNEY SALE**

Share your reviews on social media using #SCTseattle



Arts Corps revolutionizes arts education by igniting the creative power of young people through culturally engaging learning experiences.

We have been providing arts learning opportunities to youth aged 5-19 in Seattle and beyond since 2000.

Help fuel creative breakthroughs and join us at

# La Festa del Arte

**MARCH 22, 6-11PM  
FREMONT STUDIOS**

Tickets at  
[bit.ly/FestaBreakthrough](https://bit.ly/FestaBreakthrough)

Learn more at [arts Corps.org](https://arts Corps.org)



**BR  
EAK  
THRO  
UGH**



# THE MIRACULOUS JOURNEY OF EDWARD TULANE

Produced by special arrangement with DRAMATIC PUBLISHING, Woodstock, Illinois

FROM THE BOOK BY **KATE DICAMILLO**

ADAPTED BY **DWAYNE HARTFORD**

DIRECTED BY **COURTNEY SALE**

## THE CAST

Kalia Estes	<i>Abilene</i>
Zoe Papadakis	<i>Abilene</i>
Lucas Oktay	<i>Bryce</i>
Esteban Ortiz-Villacorta	<i>Bryce</i>
Mika Kita Wellington	<i>Sarah Ruth</i>
Natalia Ortiz-Villacorta	<i>Sarah Ruth</i>
Lorenzo Roberts*	<i>The Man</i>
Porscha Shaw*	<i>The Woman</i>
Rafael Molina*	<i>The Musician</i>
Rhonda J. Soikowski*	<i>The Traveler</i>
Matthew Sythandone	U/S – The Man
Gloria Lee Alcalá	U/S – The Woman
Sara Glauser	U/S – The Musician
Casey Kitzman	U/S – The Traveler

## THE CREATIVE TEAM

Courtney Sale	Director
Jessica C. Bomball	Stage Manager
Kiera Krieg	Production Assistant
Anna Vraney	Intern Stage Manager
Amy Jurkiewicz	Youth Cast Supervisor
Carey Wong	Scenic Designer
Trevor Bowen	Costume Designer
Connie Yun	Lighting Designer
Robertson Witmer	Composer & Music Director
Angie Louise	Musician/Conductor (Feb. 26-Mar. 10)
Chris Walker	Sound Designer
Annett Mateo	Puppet Designer & Coach

*The Miraculous Journey of Edward Tulane* was originally commissioned developed and produced at Childsplay in Tempe, Ariz. David P. Sarr, artistic director; Steve Martin, Managing director.

**Show Sponsor: Donna Cochener and Family**

---

ARTSFUND 

 SHUBERT  
FOUNDATION

 BILL & MELINDA  
GATES FOUNDATION


 Microsoft



Cameras and video recorders may not be operated during the performance.

Seattle Children's Theatre is a professional company employing members of the Actor's Equity Association.

\* Indicates members of the Actors' Equity Association



**Bischofberger**  
*Violins* est. 1955

Professional  
 Repairs  
 Appraisals  
 & Sales

1314 E. John St.  
 Seattle, WA  
 206-324-3119  
 bvviolinsltd.com



## King's Schools

Where inspiration is as important as education.



kingsschools.org  
 206.289.7783

Preschool – High School • Shoreline, WA

January 2019  
 Volume 24, No. 4

## encore

arts programs

Paul Heppner  
*President*

Mike Hathaway  
*Senior Vice President*

Kajsa Puckett  
*Vice President, Sales & Marketing*

Genay Genereux  
*Accounting & Office Manager*

### Production

Susan Peterson  
*Vice President, Production*

Jennifer Sugden  
*Assistant Production Manager*

Ana Alvira, Stevie VanBronkhorst  
*Production Artists and Graphic Designers*

### Sales

Amelia Heppner, Marilyn Kallins, Terri Reed  
*San Francisco/Bay Area Account Executives*

Devin Bannon, Brianna Hansen, Ann Manning  
*Seattle Area Account Executives*

Carol Yip  
*Sales Coordinator*

### Marketing

Shaun Swick  
*Senior Designer & Digital Lead*

Ciara Caya  
*Marketing Coordinator*

### Encore Media Group

Corporate Office  
 425 North 85th Street  
 Seattle, WA 98103  
 p 800.308.2898 | 206.443.0445  
 f 206.443.1246  
 info@encoremediagroup.com  
 www.encoremediagroup.com

Encore Arts Programs and Encore Stages are published monthly by Encore Media Group to serve musical and theatrical events in the Puget Sound and San Francisco Bay Areas. All rights reserved. ©2018 Encore Media Group. Reproduction without written permission is prohibited.



# A NOTE FROM COURTNEY SALE

Dear Friends,

Welcome to the fourth show of our 44th season, *The Miraculous Journey of Edward Tulane*, adapted by Dwayne Hartford and based on the book by Kate DiCamillo. This beautiful story launches us into the New Year as we celebrate ideas of love, empathy, and connection.

For many years, I have been a super-fan of Kate DiCamillo's writing. Her stories hold qualities that I am on the hunt for as a theatre maker: invention, facility with language, supreme curiosity, and rich characters. Dwayne Hartford's adaptation ignites her spirited writing with bold theatricality and meaning. It has been an honor to spend weeks in rehearsal ruminating on these ideas with the cast. To share them with you, our audience, pleases me from hair-tip to toe follicle!

With this production, we welcome new collaborators on and behind the stage. Thank you to the tremendous cast and creative team for their generosity and artistry. Early in the process, I knew I wanted the creation of the play to be as expansive as the story's message. I love when we are able to lift up multiple layers in our storytelling and with *Tulane*, we are fortunate to incorporate live music composed by the wonderful Rob Witmer. Annett Mateo has enlivened playful and inspiring puppets for the story. The creativity of Trevor Bowen, Carey Wong, and Connie Yun round out this dream team. And we welcome six dynamic young actors to the SCT stage. Many of the young people you see today have been part of the SCT family for a long time through our Drama School and Education programs. We are overjoyed to collaborate with them on this production.

In the book DiCamillo writes, "Open your heart. Someone will come. Someone will come for you. But first you must open your heart." *The Miraculous Journey of Edward Tulane* asks us to stay open and ready for possibility. In this New Year, let us greet each other with that hope.

Happy 2019!  
Sincerely,



Artistic Director



 *Inspiring  
Gifted Students K-8*

**SEATTLE COUNTRY DAY SCHOOL**



**206-691-2625 seattlecountryday.org**

## SEASON SPONSOR MESSAGE



Seattle Children's Theatre and Microsoft share a passion for creativity, learning, and excellence. Year after year, Seattle Children's Theatre delivers high quality entertainment that captivates the imaginations of young people and their families, throughout the Pacific Northwest. That's why Microsoft Philanthropies is proud to sponsor the 2018-2019 Season.

Community involvement is an integral part of our culture at Microsoft. We support the work of local nonprofits and encourage employee investment and volunteerism. Our employees respond in an incredible way, volunteering thousands of hours and contributing more than \$60 million each year to local nonprofits, including Seattle Children's Theatre.

A thriving arts and cultural scene, a network of human services providers, and a world class education system are critical to the continued vitality and attractiveness of the Puget Sound region. Through partnerships with organizations such as Seattle Children's Theatre, we aim to create an environment where the arts will thrive for generations to come.

On behalf of Microsoft and our employees in the Puget Sound area, we thank Seattle Children's Theatre for enriching our community.

Enjoy the show!

**Mary Snapp**

Corporate Vice President  
Microsoft Philanthropies



# SYNOPSIS

---

*Be warned: this synopsis has spoilers.*

Based on Newbery-winner Kate DiCamillo's beloved book, *The Miraculous Journey of Edward Tulane* follows the story of a china rabbit, Edward, who finds friendship, himself, and his way home.

With his handmade silk suits, wide array of hats, and tiny gold pocket watch, Edward Tulane is the most exceptional toy in a young girl's room. An expensive gift from her grandmother, Abilene loves him, but Edward thinks only of himself and his finery. One night before a big family journey, Abilene's grandmother tells a story about a princess who, like Edward, shuns love. A witch transforms the princess into a warthog. The story ends badly for the princess, and after a private admonishment to Edward for his self-obsession, grandmother kisses Abilene good night.

The next day Abilene's family sets sail on an ocean liner. Two mischievous boys play catch with Edward and accidentally propel him over the rail and into the ocean. Edward, helpless and unable to move, sinks deeper and deeper to the ocean floor. He is trapped at the bottom of the ocean for many days. He wonders if this is how a china rabbit dies. During an intense storm, the ocean waters churn him up and he is captured in a fisherman's net. The fisherman takes him home to be a companion to his wife, Nellie. She takes great comfort in Edward and talks to him about her loneliness and loss. Her daughter, Lolly, appalled at how her mother's relationship to a toy rabbit looks to the townsfolk, grabs Edward and takes him to the town dump. He spends months there buried in garbage but is eventually discovered by a dog named Lucy and a traveler named Bull.

The three share many happy years together. They ride the rails and attempt to make a comfortable life with their limited means. Bull makes Edward simple clothes out of found objects. He tells Edward about the beloved family he had to leave behind to go in search of work, asking Edward to remember them in case he cannot get back home. Other travelers find relief by telling Edward their stories of family and longing. One night, a watchman finding Bull on the train berates and bullies him, telling him he will be thrown off at the next stop. But before Bull or Lucy can stop him, the watchman throws Edward off the moving train. He is alone again.

An old lady finds Edward, and deciding he would make a good scarecrow, ties him to a pole in her vegetable garden where the crows relentlessly



# SYNOPSIS CONTINUED

---

attack him. Bryce, a young boy working in the garden, rescues him. He brings Edward home and gives him to his sister Sarah Ruth who is in very ill health. That night their father returns home and wakes the children with questions about Edward. Bryce stands up for the gift to Sarah Ruth, and their father strikes him on the face. Edward sees their home life is not safe. As Edward spends time with Sarah Ruth, he feels a profound change come over him. He no longer laughs at the thought of love but begins to understand its power. He can feel his heart breaking as Sarah Ruth grows frailer. Too fragile to recover, Sarah Ruth passes away. Edward is devastated. Bryce and Edward journey to Memphis where they search for food and shelter. Bryce strings Edward like a marionette to make him dance, and they perform on the street to earn money. The two enter a diner to grab a bite to eat. When Bryce is unable to fully pay for his meal, the angry restaurant owner shatters Edward's china head into many pieces. Bryce makes a difficult sacrifice and gives him away to a doll maker to be repaired.

Edward, restored but determined to never feel the pain of lost love again, meets an old doll in the toy shop. She has incredible wisdom, having lived through a long journey of her own. She shares with Edward that part of her adventure was becoming a new person all along the way, and that loving takes courage. After Edward has spent many years sitting alone on a shelf, an adult Abilene happens to enter the shop looking for a doll for her daughter. The two recognize one another. Abilene's love for Edward opens his heart and renews his hope as they are happily reunited.

*Illustrations by Bagram Ibatoulline*

## THEATRE ETIQUETTE

---

**In order to make each SCT experience remarkable, we politely request the following:**

- Please completely turn off all electronic devices, or anything that makes noise, so as to not distract the patrons or actors from the amazing work taking place on stage.
- Photos with friends and family in the lobby areas are highly encouraged and we love it when you share photos on social media using #SCTseattle. However, taking photos or audio and video recording is strictly prohibited during a performance.
- If you have to use the restroom or exit the theatre during the performance, please exit the back of the theatre.
- If you have questions about your theatre experience, contact an SCT staff member located in the lobby.





## Say yes.

Say yes to hope.

Say yes to care for all kids in all communities.

To pioneering research.

To lifesaving immunotherapy.

To unlocking the mysteries of the developing brain—leading to better treatments.

Say yes to cures previously unimaginable.

Say yes to defying the impossible.

Now is the time. Seattle is the place.

Yes is the word.

See what your yes can do at [seattlechildrens.org/yes](https://seattlechildrens.org/yes)

**IT STARTS  
WITH  
YES**  
The Campaign For  
Seattle Children's



**Seattle Children's**<sup>®</sup>  
HOSPITAL • RESEARCH • FOUNDATION

# BOARD & COMMITTEES

---

## BOARD OF TRUSTEES

Aiko Bethea – *President*  
Laura Smith – *Vice President*  
Mimi Gan – *Secretary*  
Ryan Boone – *Treasurer*

Eve Alvord  
Jennifer Berger  
Shari Bitcon  
Heather Blahous  
Meghan Browne  
Laura Buckland  
Amy Chasanov  
Lara R. Constable  
Bob Evans  
Matt Eyer  
Marie T. Farrelly  
Kate Forsyth  
Alice Forsythe  
Stacie Foster  
Tiffany Gilbert  
Jerome Greene  
Karin Jones  
David Landau  
Barbara Larimer  
Natalie Matthews  
M.J. McDermott  
Anh Nguyen  
Eleanor C. Nolan  
Andrew Parcel  
Louise Pietrafesa  
Sally Rampersad  
Natasha Rivers  
Scott Ruthfield  
Lee-Norah Sanzo  
Stephanie True  
Jared Van Kirk  
Heather Wilde  
Wanda Wong

## SCT FOUNDATION BOARD

Richard Bendix – *Chair*  
Eve Alvord  
Aiko Bethea  
Ryan Boone  
Stacie Foster  
Mimi Gan  
Mimi Kirsch  
Kerry Richards  
Lee-Norah Sanzo  
Mig Schaaf  
Mark Sherman

## TEACHER ADVISORY COMMITTEE

Vaughan Amare  
Margaret Bradford  
Dr. Barbra Casey  
Kyla Crawford  
Chelle Downey-Magee  
Treneicia Gardner  
Jessica Gogolowicz  
Danise Heisey  
Jen Latvala  
Leo Lazo  
Ana Le'Thach  
Stephanie May  
Marilyn Mears  
German Moreno  
Gail Morris  
Urdene Rickard  
Elizabeth Stockton  
Melanie Struck  
Jahira Teague  
Dr. Rosa Villarreal  
Peter Martin Weschler  
Antonia Woods

# THE CREATIVE TEAM

## COURTNEY SALE (Director/Artistic Director)

Courtney Sale currently serves as the Artistic Director of Seattle Children's Theatre where she directed last season's *The Little Prince*. Up next, she will direct the world premiere of Steven Dietz's *The Ghost of Splinter Cove* at Children's Theatre of Charlotte and *Tiny Beautiful Things* at Seattle Repertory Theatre. Prior to SCT, she spent three years as Associate Artistic Director at Indiana Repertory Theatre, where directing credits include the world premiere of April 4, 1968: *Before We Forgot How to Dream* by James Still, *The Mountaintop*, *The Mousetrap*, *Jackie & Me*, *And Then They Came For Me*, *The Giver*, and two iterations of *A Christmas Carol*. Other credits include *The Cake*, *Wild Horses*, *Not Medea* (Contemporary American Theatre Festival), *Mr. Burns*, *A Post Electric Play*, *On Clover Road* (The Phoenix Theater), *Twelfth Night* and *The Tempest* (HART Theatre), and *Zen Prayers & Songs* (Fusebox), written and performed by Kirk Lynn. With the Duplicates, she has co-created *The Fictional Life of Historical Oddities*, *September Play*, *The Man with the Dancing Eyes*, and *The Poison Squad* (Austin Critics Award). She has developed new work at New Plays for Young Audiences at NYU/Province-

town Playhouse, Denver Center Theatre Company's Summit New Play Festival, The New Harmony Project, Write Now, and The Orchard Project. Other awards included Indianapolis Business Journal's Forty Under Forty Designation. She has taught at Summer at Cornish, Seattle Children's Museum, Temple College and the University of Texas at Austin. Ms. Sale holds a BFA from Cornish College of the Arts, and an MFA in Directing from the University of Texas at Austin.

## JESSICA C. BOMBALL (Stage Manager)

Jessica is thrilled to be returning to SCT having previously worked on *Wizard of Oz*. Regional credits include: *Mac Beth*, *The Great Leap*, *Pride & Prejudice*, *King Charles III*, *A Raisin in the Sun*, *Buyer & Cellar*, *Of Mice and Men*, *God of Carnage* (Seattle Repertory Theatre); *The Secret Garden*, *Rent*, *Disney's Aladdin*, and *A Christmas Story: The Musical* (The 5th Avenue Theatre); *A Christmas Carol*, *The Education of Randy Newman* (ACT Theatre); *Angels in America: Millennium Approaches*, and *Perestroika* (Intiman Theatre Festival); *As You Like It*, *The Tempest*, and *Twelfth Night* (Shakespeare Santa Cruz); *Much Ado About Nothing*, *Henry V*, and *Comedy of Errors* (Seattle Shakespeare Company).



Call today for  
a school tour.

206.547.8237  
UCDS.org



Learning Is A Process,  
Not A Product

# THE CREATIVE TEAM CONT'D

---

## KIERA KRIEG (Production Assistant)

Kiera is returning to SCT after having previously worked on *The Journal of Ben Uchida: Citizen 13559* and *FireStation 7*. Other local credits include: *In the Heights* (Seattle Repertory Theatre); *Aida* (Seattle Opera); *The Government Inspector* (Seattle Shakespeare Company); *Baskerville: A Sherlock Holmes Mystery*, and 2017's *Local Company* (Taproot Theatre Company). She has also worked in the Spokane/Coeur d'Alene area with Coeur d'Alene Summer Theatre and Opera Coeur d'Alene. Kiera is a graduate of Texas Christian University in Fort Worth.

## CAREY WONG (Scenic Designer)

Carey has designed 34 shows for SCT. He has also designed for the Seattle Rep, Berkeley Rep, Portland Center Stage, Arizona Theatre Company, Baltimore Center Stage, Syracuse Stage, ACT Theatre, Intiman, Village Theatre, Childsplay, Phoenix Theatre, Mixed Blood Theatre, Hey City Theater, and Prince Music Theater. Carey has been Resident Designer for Portland Opera, Opera Memphis, and Wildwood Park for the Arts, and has designed for Seattle Opera, Pittsburgh Opera, Vancouver Opera, the Spoleto Festival USA, the Macao and Beijing Music Festivals, and Nearco Producciones in Spain. He is the Artistic Advisor/Designer of the new Portland Chinatown Museum. Carey received his B.A. from Yale University, and thereafter attended Yale School of Drama.

## ANGIE LOUISE (Musician/Conductor)

Angie last appeared at SCT as Hattie the pink poodle in 2017's *Go, Dog. Go!* More at SCT: 2011's *Go, Dog. Go!* (again as Hattie); *Pero*. A singer, actress, writer and musician, Angie's appeared at The 5th Avenue Theatre (*Kost, Cabaret; Vi, Buddy; Electra, Gypsy*); Village Theatre (*Molly, Unsinkable Molly Brown; Sally, Cabaret; Rosalie, Carnival; Billie, Babes In Arms*), and regionally at Theatre Under The Stars (Houston); Ordway (St. Paul); and American Musical Theatre of San Jose. She's penned the songs and screenplays for two award-winning feature films and is a winner of the Academy of American Poets Prize. Angie is the longtime frontwoman and songwriter for *The Love Markets*, whose record releases include *Beauty Factory* and *World Of Your Dreams*. [www.angielouise.com](http://www.angielouise.com)

## TREVOR BOWEN (Costume Designer)

Trevor is proud and excited for his first production at SCT. Credits include: *I Come From Arizona, Last Stop on Market Street, Corduroy* (Children's Theatre Company); *Fellow Travelers* (Minnesota Opera); *Five Points, All is Calm*, (Theatre Latte Da); *Good Person of Szechuan, Electra, Pericles, Henry IV Part 1*, (Ten Thousand Things); *In The Heights* (Ordway Center for the Performing Arts); *Choir Boy, We Are Proud to Present...* (Guthrie); *Girl Shakes Loose* (Penumbra Theatre); *The Paper Dreams of Harry Chin* (History Theatre); *An Octoroon, Pussy Valley* (Mixed Blood Theater Company); *The Gospel of Lovingkindness*, (Pillsbury House); *Ragtime* (5th Ave Theatre); *Sweat* (Asolo Rep); *BLKS* (Steppenwolf); *Thirst, Welcome to Fear City, pen/man/ship*, (Contemporary American Theatre Festival).

## CONNIE YUN (Lighting Designer)

Connie is a freelance lighting designer for the stage and is based in Seattle, WA. She is pleased to be making her SCT design debut with *Edward Tulane*. Most recently, local designs include *The Turn of the Screw, Beatrice and Benedict*, and *An American Dream* for Seattle Opera, and *Skylight* for ACT. Other recent designs include *Cavalleria Rusticana/Pagliacci* for Madison Opera; *The Magic Flute* for Kentucky Opera, and *Orfeo ed Euridice* and *La Cenerentola* for Portland Opera. She has also designed for Seattle Repertory Theatre, On the Boards, Tacoma Opera, Pacific Musicworks, The Cabiri, Cornish College, Bellevue College, University of Puget Sound, San Francisco Conservatory of Music, Arizona Opera, Minnesota Opera, and Canadian Opera Company. Upcoming projects include *As One* and *La Finta Giardiniera* for Portland Opera.

## ANNETT MATEO (Puppet Designer & Coach)

Anything can be a puppet! Annett has made puppets out of all kinds of materials for people, projects, and theatres both locally and nationally. In her career as a professional puppet designer and builder she has built marionettes, Muppet type puppets, rod puppets, large body/costume style, modified Banraku, shadow, and pretty much every other kind of puppet. She has attended the O'Neill Theatre conference for Puppetry a number of years. She is thrilled to be working with Seattle Children's Theatre for her sixteenth season. She has done custom puppets, puppets for parades, corporate events, theatre performances for adults, and is a regular participant of regional puppet slams. You can view her work at [Puppetlandia.com](http://Puppetlandia.com).

## AMY JURKIEWICZ (Youth Cast Supervisor)

Amy is thrilled to be joining the team at one of her favorite places in Seattle! Previously, Amy has worked as a Child Supervisor on *Chitty Chitty Bang Bang* and *Brooklyn Bridge* at SCT, as well as productions at the 5th Avenue Theatre, Seattle Repertory Theatre, Village Theatre, Seattle Opera, and ACT Theatre. She holds a Masters degree in Theatre Education from the University of Northern Colorado and also works as a Teaching Artist specializing in Creative Drama.

## SPECIAL THANKS



Seattle Children's Theatre is a member of TTA/USA, the national center of the International Association of Theatre for Children and Young People.



SCT is a constituent of Theatre Communications Group (TCG), the national service organization for the nonprofit professional theatre.



SCT is a member of International Performing Arts for Youth (IPAY).



ACTORS' EQUITY ASSOCIATION, founded in 1913, is the U.S. labor union that represents more than 50,000 professional actors and stage managers. Equity endeavors to advance the careers of its members by negotiating wages, working conditions, and providing a wide range of benefits (health and pension included). Member: AFL-CIO, FIA. #EquityWorks.



Lighting, sound, staging, property, scenery, scenic art, and costume work is performed by employees represented by the International Alliance of Theatrical Stage Employees, Moving Picture Technicians, Artists, and Allied Crafts of the US and Canada, AFL-CIO, CLC.



The Director is a member of the Stage Directors and Choreographers society, a national theatrical labor union.



The designers at this theatre are represented by United Scenic Artists (Local USA 829) of the International Alliance of Theatrical Stage Employees.



## Dance Programs Galore!

# EVERGREEN CITY BALLET

# 2018 2019

## 25<sup>th</sup> Anniversary Season

\* Registration Now Open \*

## ADULT BALLET | JAZZ | FITNESS

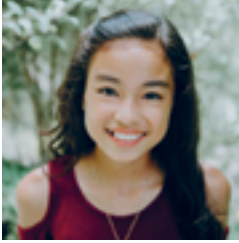
## MASTER CLASS SERIES

## BALLET SUMMER CAMPS & CLASSES

## INTENSIVE SUMMER SESSIONS

For more information,  
call **425.228.6800** or visit:

**[WWW.EVERGREENCITYBALLET.ORG](http://WWW.EVERGREENCITYBALLET.ORG)**



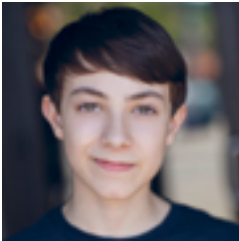
## **KALIA ESTES – Abilene**

13-year-old Kalia was excited to be in SCT's Summer Shows: *Lion King Jr.* (Lioness), and *Madagascar*, (Marty) but being in SCT's Mainstage, Edward Tulane is beyond rewarding. Kalia played Elizabeth Cratchit in ACT's *A Christmas Carol* in 2017 with her brother, Keagan, who played Tiny Tim, and was Ngana in *South Pacific* at SMT in 2016. She has been in several shows at Village Theatre Kidstage, but her ultimate favorite role was playing Oliver in 2017. Kalia is thankful to God for her abilities and to her family and friends for supporting her in all avenues of her life. "Someone will come for you but first you must open your heart." – EDWARD TULANE



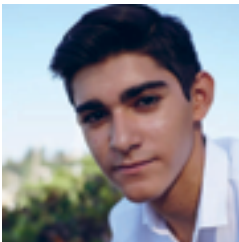
## **ZOE PAPADAKIS – Abilene**

Zoe is ecstatic to be playing Abilene in her first SCT Mainstage production! SCT Summer Season credits include: *Seussical Jr.* (Jojo) and *Mario and The Comet* (Pink Duck). Regional: *Annie* (Duffy/5th Avenue Theatre); *Jane Eyre* (Adele/Book-it Repertory Theatre); *It's a Wonderful Life* (Zuzu Bailey/Theater Anonymous); *The Best Christmas Pageant Ever* (Gladys/Seattle Public Theater); *Wait Until Dark* (Gloria/Edmonds Driftwood Players); and *The Brothers K* (Freddy/Book-it Repertory Theatre). Music credits: vocalist for "Echoes of the First Dreamer" (Highwire Games) and Disney's "It's a Small World" 50th anniversary video. A 12-year-old from Magnolia, Zoe has studied piano, performed with Seattle Girls Choir since age six, and recently joined Vocalpoint. Zoe thanks her many SCT educators, Tulane cast, and her family for bringing music and theater into her life!



## **LUCAS OKTAY – Bryce**

Lucas is thrilled to be back at SCT, after appearing in *Chitty Chitty Bang Bang* in 2015. Other regional favorites include: *The Music Man* at CDA Summer Theatre, *A Christmas Carol* at ACT, and *Shenandoah* at Showtunes. Film and television credits include: *The Librarians*, *Language Arts*, *The Parish*, *BizKid\$*, *The Son, the Father*, and *Haskell*. When not on stage or in front of the camera, Lucas can be found playing ultimate frisbee, hip hop dancing, or singing and playing guitar for the indie-pop band Nightloops. Love and high fives to the amazing cast & crew, Angela DiMarco & David Hogan, Jeannette d'Armand, Sam Picart, and Mom, Baba, Owen and Leo.



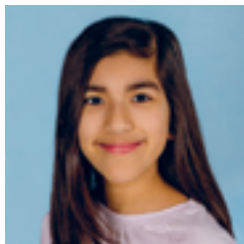
## **ESTEBAN ORTIZ-VILLACORTA – Bryce**

Esteban Ortiz is a high school sophomore who loves theatre as much as he loves writing, singing, and playing guitar with his rock band *Not Alone*. He has been acting since he was 10 years old and has participated in various SCT Summer Season productions: as Paul in *Rent*, Male in *Humor Games*, *A Parody*, and as Rapunzel's Prince in *Into the Woods Jr.* He has also appeared in professional productions such as Latino Theater Projects' *Mariela in the Desert* and Seattle Opera's *Katya Kabanova*. Esteban is excited to debut in his first SCT Mainstage play and would like to thank his family and friends for being so supportive throughout this process.



## **MIKA KITA WELLINGTON – Sarah Ruth**

Mika is 11 years old and thrilled to be appearing in her first professional production. She has enjoyed performing in SCT Summer Season the last three years, appearing in *Seussical Jr.*, *Madagascar Jr.* and *Lion King Jr.* She has also appeared in productions with Youth Theater Northwest and Broadway Bound. She is a member of the International Thespian Society and regularly sings The National Anthem at sporting events around the greater Seattle area. Mika also plays the cello, has taken up the ukulele, and loves to play volleyball. She has been inspired by this story to open wide our hearts and appreciate those people in our lives whom we love, and whom we miss. She sends a huge thanks to this incredible cast and crew.



### **NATALIA ORTIZ-VILLACORTA – Sarah Ruth**

Natalia is a 12-year old girl who loves theatre and music. She has appeared in the following Summer Season productions at SCT: *Through the Lookingglass* (Alice); *Mario and the Comet* (Mario); and *The Lion King* (Shenzi). She has also participated in the Village Theatre KIDSTAGE production of *Seussical* (Jojo). Currently in 7th grade, Natalia has studied at SCT's Drama School, plays piano, keeps working on her singing technique, and studies ballet at Pacific Northwest Ballet. She is delighted to be making her debut in a Mainstage production at SCT.



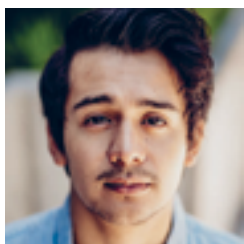
### **LORENZO ROBERTS\* – The Man**

Lorenzo holds a BFA in Acting from the University of North Carolina School of the Arts. Regional Credits: *Romeo and Juliet*, *Love's Labour's Lost* (Santa Cruz Shakespeare); *As You Like It* (Folger Shakespeare Theatre); *Julius Caesar*, *Pericles*, *Henry IV Part 1*, *Othello* (Seattle Shakespeare Company); *Dangerous Liaisons*, *The Royale*, *The Mystery of Love and Sex* (ACT Theatre); *Blues for Mr. Charlie* (The Williams Project). Lorenzo is a Core Company Member at ACT Theatre in Seattle.



### **PORSCHA SHAW\* – The Woman**

Porscha recently completed her 3rd year in the Professional Actor Training Program at the University of Washington. She is a native of Richmond, Texas, and a graduate of Santa Fe University of Art and Design where she majored in Drama under the training of Jon Jory. Her recent credits include: *And in this Corner: Cassius Clay*, *Richard III*, *By The Way*, *Meet Vera Stark*; Sound Theatre's *Hoodoo Love*, *As You Like It*; Anne Washburn's *The Octavia*, *Iphigenia* and *Other Daughters*; Wooden O's *Love's Labour's Lost*, and *Force Continuum*. Porscha is excited to start her next project with Seattle Children's Theatre!



### **RAFAEL MOLINA\* – The Musician**

Rafael is a performer, composer, and director. He is thrilled to be making his SCT debut! Recent stage credits include: *ZM* and *Into the Woods* (Village Theatre); *Much Ado About Nothing* (Seattle Shakespeare Company); and *Lydia* (Strawberry Theatre Workshop). As a composer and director, he has collaborated with Seattle Shakespeare Company, 18th and Union, Cornish College of the Arts, YPTMTC, and University of Washington, among others. Rafael received his BFA from Cornish College of the Arts.



### **RHONDA J. SOIKOWSKI\* – The Traveler**

Rhonda is an actor, director, and generative theater artist with an MFA in Contemporary Performance from Naropa University. As a teaching artist, she has worked locally with SCT's Young Actor Institute, Seattle Film Institute, Red Eagle Soaring, and is currently on faculty at Cornish College of the Arts. Soikowski is honored to be making her SCT performance debut in *The Miraculous Journey of Edward Tulane*. Local acting credits include work with Seattle Public Theater (*Christmastown: A Holiday Noir*); NCTC (*Bright Half Life*); Strawberry Theatre Workshop (*FROST/NIXON*, *Accidental Death of an Anarchist*); Book-It Repertory Theatre (*Little Women*, *Peter Pan*, *Pride & Prejudice*); Village Theatre (*Crimes of the Heart*); upstart crowd collective (*Titus Andronicus*); Cherry Manhattan Presents (*The Bebo Brinker Chronicles*), and many others.



### **ROBERTSON WITMER – Composer & Music Director**

Rob was seen last year onstage at SCT playing the accordion in *Go, Dog. Go!* Regionally, he has performed with Yale Rep, Berkeley Rep, Arizona Theatre Company, Childsplay, and Tantrum Theater. His recent sound design credits include *The Wolves*, *Skylight* (ACT Theatre); *Richard III*, *Bring Down the House*, (Seattle Shakespeare Company); *Matilda* (Village Theatre); *Ironbound*, *Hand to God* (Seattle Public Theater). His sound designs have also been heard at Seattle Rep, Spectrum Dance Theater, West of Lenin, and Teatro ZinZanni. Rob plays with several bands, including The Love Markets and the Toucans steel drum band.



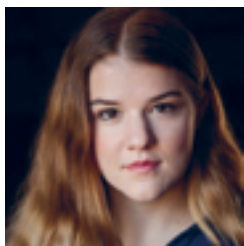
### **MATTHEW SYTHANDONE – The Man Understudy**

Matthew is a native Seattleite, and a senior graduating from Cornish College of the Arts this spring with a BFA in Musical Theatre. Matthew is a performer, arts administrator, and teaching artist. He is thrilled to be back at SCT after previously working in their Development and Patron Services departments. Instagram: @msythandone #mattyactor. Recent credits include: *7 Homeless Mammoths Wander New England* (Fantastic Z); *What She Means* (Matcha Theatre Works); and *Seussical* (Cornish College).



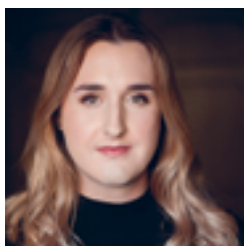
### **GLORIA ALCALÁ – The Woman Understudy**

Gloria Alcalá is a Latinx actor/singer/instrumentalist currently training in the Theatre department at Cornish College of the Arts and is delighted to be making their Seattle Children's Theatre debut working on *The Miraculous Journey of Edward Tulane*. Last seen at Cornish in *Lift: A Musical* (French Teacher), *Much Ado About Nothing* (Benedick), and *The Sins of Sor Juana* (The Novice). Other credits include *Native Gardens* (Landscape Technician, Intiman Theatre); *Disenchanted!* (Belle/Little Mermaid/Rapunzel, Manches Productions), *The Pirates of Penzance* (Kate, The Core Ensemble). Next, catch Gloria in *Bright Star* at Taproot Theatre Company as Lucy! Thank you to Carol, mom, Vicki, and Bill.



### **SARA GLAUSER – The Musician Understudy**

Sara hails from Saint George, a small town in southern Utah, and is so excited to be making her debut at Seattle Children's Theatre! Her recent credits include *A Winter's Tale* (Perdita/Gaoler) with Freehold Engaged Theater Tour; *Pirates of Penzance* (Kate '16, Ruth '17) with The Core Ensemble; and *Vinegar Tom* (Alice), *The Clown Show* (Gretchus Gatchi), *O-fest* (Actor/Director/Playwright), *Spring Awakening* (Wendla), *O Beautiful* (Gwen), and *The Myth Projects 2016* with Cornish College of the Arts. There she will receive her BFA with a concentration in Original Works in the Spring of 2019.



### **CASEY KITZMAN – The Traveler Understudy**

Casey is currently finishing up their final semester in the Musical theater program at Cornish College of the Arts. Born and raised in Milwaukee, Wisconsin, Casey had the opportunity to work with the Milwaukee Repertory Theater in their annual production of *A Christmas Carol* for eight years. They also worked with First Stage Children's Theater on *Shrek: The Musical* (Pinocchio), *Big Fish*, *Anatole*, *BIG: The Musical*, and *Baker Street Irregulars* (Tiny) as well as spending several years as a student and intern for First Stage's summer theater academy. Most recently they have appeared in *Seussical* (Mayzie), *Spring Awakening* (Georg), and *Urinetown* (Tiny Tom) at Cornish. Casey would like to thank all of their mentors and loved ones who have always supported them.



\* Indicates members of the Actors' Equity Association



# FIND YOURSELF IN A GOOD BOOK!

## FOR CHILDREN

*The Underneath*

Kathi Appelt

*The Velveteen Rabbit, Or, How Toys  
Become Real*

Margery Williams

*Love*

Matt de la Peña

*Toys Come Home: Being the Early  
Experiences of an Intelligent Stingray,  
a Brave Buffalo, and a Brand-New  
Someone Called Plastic*

Emily Jenkins

*Two Bobbies*

Kirby Larson

*Where the Mountain Meets the Moon*

Grace Lin

*Winnie-the-Pooh*

A. A. Milne

*Red Ted and the Lost Things*

Michael Rosen

*Killer Whale Eyes*

Sondra Simone Segundo

## FOR PARENTS & TEACHERS

*Survivors: Extraordinary Tales from  
the Wild and Beyond*

David Long

*F is for Feelings*

Goldie Millar and Lisa Berger

## WEBSITE

*Kate DiCamillo's official website*

[www.katedicamillo.com](http://www.katedicamillo.com)

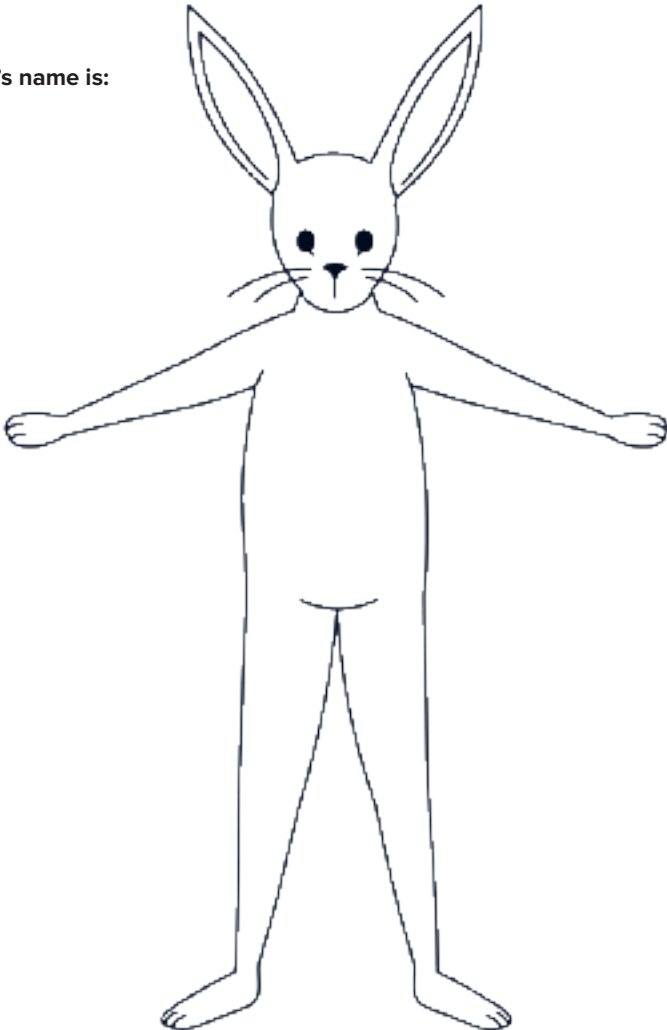
# A RABBIT'S JOURNEY

In *The Miraculous Journey of Edward Tulane*, everyone who meets Edward makes him into what they need him to be. By helping them through different challenges, he is rewarded with new experiences and learns to love others.

Here is a china rabbit of your very own, waiting to go on a journey. Dress it however you want and give it a name. Then give it to a friend or mail it to someone you know far away and ask them to take your rabbit on an adventure to meet new people. Maybe your rabbit can join them to help the community or do a good deed. Ask them to tell you what your rabbit is doing and take pictures to send you.

We'd love to hear the stories and see the pictures of your rabbit's journey, too!  
Post your photo with **#shareyourjourney**

**My rabbit's name is:**



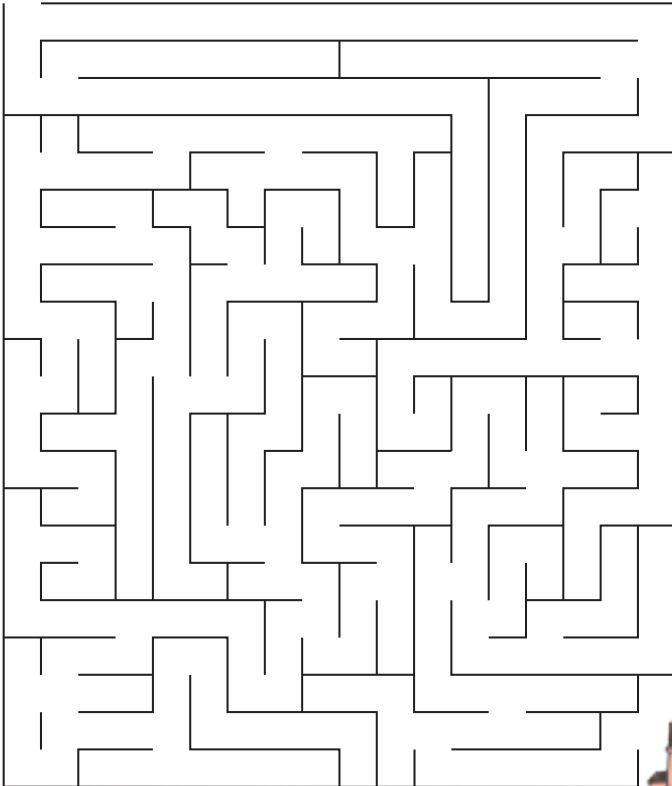
# Encore's Encore



**Edward Tulane has lost his way.**  
Complete the maze to help Edward finish his journey and find his home!



START



FINISH

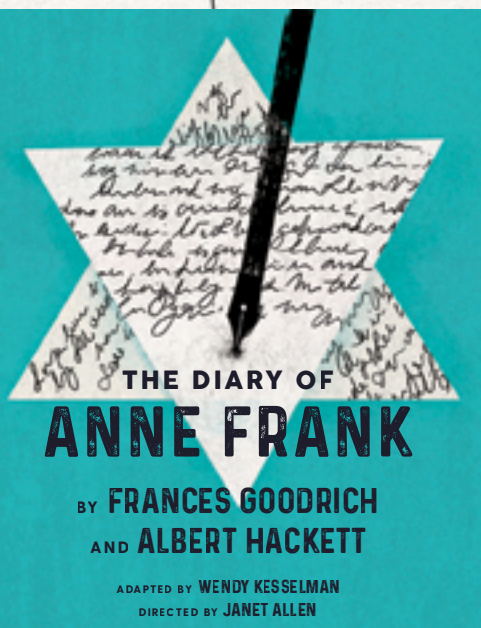
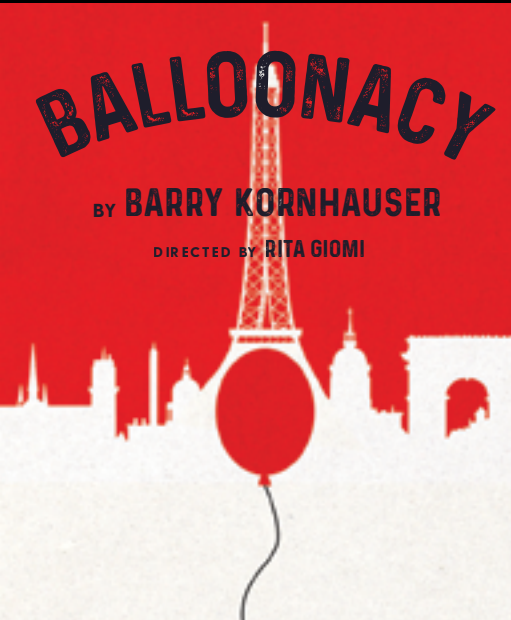


DON'T MISS OUR OTHER GREAT SHOWS  
THIS SEASON!

# BALLOONACY

BY **BARRY KORNHAUSER**

DIRECTED BY **RITA GIOMI**



# THE DIARY OF ANNE FRANK

BY **FRANCES GOODRICH**  
AND **ALBERT HACKETT**

ADAPTED BY **WENDY KESSELMAN**  
DIRECTED BY **JANET ALLEN**

PURCHASE A PACKAGE FOR \$110 AT  
SCT.ORG OR BY CALLING 206.441.3322

## SCT STAFF

---

### ARTISTIC

Trick Danneker  
*Executive Assistant & Casting Associate*  
Rita Giomi  
*Artistic Associate*  
Courtney Sale  
*Artistic Director*

### EDUCATION PROGRAMS

Meredith Berlin  
*Arts-Based Learning Program Administrator*  
Laura Knot  
*Associate Director of Education*  
Scott Koh  
*Arts-Based Learning Program Manager*  
Rachel Lee  
*Education Registrar*  
Sarah Lloyd  
*Education Specialist*  
Tiffany Maltos  
*Associate Director of Education*  
Johamy Morales  
*Director of Education & Summer Season*  
Laura Shearer  
*Education Fellow*

### DEVELOPMENT/SALES & MARKETING

Jose "Jojo" Abaoag  
*Marketing & Community Partnerships Manager*  
Beth Baker  
*Graphic Designer*  
Caitlin M. Bell  
*Institutional Giving*  
Heather Gautschi  
*Communications Manager*  
Clare Hausmann Weiland  
*Development Director*  
Carolyne Holcomb  
*Director of Sales & Marketing*  
Marisa Iliakis  
*Graphic Designer*  
Sofie Kline  
*Special Projects Associate*  
Deanne Liu  
*Manager of Development Events*  
Carly Mungovan  
*Digital Marketing Manager*  
Rachel Whalen  
*Major Gifts Officer*

### ADMINISTRATION

Eric Bischoff  
*IT Administrator*  
Braden Catt  
*Facilities & Rentals Manager*  
Lesley Fox  
*Finance Director*  
Kevin Malgesini  
*Managing Director*

---

Sue McAllister  
*Accounting Manager*

Kanani Reichlin  
*Data Operations Manager*

Kristina Roy  
*Business Office Associate*

Beth Spencer  
*General Manager & EDI Steward*

#### **PATRON SERVICES**

Katherine Ballard  
*Patron Services Associate*

Stephanie Couturier  
*Patron Services Manager*

Echo Davidson  
*Patron Services Associate*

Aimee Filippi  
*Gift Shop & Concessions Manager*

Kali Greenburg  
*Customer Service Representative*

Tammy Hase  
*Volunteer Coordinator/Board Liaison/Office Assistant*

Rachel Henderson  
*Patron Services Associate*

Emily Huntingford  
*Customer Service Representative*

Daniela Hernandez  
*Patron Services Associate*

Whitley Lewis  
*Ticket Office Manager*

Katherine Oberg  
*Patron Services Associate*

#### **PRODUCTION**

Jordan Kelly Andrews  
*Associate Production Manager*

Elizabeth A. "Fried" Friedrich  
*Prop Shop Manager*

Sarah Gordon  
*Costume Shop Manager*

Michael K. Hase  
*Technical Director*

Eric Koch  
*Assistant Technical Director*

Laura Karavitis  
*Production Coordinator*

Michael Wellborn  
*Production Manager*

#### **BACKSTAGE CREW**

Craig Bradshaw  
*Master Electrician*

Christine Brauch  
*Lead Electrician*

Mariah Brougher  
*Lead Sound Engineer*

Nick Lauris  
*Master Stage Carpenter & Crew Chief*

## **ADVENTURE IS CALLING**

Make memories at Kids Discovery Museum  
on beautiful Bainbridge Island!



Hands-on Exhibits  
Enrichment Programs  
Birthday Parties  
Field Trips

206.855.4650

[kidimu.org](http://kidimu.org)

Open daily. Steps away from the ferry!



**S D +**  
**SPECTRUM  
DANCE  
THEATER**  
DONALD BYRD

**Now Enrolling  
Beginner thru  
Advanced Classes**  
18 months to adult

First Class Free + Free Parking  
[www.spectrumdance.org](http://www.spectrumdance.org)

# SCT STAFF CONT'D

---

Nick Koester

*Lead Electrician*

Emily McLaughlin

*Wardrobe Assistant*

Erin Perona

*Wardrobe Master*

Laura "Bunny" Seagraves

*Lead Stagehand*

Haley Parks

*Lead Dresser*

Joe Swartz

*Master Sound Engineer*

Kyle Thompson

*Lead Sound Engineer*

Alex Trewin

*Lead Stage Hand*

## **COSTUME SHOP**

Laura Girardot

*Cutter & Draper*

Kelsey McCornack

*First Hand*

Rose Hope

*Stitcher & Crafts Assistant*

Cheyenne Smith

*Master Crafts Artisan*

## **PROPERTIES SHOP**

Daphne Maurides

*Master Properties Artisan*

Todd Peacock-Preston

*Lead Properties Artisan*

## **PUPPETRY SHOP**

Annett Mateo

*Master Puppet Artisan*

## **SCENIC SHOP**

Dave Baldwin

*Scenic Shop Foreman*

Jeff Cook

*Charge Scenic Artist*

Zach Danneker

*Scenic Carpenter*

John Lammon

*Scenic Carpenter*

Clark Sandford

*Master Scenic Carpenter*

Kevin Wilson

*Assistant Charge Artist*

## **TEACHING ARTISTS**

Anne Allgood

Hattie Andres

Lauren Appel

Nicole Beerman

Zoey Belyea

Meredith Berlin

Kiron Blackwood

Eric Bradler

Stacey Bush

Ann Marie Caldwell

Rachel Carlson

Keni Cohen

Megan Collins

Stephanie Couturier

Nathan Cox

Josh Darby

Samie Detzer

Chris DiStefano

Maria Dogero

Kate Drummond

Karissa Elliott

Karina Garcia

Meme Garcia

Matt Giles

Alex Hagen

Drew Highlands

Laurn Hochberg

Andrea Ichikawa

Eric Johnson

Gillian Jorgensen

Amy Jerkiewicz

Tara Kaine

Danny Kam

Marc Kenison

Laura Knot

Anita Kuroiwa

Jessica Low

Tiffany Maltos

Alaji Marie

Rob Martin

Dana Mitchell

Maddie Napel

Maia Nowack

Pilar O'Connell

Beth Pollack

Dave Quicksall

Bobbin Ramsey

Samip Raval

Alex Reed

Angela Rinaldi

Marisol Rosa-Shapiro

Carol Roscoe

Christie Rotarius

Clark Sandford

Jasmine Sim

Katy Tabb

Julia Thornton

Alex Ung

Kendall Uyeji

Kathryn van Meter

Markeith Wiley

Andrew Wilkes

Madeleine Winward

Amber Wolfe

Gen Zoufal



## Providing musical instruments to students in need

We accept lovingly used instruments and donations to repair them.



[www.Music4Life.org](http://www.Music4Life.org)  
(206) 409-3275

# INDIVIDUAL DONORS

Seattle Children's Theatre recognizes the generosity of the following individuals who have contributed to our Annual Fund, Capital Campaign, Gala Raise the Paddle, Special Fundraising, or Education programs in the last year. The listed contributions of \$1,000 or more were received between July 1, 2017 and December 27, 2018. Listed contributions of up to \$500 were received between July 1, 2017 and June 30, 2018. Your gifts have allowed SCT to continue changing the lives of thousands of children and families in our region by creating access to the world of live theatre and arts education. **Thank you!**

To learn more or to make your tax-deductible donation, please visit [www.sct.org/support](http://www.sct.org/support) or call 206.443.0807.

## PLAYWRIGHT'S CIRCLE

### \$50,000 and above

Eve and Chap Alvord

## PRODUCER'S CIRCLE

### \$25,000 - \$49,999

Elias and Karyl Alvord  
The Ballmer Family  
Steve Davis and Bob Evans  
Gladmar Trust  
Pat and Mary Ellen Hughes  
Keith and Mary Kay McCaw Family Foundation  
Eleanor and Charles Nolan

## ARTIST'S CIRCLE

### \$10,000 - \$24,999

Ashley Andrew and Adam Crowley  
Shari Bitcon and Paul Donnelly  
Bobbie and Jon Bridge  
Donna Cochener and Family  
Lara and Peter Constable  
Marie Farrelly and Jeremy Griffin  
Tracy and Alice Forsythe  
Alan and Jennifer Heuberger  
Michael and Laura Larson  
Joy Thal and Chai Mann  
Zoey and Jordan Minkove  
Mary Pigott  
Nicolas and Elizabeth Richardson

## PATRON'S CIRCLE

### \$5,000 - \$9,999

Mollie and Carl Albrecht  
Jennifer Berger  
Aiko Bethea  
Ryan and Danielle Boone  
Laura Buckland

Matt and Amy Eyler  
Eliza Flug and Chris Coburn  
Stacie Foster and Laurence Cock  
Tiffany Gilbert and Ken Efta  
Alice and Tracy Forsythe  
Masha and Glenn Hart  
Richard and Marilyn Herzberg  
Linda Hartzell and Mark Perry  
Ruth and William Ingham  
Linda and Ted Johnson  
Karl and Anne Korsmo  
David Landau and Tanya Bruhner  
Myra and Mike McCoy  
Alexander Oki  
Valorie and Larry Osterman  
Andrew and Carin Parcel  
Louise Pietrafesa and Anna Kaminski  
Judy Pigott  
Carrie D. Rhodes  
Laura and Jim Smith  
Heather Wilde and Jim Gierman  
Rosemary and Kenneth Willman  
Wanda Wong and Mark Masterson  
The Bruce Wylie Story Fund

## DISTINGUISHED CHAMPIONS

### \$2,500 - \$4,999

Rene Alkoff  
Ed and Heather Blahous  
Susan Leavitt and William Block  
Erin and Greg Coomer  
Kate Forsyth  
Mimi Gan and Everett Billingslea  
Debbie and Dave Grant  
Jerome Greene  
Shelly Heier  
Kristen Hoehler  
Mimi and Edward Kirsch  
Elizabeth and Brian Matsubara



Natalie and Keith Matthews  
M.J. and John McDermott  
John and Lauren McGuire  
Mimi and Todd Menenberg  
William and Sally Neukom  
Evelyn Bundesmann and Craig Peeper  
Sally Rampersad  
Scott and Danielle Ruthfield  
Warren and Nancy Smith  
Betty Lou Treiger  
Jared and Amanda Van Kirk

## **CHAMPIONS**

**\$1,000 - \$2,499**

Suzanne Allen  
Perry and Christine Atkins  
Jesse and Toni Bennett  
Elizabeth and Neil Bergquist  
Inez Noble Black  
Cindy and Bob Blais  
Meghan Brown  
Joanna Callahan  
Jennifer and Phil Carter  
Barbara and Ken Christoferson  
Kirk and Deborah Clothier  
Tery and AnnaLisa Danysh  
Mark Sherman and Jennifer Daves  
Allan and Nora Davis  
Priscilla Dickert  
Eaton Skinner Family  
Teresa and Peter Engrav  
Miya and Joe Ferguson  
Rebecca and Chad Fischer  
Deborah and Robert Fleming  
Cynthia Foster  
Jacqueline Borges and Craig Hajduk  
Adam and Quyen Hamilton  
Caroline and Peter Hauge  
Lisa Henry  
Lisa Hewson  
Melinda and Bob Hord  
Joan Hsiao-Bromley and James Bromley  
Tami Hurwitz  
The Jandl Family  
Karin and Scott Jones  
Tom Lennon and Patricia Keegan  
Karen Koon  
Mascha Kroenlein and Charles Peterson  
Lena and Daniel LeCheminant  
Edmond and Barbara Lee  
Jackie and Peter Mansfield  
The McGanney Family  
Mitzi Morris  
Ann and Terry Mix

Laurie and Scott Oki  
Ron Pederson and Jeff Sakuma  
Dinny and Alex Polson  
Mary Pugh  
Dan and Cecelia Regis  
Kerry Richards and Jan Arntz  
Kate and Matt Riley  
Natasha Rivers  
Catherine and Thurston Roach  
Amy and Laurent Rotival  
Barb Larimer and Bob Royer  
Sharon Sale  
Lee-Norah Sanzo  
Cathy Sarkowsky  
Margaret Schaaf and Stuart Dunwoody  
Petra Schindler-Carter and Dean Carter  
Jennifer and Nicholas Seibert  
Haeryung Shin and Andrew von Nordenflycht  
Jonas and Jillian Simonis  
Colette Stallbaumer and Warren Stickney  
Heidi and Patrick Turner  
Shirley and David Urdal  
Julie and David Ward  
Walter Weber and Teri Kopp  
Nancy Weintraub  
Alexander Williams Miller  
Carol and Bryan Willison  
Russell Wilson  
Anonymous – 6

## **DIRECTORS**

**\$500 - \$999**

Kathleen Albrecht  
The Anderson Family  
Phoebe and Lucius Andrew  
Jan and Maria Beck  
The Blais Family  
Marshall Booker  
Jarvis and Michelle Bowers  
Kendall and Jay Cammermeyer  
Susan and Craig Chambers  
Betti Fujikado and Jim Copacino  
Barbara and James Crutcher  
Trea and Benjamin Diament  
Toby Diamond  
Holly Dunlap  
Nancy Elliott  
Bruce Easter and Cynthia Faubion  
Jana Goode  
Ken Dunkelberg and Laurie Hammack  
James O. Hanlon  
Cynthia Huffman and Ray B. Heacox  
Richard and Betty Hedreen  
Susan and Matthew Hillman

Susan Trainer Holt and John Holt  
Holly Nguyen and Doug Holtzman  
Jane and Randall Hummer  
Claudia Hung  
The Jarvik Family  
Rebecca Lally  
Erika and Dave Larimer  
Joanne and Nicholas Lee  
Francine and Donald Loeb  
Cat and Brent Mason  
Rachel McCall  
Hillary K McNeill  
Cheryl McQuiston  
Pamela and Donald Mitchell  
Angela Finney and Robert Mumford  
Carla Nichols  
Norberg Family Foundation  
Lisa and Keith Oratz  
Andrew Jessup and Heidi Powell  
Lynn Prunhuber  
Ann Ramsay-Jenkins  
Steven and Frederica Rice  
The Sedgley Family  
Jennifer Jocelyn Sill  
The late Dorothy Simpson  
The Sing and Stewart Family  
Jenny Pang and Jeffrey Sullivan  
Aimee and Gregory Vaughan  
Mr. and Mrs. Clyde Wilson  
Jay Hereford and Margaret Winsor  
The Hert and Wohl Family  
Anonymous – 1

## **FRIENDS OF SCT**

### **\$100 - \$499**

Alyssa Aimette  
Alan Alhadeff  
Christy Allen  
Mary Ann Allen  
Lorraine Amman Blau  
Shannon Anderson  
Brian Atwater  
Allison Augustyn  
Patty and Randy Austin  
Nancy Baggott  
The Bailey Family  
The Balter Family  
The Bankowski Family  
Tonie and Carlos Basulto  
Susan Bauer  
Joesph Bellio  
Suzanne Benson  
Margaret Berman  
Michelle Birdsall

Suzette and James Birrell  
Jenifer Carter and Chad Bitzer  
Erik and Donna Bjarke  
Trevor Blanarik  
Sarah Blohm  
Jennifer Bloom  
Linda Bloom  
Jean Withers and John Booker  
Amy and Mark Bosch  
Dr. and Mrs. Gregory Brake  
Matthew Bricker-Mounts  
Laura Jean and Val Brustad  
Beverly Bunzel  
Erin Rance and Scott Bush  
The Callahan-Simonsen Family  
Arlene and John Carpenter  
Laura-Mae Baldwin and Carl Chew  
Nancy Chou  
Tero Collin  
Combined Federal Campaign  
Karen Copp  
Phillip Cosand  
Elizabeth Leber and Andrew Coveler  
Kathy and Brad Cowles  
Duane and Lisa De Luca  
The deAlteris Family  
Ethan and Erica Delavan  
David Dichek  
Marilyn Dillard  
Roberto and Cynthia Dondisch  
Rebecca Dunne  
Deborah A. Dwyer  
Adam Edwards  
Mike Egan  
Lisa Elliott  
The Erickson Family  
Florence and R. F. Evans  
Elizabeth Fleming  
K. Denise Fischer-Fortier and James Fortier  
Cynthia Foster  
Catharine and Heath Foxlee  
Noreen Frink and Phillip F. Frink, Jr.  
Susan and Albert Fuchs  
Campbell Gerrish  
Susan Lowance and Mike Gaebler  
Stephen Gilbert  
Shirley Gnojek  
Kathleen Golden  
Stephen Goldman  
Laura B. Gowen  
Sheree Miller and Ben Greer  
Jim Greer  
Janet Allen and Joel Grynheim  
Linda Haas

Margot and Drew Hackleman  
 Mimi and Tom Hackleman  
 Erika and Brian Hardy  
 Jennifer Harris  
 Camille Heinen  
 Danise and Jeremy Heisey  
 Melissa Hensley  
 Renee and Joshua Herst  
 The Higgins Family  
 Carol and Tom Hogan  
 Bob Horvath  
 Kimberly Howell  
 Lynn and Pat Hughes  
 Wendy Hutchins-Cook  
 Samantha and Steven Inks  
 Wendy Jacomme  
 Tanya Bednarski and Craig Johnson  
 Kristina and G. Ted Johnson  
 Portia Jones  
 Christine Kakos  
 Deborah Kartin  
 Martha Noerr and Jeff Keane  
 Nancy and Ken Keiter  
 Karen Kelleher  
 Kristen and Brad Kelln  
 Kim and Doug Killgore  
 King County Employee Giving Program  
 The Kirkman Family  
 Bonnie L. Kirkpatrick  
 Kathryn Klosky  
 Mary Kollar  
 Eileen Kulman  
 Laura and John Kvasnosky  
 Mary Lou and Bill Laprade  
 Yvette Latchman  
 Margaret Levin  
 Liza Levine  
 Micki Lippe  
 Elizabeth and Otto Loggers  
 The Maifeld Family  
 Kevin Malgesini and Johnathan Luster  
 Michelle Downey-Magee and Dail Magee Jr.  
 Courtney Sale and Sean Manning  
 Mary Anne Martin  
 John McLaughlin  
 Laurie Andres and Sharon McNamara  
 Matthew Messina  
 Dee Mulford  
 Andrea Myers  
 Angela Neal  
 Marjorie and Ken Neil  
 Cassandra Newell  
 Christopher Nichols  
 Kate O'Brian  
 Rosemary O'Neil  
 Marjon O'Neil-Dunne  
 Alison Overseth  
 Louise and Peter Pathe  
 Catherine and Matt Pederson  
 Kristina Peterson  
 Eron Huenefeld and Wayne Pishue  
 Donna and Kenny Pittman  
 Peter Londborg and Nancy Plunkett  
 Kevin Proctor  
 Megan and Greg Pursell  
 Andrea Rabinowitz  
 The Ranney and Edlefsen Family  
 Tahirah Razak  
 Soklinh Khoi and Andy Rebele  
 Kanani and Max Reichlin  
 Kay and Scott Reichlin  
 Nancy Renkiewicz  
 Bob and Peggy Rinne  
 Jim Roberts  
 Jeannine Rogel  
 Carla Saulter  
 Karen Selboew  
 The Siebrecht Family  
 Sonia Siegel Vexler  
 Margee Sigley  
 Erika Sigmon  
 David Silverman  
 Ron Sim  
 The Smith Family  
 Maya Smith  
 Evette Gee and Mitchell Smith  
 Gail Solomon  
 Bobbie Wallinger and Dennis Sorensen  
 Jeff Stokes  
 Wayne Storer  
 Jennifer Streun  
 Strickland Family  
 Eunhee and Robert Sumner  
 The Swenson and Thurston Family  
 Doug Moll and Annie Thenell  
 Nadine Thompson  
 Richard Tutor  
 Mandy and Michael Upton  
 Judith Van Nice  
 The Vangelos and Schneidmiller Family  
 The Vaughn and Dobel Family  
 Amelie von Saint Andre  
 Joan Watson  
 Kimberly Watson and Glen Draper  
 Chris Weber  
 The Wells and Worswick Family  
 Kayla Weiner  
 Ken Whelan

Taletta Wibmer  
Jason and Carrie Wilcox  
Carol Williams  
Becky and Rob Witmer  
Carol Wolfe Clay  
Christine Woskett  
Cheri Yonich  
George Zaima  
Genevieve Zoufal  
Dalia and Antonio Zuniga  
Anonymous – 3

#### **TRIBUTE GIFTS**

**Thank you for the gifts made in honor or memory of the following patrons.**

*In honor of  
Stacie Foster*

Shannon Anderson  
Susan Bauer  
Carolyn Brodsky  
Duncan Cock Foster  
Griffin Cock Foster  
Terri Conner  
Dorsey Davidge  
Cynthia Foster  
Dori Gillman  
Kristin Hahn  
The Higgins Family  
Rebecca Hoch  
Nicci Jasmin  
Liza Levine  
Kevin Malgesini  
Julie Merchant  
Kate O'Brian  
Alison Overseth  
The Pollard Family  
Liliana Retelny  
Chaim Rosenbaum  
Courtney Sale and Sean Manning  
Caroline Thelen

*In honor of  
Rayanna Horvath*

Dan Dyer  
Dave Dyer  
Katie Frisbie  
James O. Hanlon  
Deborah Horvath  
Justin Yaeger  
Chris Yingling

*In honor of  
Laurie and Scott Oki*

Seeyourimpact.org

*In honor of  
Laura Smith*

James O. Hanlon

*In honor of  
Paul and Farley Bartelmes*

#### **MATCHING GIFT COMPANIES**

Adobe  
Boeing  
Bill and Melinda Gates Foundation  
Goldman Sachs  
Google  
Joshua Green Foundation  
Lake Partners Strategy Consultants  
Microsoft  
Weyerhaeuser Giving Fund

# OUR COMMUNITY PARTNERS

---

Seattle Children's Theatre is pleased to acknowledge the generosity of the corporations, foundations, and government agencies that have supported SCT in the last year. The listed contributions were received between July 1, 2017 and June 30, 2018. **Thank you!**

## \$100,000 and above

Charlotte Martin Foundation  
The Shubert Foundation

## \$50,000 - \$99,999

ArtsFund  
Bill & Melinda Gates Foundation  
Microsoft

## \$25,000 - \$49,999

Keith & Mary Kay McCaw Family Foundation  
Nesholm Family Foundation  
Safeco Insurance Fund  
The Boeing Company  
The Seattle Foundation

## \$10,000 - \$24,999

Adrienne Coons Memorial Fund  
Moccasin Lake Foundation  
Robert B. McMillen Foundation  
The Morgan Fund at Seattle Foundation  
The Reed Foundation  
The Sheri and Les Biller Family Foundation  
USI

## \$5,000 - \$9,999

Anonymous  
Jubilation Foundation Fund of Tides Foundation  
Treeline Foundation  
U.S. Bank

## \$2,500 - \$4,999

Fales Foundation Trust  
Horizons Foundation  
Stoel Rives, LLP  
The Dorsey & Whitney Foundation  
Wells Fargo

## \$1,000 - \$2,499

John E. Manders Foundation  
Poncho Legacy Fund  
Tulalip Tribes Charitable Contributions  
Wyman Youth Trust

## SEASON SPONSORS



## IN-KIND PARTNERS

Affordable Custodial Supplies, Inc.  
Airclean Energy  
DCG ONE  
Encore  
Hales Ales  
KCTS9  
Mangetout  
Pacific Science Center  
SKIS Painting  
The Snap Bar

## GOVERNMENT SUPPORT





Illustration by Bagram Ibatoulline

## ALL ABOUT LOVE

---

Love in our lives makes us better people. In *The Miraculous Journey of Edward Tulane*, Edward comes to understand the many active forms love takes. Fred Rogers described love this way, “Love isn’t a state of perfect caring. It is an active noun like struggle. To love someone is to strive to accept that person exactly the way they are, right here and now.” Throughout Edward’s journey he sees who has that ability and in turn, learns how to reciprocate.

There are many ways love shows up in our lives. Parents and caregivers demonstrate love through caring for our well-being, talking through challenges, teaching us, and offering direct expressions of love. In pre-school and early elementary years, loving friendships help us develop social and emotional skills that increase our sense of belonging. Friendships can also allow us to grow in self-esteem, leading to better performance in school. One profound way to show love to our friends is to inspire confidence in them. Genuine

affirmations and positive feedback are meaningful ways to show love. There are times when love feels challenging. Sometimes love gets buried under feelings of overwhelmingness, exhaustion, and worry. In those moments it is important to know that even when stress surfaces, love remains. As we grow, thinking about the ways we offer self-compassion or self-love will bolster our ability to share love with other people, reminding ourselves even in moments of difficulty that we have choices. We can choose to treat ourselves with kindness. We can choose to interact with others wholeheartedly.

Love creates a physiological response in the body. We are literally wired to give and receive love. Doing something nice or an act of caring releases endorphins, which are hormones that help relieve pain. Even simply watching someone extend kindness to another can produce this effect. Studies have shown those who have more

love in their lives through friends and family live longer!

Love and kindness are truly healthful. Though there are many benefits to practicing love beyond health. People who express and accept love every day in their lives are on the whole happier humans. The need for love in our lives lies at the very foundation of our species. Love promotes our connectedness and interdependence with one another. It makes us safer and more generous. Those qualities can extend to larger communities helping to make our world better.

Edward's journey teaches him not only about what love is, but what it means to him when he accepts and receives the love of others. Early on, Abilene's grandmother tells him a story about a vain princess who cares nothing about those who love her in hopes that it would help him to understand. Later, while he is on his journey, the fisherman's wife, Nellie, also tries to explain what love means. But when Edward sees the effects of true love during his time with Bull and Lucy, and then with the children Bryce and Sarah Ruth, it brings it all together and he finally accepts what love is and what it means to him. It can be joyful, comforting, and, yes, sometimes even heartbreaking.

As Fred Rogers said, "Deep within us — no matter who we are — there lives a feeling of wanting to be loved, of wanting to be the kind of person that others like to be with. And the greatest thing we can do is to let people know that they are loved and capable of loving."

*Content from SCT's Active Audience Guide*

**NEXT ON STAGE AT SEATTLE  
CHILDREN'S THEATRE...**

**MARCH 14—MAY 5, 2019**



**TICKETS START AT \$20, BUY NOW!**

SEATTLE | BELLEVUE | MEDINA | KIRKLAND | BURIEN  
BOTHELL | MOUNTLAKE TERRACE | WEST SEATTLE

# 2019 CAMPS for CURIOUS MINDS

Nurture your child's curiosity for science by signing up for our hands-on summer camps for kids in grades PreK-8.

PacSci summer camps offer endless opportunities to explore science, technology, engineering, art, and math in eight different locations throughout King County! Inspire the inner scientist in your child and register online today.

[pacsci.org/summer-camps](http://pacsci.org/summer-camps)

