

# THE BEST SUMMER EVER!

MAR 22 –  
APR 17


By KEVIN KLING

Directed by STEVEN DIETZ



SEATTLE  
CHILDREN'S  
THEATRE

# A WORD FROM OUR SEASON SPONSOR



Seattle Children's Theatre and Microsoft share a passion for creativity, learning and excellence. Year after year, Seattle Children's Theatre delivers high quality entertainment that captivates the imaginations of young people and their families, throughout the Pacific Northwest. That's why Microsoft Philanthropies is proud to sponsor the 2021-2022 Season.

Community involvement is an integral part of our culture at Microsoft. We support the work of local nonprofits and encourage employee investment and volunteerism. Our employees respond in an incredible way, volunteering thousands of hours and contributing each year to local nonprofits, including Seattle Children's Theatre.

A thriving arts and cultural scene, a network of human services providers, and a world class education system are critical to the continued vitality and attractiveness of the Puget Sound region. Through partnerships with organizations such as Seattle Children's Theatre, we aim to create an environment where the arts will thrive for generations to come. On behalf of Microsoft and our employees in the Puget Sound area, we thank Seattle Children's Theatre for enriching our community. Enjoy the show!

**Kate Behncken**

*Vice President*

Microsoft Philanthropies



# A WORD FROM KEVIN MALGESINI

Dear Friends,

Two years ago, *The Best Summer Ever!* team was preparing for its first day of on-stage rehearsals for SCT's fourth production in the 19-20 season. What we could not have anticipated was a pandemic-forced closure. We were forced to walk away with a set on stage, costumes and props ready to go, but a project unrealized. After a much-anticipated 24 months, it brings me tremendous joy to welcome the entire cast and creative team back to our 21-22 season.

Though much of the world has changed since we started this journey, one thing that remains true is SCT's commitment to telling stories that center on the experience of young people. We are fortunate to have Director Steven Dietz, an artistic force and longtime friend, expertly direct this production written and performed by nationally acclaimed storyteller Kevin Kling. Joining the collaboration is Musician Robertson Witmer, a regular SCT collaborator whose work has been seen across Seattle stages.

As the lights go down and our journey unfolds, we invite you to bring your whole self. One of SCT's values is Clap Hard, Cry Hard. We invite you to laugh big, cry big, ask big questions and feel big feelings. This story reminds us that even as people learn and grow, life changes a little bit at a time. Only when looking back do we realize it happened all at once. During your time with us, if you cross paths with anyone who makes this show possible, please stop and thank them for their work. From the artist on stage to the designers, directors, carpenters, painters, costume makers, production crews, educators, marketers, and administrators—we have made this magical experience possible for you.

Welcome to the Theatre, and please enjoy Kevin Kling's *The Best Summer Ever!*

Sincerely,

A handwritten signature in black ink that reads "Kevin Malgesini". The signature is fluid and cursive, with a long, sweeping underline.

Kevin Malgesini, *Managing Director*



# SYNOPSIS

This show is performed by Kevin Kling himself. Kevin enters and introduces himself to the audience. He points out that everyone has something that makes them different from others. Kevin, for example, has only four fingers on his left hand and his right arm doesn't move.

We then join Maurice, played by Kevin, on the last day of school. The bell rings. As everyone leaves, Maurice waits for his sister Emily to walk him home. He used to walk home with his brother, Marv, but one day they got into some trouble at a convenience store, so now Emily is tasked with providing supervision. Emily, annoyed that she had to wait for Maurice for so long, hastily tries to grab his hand to walk him across the street when she realizes she accidentally took the hand of a boy from her grade. In that moment, Maurice notices a change in Emily. He tells us that everyone in his family changed that summer, which is why it was the best summer ever.

The summer started with the funeral of Maurice's Uncle Alfie, which is held at their grandparent's farm. At the farm, Maurice talks with his grandpa. Maurice sees that chicken and tells him that Joyce stopped laying eggs, which means it won't be long before she becomes dinner. Fearing for her life, Maurice secretly takes Joyce home with him.

When the family arrives home, dad finds Joyce in the trunk. Maurice pleads with his dad to let him keep the chicken as a pet and his dad agrees as long as Maurice builds her a coop and promises to feed and take care of her.

Later that summer, Grandpa comes to visit. Maurice shows him the garden where he planted the seeds, but Grandpa sees that the garden is not growing well. He tells Maurice to leave out plates of food for the little people who live in the garden. If you don't leave out plates of food for the little people, Grandpa tells Maurice, the little people will cause mischief.

Grandpa tells Maurice a fairytale about a girl who once lied to her father and the consequences she faced. Maurice realizes that Grandpa knew he was lying about his love for farming. He promises never to lie to his grandpa again, and admits he's a terrible farmer. Grandpa agrees to help Maurice with his garden. Maurice now launches into the story of his sister Emily's worst day that summer. Emily was taking part in a car wash fundraiser for her marching band. Maurice is watching from across the way when he sees the boy Emily held hands with in the crosswalk earlier. Maurice yells to Emily pointing to the boy on the bike. Emily gets in the car she's washing and drives after the boy. While she's driving, she crashes into an ice cream truck, the back of which falls open and we discover Marv with armfuls of ice cream bars. All the children are in deep trouble.

It's the Fourth of July and Maurice is grounded. He is sequestered to watch the fireworks from the backyard with his grandpa. Grandpa thinks the fireworks look like flowers. Maurice starts to see the similarities. Then Grandpa points out some constellations and the two of them begin to make up their own constellations such as pizza and wiener dogs. Maurice enjoys the time with Grandpa and makes a wish on a wishing star. Grandpa tells Maurice, "One day I'll be up in those stars," but not yet, they both agree.

One day, Marv gets a letter telling him that he failed a class and needs to go to Norwegian Camp to make up the grade. Maurice misses Marv while Marv is gone and asks to go to Norwegian Camp, but his father takes him backyard camping instead.

While camping, Maurice asks Dad to tell him a scary story. Dad tells Maurice about the "Collector," a man who escaped from an asylum nearby. He loves the smell of bug spray, Dad tells Maurice, which frightens Maurice because he just put on some bug spray. The Collector, however, hates the smell of roasted marshmallows. Maurice runs into the house and gets some marshmallows, graham crackers, and chocolate, and that's how he learned to make s'mores.

A week later, the family receives a letter from Marv asking to be picked up from Norwegian Camp, which is followed the next day by another letter. The second letter tells how Marv rallied the other kids at Norwegian Camp to attempt to plunder items from other nearby camps. This proved to be quite difficult, however, and they returned to camp a little worse for the wear. Because of his role in leading this attempted revolt, Marv was being sent home.

Summer is almost over. One night, Maurice's parents go out and leave the kids with Grandpa. Maurice goes out to the backyard to spend some time with Joyce, when he sees one of Grandpa's tools lying in the grass unattended. It is very unlike Grandpa to leave tools out, so Maurice knows something is wrong. Maurice finds his Grandpa on the ground, clutching his chest and saying, "my heart, my heart!" The kids jump into action, piling into Grandpa's car. Emily drives, Maurice navigates, and Marv sits with Grandpa to calm him down. They get him to the emergency room and once he's being taken care of, the kids call their parents. The doctors tell Mom and Dad that the kids helped save Grandpa's life.

School begins again. Emily holds hands with the boy she chased in the car, Marv gets a letter from a friend at Norwegian Camp and decides he wants to go back next year, and Maurice sees that a bluebell has grown in his garden. The bluebell is the flower of Norway, which reminds Grandpa of his home. He tells Maurice he is a good farmer.



# ACTIVE AUDIENCE GUIDE

**Want to explore articles, activities, interviews, and behind-the-scenes photos from *The Best Summer Ever*? Check out the Active Audience Guide by scanning the code below!**



# THE CAST



## KEVIN KLING

**MAURICE & PLAYWRIGHT** - Kevin Kling is so excited to be back with Seattle Children's Theatre, working with his best pal Steven Dietz and the legend Rob Witmer. Kevin has written many plays for children and family audiences including adaptations of *Lyle, Lyle Crocodile*, by Bernard Weber, *Busytown*, by Richard Scarry, (premiered at SCT, directed by Linda Hartzell) and *Lilly's Purple Plastic Purse*, by Kevin Henkes, (premiered at SCT, directed by Steven Dietz). He has also written original works including *Mississippi Panorama*, *Perfectly Persephone* and *The Best Summer Ever*.

His one-person shows *Home and Away* and *How, How, Why, Why, Why* and *Breakin' Hearts and Takin' Names*, premiered at Seattle Rep and went on to productions at various theaters including the Cincinnati Playhouse, the Goodman Theater, the Kennedy Center, the Denver Center for the Performing Arts and off Broadway's Second Stage Theatre.

Collaborating with composer Victor Zupanc, Kevin wrote the lyrics for *For the Birds*, *The Burning Wisdom of Finn McCool* and *The Twelve Dancing Princesses*.

Kevin is a frequent performer at the National Storytelling Festival in Jonesborough, TN. He has written five books. The PBS autobiographical documentary *Kevin Kling: Lost and Found* and in 2014 he was named the Minneapolis Storyteller Laureate by Mayor RT Rybak.

Kevin is very proud of his work as a playwright and performer with the Minneapolis-based Interact Center for the Visual & Performing Arts, a company that creates art in the spirit of radical inclusion. His website is: [www.kevinkling.com](http://www.kevinkling.com).

Thank you to Victor Zupanc and the Children's Theater in Minnesota.



## ROBERTSON WITMER

**MUSICIAN** - Rob's previous shows at SCT include *Red Riding Hood*, *Black Beauty*, *The Miraculous Journey of Edward Tulane*, and three productions of *Go, Dog. Go!* Other recent credits include: *Dracula*, *Romeo + Juliet* (ACT); *The Revolutionists* (Whitman College); *The Ghost of Splinter Cove* (Children's Theatre of Charlotte); *Comedy of Errors* (Seattle Shakespeare Company); *Orfeo ed Euridice*, *Tosca* (Seattle Opera) and *Greenwood* (Alvin Ailey American Dance Theater). His sound designs have also been heard at Seattle Rep, Intiman, Spectrum Dance Theater, Village Theatre, and Teatro ZinZanni. Rob plays with several bands, including The Love Markets and the Toucans steel drum band. Rob is a member of United Scenic Artists, USA-829

# THE CREATIVE TEAM

## STEVEN DIETZ

**DIRECTOR** – Director, SCT: *Red Riding Hood*, *Lilly's Purple Plastic Purse*, *Go Dog Go!* (co-written with Allison Gregory), *Honus & Me* (also playwright). Playwright, SCT: *The Rememberer*, *Still Life with Iris*, *Jackie & Me*. Recent Seattle: *Dracula* (ACT), *Last of the Boys* (Seattle Rep), *Lonely Planet* (West of Lenin), *On Clover Road* (Seattle Public). Recent premieres: *How a Boy Falls* (Northlight Theatre, Chicago), *The Great Beyond* and *The Ghost of Splinter Cove* (Actor's Theatre of Charlotte, Children's Theatre of Charlotte), *This Random World* (Humana Festival of New American Plays, Louisville). Other directing: Actor's Theatre of Louisville, Northlight Theatre, Denver Center Theatre Company, Los Angeles Theatre Center, Festival of Sydney (Australia), ACT, Seattle Rep, Westside Arts (Off-Broadway), and the Sundance Institute. Teaching: Professor of playwriting and directing at UT/Austin; Dramatists Guild "Traveling Master" – teaching classes in playwriting, story-making, and collaboration. Thank you, Courtney.

## MICHAEL B. PAUL

**STAGE MANAGER** – Mr. Paul has stage managed locally at the Seattle Repertory Theatre (most recently *In the Heights*, *The Children*), ACT, Intiman and the 5th Avenue Theatre. National credits include *The Guthrie*; Shakespeare Theatre in DC; Oregon Shakespeare Theatre; Milwaukee Repertory Theatre; Cincinnati Playhouse in the Park; Actor's Theatre of Louisville, Humana Festival; La Jolla Playhouse; Baltimore's Center Stage; Manhattan Theatre Club and the late Alaska Repertory Theatre. For The Seattle Children's Theatre: *Addy*, *An American Girl Story*, *Night of the Living Dead*, *Harold and the Purple Crayon*, *The Cat in the Hat*, *Pippi Longstocking*, *Dick Whittington and His Cat*, *Elephant and Piggie's* – "We Are In A Play!", *Naked Mole Rat Gets Dressed: The Rock Experience*, *Balloonacy* and *Corduroy*.

## EMMA BOSCH

**STAGE MANAGEMENT FELLOW/ PRODUCTION ASSISTANT** – After graduating from UW's Drama department in 2020 with COVID in full swing, Emma Bosch is delighted to finally be back in the theatre for *The Best Summer Ever*. She played the Stepmother in UW Stage Note's production of *Into the Woods* and served in crew positions for UW's *Romeo and Jules*, *The Addams Family* (Stage Notes), and *Pippin* (UW). While waiting for the resurrection of theatre, she has been busy working with young people at teen and arts centers and summer camps on Bainbridge Island and across the Seattle area.

## JEFFREY COOK

**SCENIC DESIGNER** – Jeffrey Cook is a Washington native, working throughout the Northwest since 1989. Previous SCT designs: *Naked Mole Rat Gets Dressed: The Rock Experience*, *Fire Station 7*, *Elephant and Piggie's* "We Are In A Play!", *The Garden of Rikki Tikki Tavi*. Jeffrey is the "In charge" scenic painter at SCT. Local designs include: The 5th Avenue Theatre (*Forum*, *Cinderella*), Village Theater (*The Gypsy King*), Harlequin Productions, Book-It, Tacoma Actors Guild, Taproot. He has designed the Winterfest décor, our cities official holiday event, at Seattle Center Armory and Ice Rink since 2008. Regional: Profile Theatre Project (Portland) and a dozen sets for Oregon Contemporary Theatre including *Tiny Beautiful Things*, *Clybourne Park*, *Next To Normal*. National: three years at the Denver Center Theatre (design and production studios), touring with *Thomas the Train Live on Stage*.

## RICK PAULSEN

**LIGHTING DESIGNER** – Is delighted to resume bringing this project to the stage after a 2-year pause. Rick's lighting has been seen in many shows at SCT including *Lilly's Purple Plastic Purse*, *Honus and Me*, *The Lion the Witch and the Wardrobe*, *Wizard of Oz*, *Sleeping Beauty*, and many others. His work has been seen in well over 200 productions in Seattle and around the country over the past 40 years. Rick is proud to be a member of United Scenic Artists Local USA 829.

## SARAH BURCH GORDON

**COSTUME DESIGNER** – Sarah Burch Gordon has been designing costumes in Seattle since 2005. Local favorite designs include: *Red Riding Hood* and *Balloonacy* at SCT; *Dracula*, *The Trial of Ebenezer Scrooge*, *Jane Eyre*, and *Persuasion* at Taproot Theatre Company; and *A Midsummer Night's Dream* at Edmonds Community College. Other than the pandemic induced sabbatical, she has been the Costume Shop Head here at SCT since 2017. Prior to that, she worked at Taproot Theatre Company as their Resident Costume Designer and Costume Shop Manager. Before moving to Seattle, she taught Costume Design at Mars Hill University in North Carolina. Other regional credits include working at Southern Appalachian Repertory Theatre, StageWest Theatre, and Venture Theatre Company. She is a two-time Gregory Award nominee and received her MFA in Costume Design from Temple University. In addition to being a costume designer, Sarah is an artist, writer, editor, and fairy godmother extraordinaire. Roses and parsnips to CLM.

## JOSEPH SWARTZ

**ASSISTANT SOUND DESIGNER** – Joseph Swartz (he/him) is a thirty-year veteran of the Seattle theatre community, and an eleven-year veteran of SCT, who also grew up seeing every SCT production at the Poncho Theatre (and others) throughout the 1980s. Previous SCT sound design team credits include *The Lion*, *The Witch*, and *The Wardrobe*, *Above-Below-Between*, and numerous Summer Season productions. A few favorite Seattle sound designs include *The Feast*, *Belleville*, and *Year Of The Rooster* for MAP Theatre; *Crime And Punishment*, *A Streetcar Named Desire*, and *To Kill A Mockingbird* for the old Intiman Theatre; and a 2013 production of *Cliffhanger* for Macha Monkey Theatre which earned him a Gregory Award nomination. Joseph is a Seattle native, a graduate of the Art Institute of Seattle (R.I.P.), and spends most of his days making or listening to music, collecting records, and watching his teenager play basketball.



# AUDIENCE MEMBER GUIDE

Experiencing the theatre is a group activity shared not only with the actors, but also with the people sitting around you. Your attention and participation help the actors perform better, and allows the rest of the audience to enjoy the show. ***We invite you to laugh when it is funny, cry when it is sad, gasp when it is shocking, but refrain from talking during the show, as it disturbs audience members and performers alike.***



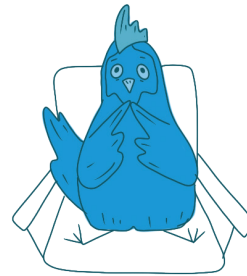
Leave cell phones, tablets, hand held games, and other distracting and noise-making electronic devices at home or turn them completely off.



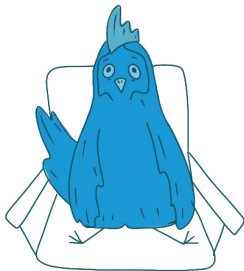
Don't talk with your neighbors during the play. It distracts people around you and the actors on stage.



The lights dimming and going out signal the audience to quiet down and settle in your seats: the play is about to begin.



During the curtain call remain in your seat and applaud because this is part of the performance too. The actors will come out on stage one more time to say thank you for your participation as an audience member.



Remain in your seat during the play. Please use the restroom before or after the show, as well as during intermission.



# BOARD OF DIRECTORS

**Anh Nguyen** *President*

**Laura Buckland** *Vice President*

**Shelly Heier** *Treasurer*

**Karin Jones** *Secretary*

---

Eve Alvord

April Berg

Shari Bitcon

Heather Blahous

Meghan Browne

Amy Chasanov

Roberto Dondisch

Bob Evans

Stacie Foster

Mimi Gan

Amanda Hicks

Cindy Jed

Bryan Kelley

Barbara Larimer

Winfield Martin

Kirsten Nesholm

Eleanor C. Nolan

Andrew Parcel

Louise Pietrafesa

Sally Rampersad

Lee-Norah Sanzo

Laura Smith

Constance Thompson

Katina Thornock

Jared Van Kirk

Wanda Wong

Winston Yeung

## FOUNDATION BOARD OF TRUSTEES

**Mig Schaaf** *Foundation President*

**Mark Sherman** *Foundation Vice President*

**Kerry Richards** *Foundation Secretary*

**Richard Bendix** *Foundation Treasurer*

**Mimi Kirsch** *Foundation Member*

**Laurie Oki** *Foundation Member*

**Anh Nguyen** *Association President*

**Laura Buckland** *Association Vice President*

**Karin Jones** *Association Secretary*

**Shelly Heier** *Association Treasurer*

**Eve Alvord** *Association Board Member*

**Lee-Norah Sanzo** *Association Board Member*

**Mimi Gan** *Association Board Member*

# SCT STAFF

## DIRECTORS

**Kevin Malgesini** *Managing Director*

## SENIOR STAFF

**Carolyn Holcomb** *Director of External Relations*

**Clare Hausmann Weiland** *Senior Director of Strategic Initiatives*

**Johamy Morales** *Director of Education and Engagement*

**Lesley Fox** *Director of Finance*

**Tony Froehlich** *Director of Operations*

**Will Cruttenden** *Interim Director of Production*

## ARTISTIC AND PRODUCTION

**AJ Hudson** *Lead Scenic Carpenter*

**Amanda Norman** *Costume & Wardrobe Swing*

**Angelo Domitri** *Stage Operations Head*

**Anna Bowen** *Charge Costume Fabricator*

**Austin Dolan** *Charge Stage Carpenter*

**Daphne Maurides** *Properties Shop Head*

**Emma Pihl** *Associate Director of Production*

**Erin Perona** *Charge Wardrobe Technician*

**Jeffrey Cook** *Charge Scenic Artist*

**Jordan "JZ" Zizzi** *Lead Electrician*

**Joseph Swartz** *Charge Sound Engineer*

**Kevin Wilson** *Lead Scenic Artist*

**Kyle Thompson** *Lead Sound Engineer*

**Louis McElrath** *COVID-19 Safety Manager*

**Matthew Osier** *Production Safety Head*

**Meryl Carson** *Stage Operations Swing*

**Paige Demasi** *Charge Scenic Carpenter*

**Sarah Gordon** *Costume Shop Head*

**Todd Peacock-Preston** *Charge Properties Artisan*

**Trick Danneker** *Executive Assistant & Casting Associate*

**Zach Danneker** *Technical Director*

**Zanna King** *Charge Electrician*

## EDUCATION & ENGAGEMENT

**Abby Sledge** *Education Registrar*

**Caitlyn Davis** *Drama School Operations Manager*

**Gabrielle Moore** *School Programs and Partnership Coordinator*

**Tiffany Maltos** *Associate Director of Education and Engagement*

**Yanci Huezio** *Education Fellow*

## EXTERNAL RELATIONS

**Andrew Shanks** *Sales Manager*

**Eliane Rodriguez** *Marketing Content Coordinator*

**Grace Green** *Field Trip Coordinator*

**Jeremy Berdin** *Ticket Office Representative*

**Jordan-Michael Whidbey** *Ticket Office Representative*

**Kanani Reichlin** *Data Operations Manager*

**Liz Houlton** *Institutional Relations Officer*

**Marlee Squires** *Development Coordinator*

**Michael Krenning** *Ticket Office Representative*

**Olivia Mangione** *Graphic Designer*

**Sofie Kline** *Individual Giving Manager*

## OPERATIONS & ADMINISTRATION

**Adrian Prendergast** *Receptionist*

**Anahita Sepehri** *Patron Services Representative*

**Charissa Adams** *Board Liaison & Operations Manager*

**Eric Bischoff** *IT Administrator*

**Erika Brown** *Front of House Manager*

**Mark Nebel** *Facilities Manager*

**Sam Taylor** *Patron Services Representative*

**Sara Castilleja** *Patron Services Representative*

**Sue McAllister** *Accounting Manager*

**Susanna Pugh** *Associate Director of Patron Experience*

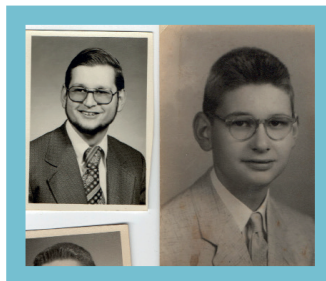
**Trick Danneker** *Executive Assistant & Casting Associate*



# IN MEMORY

# AN SCT

# PIONEER



Silas Livingstone Morse IV was hired by SCT in 1985 during our days in the Poncho Theatre at the Woodland Park Zoo. At that point in our history, SCT had a full-time staff of 11 employees, a 280-seat venue and an annual audience of 36,000 people. Si served as a Technical Director where he worked closely with Production Stage Manager, Linda-Jo Greenberg, and Artistic Director Emerita, Linda Hartzell, to create stunning and imaginative sets throughout his tenure.

Silas is remembered as a skilled designer, collaborator, and as a dedicated figure that launched SCT to a new professional level. He believed that young audiences deserved the most sophisticated work and cared deeply about SCT's mission of providing *professional* theatre to children of all ages. He helped to set the standard for the great work that is still displayed on our stages today.

When Silas departed in 1998, Seattle Children's Theatre staff had grown to over 200 employees, more than doubled the seating capacity, and the annual audience size had grown to more than 286,000 people. **On behalf of all of us at Seattle Children's Theatre, we thank Silas Morse for his many great accomplishments and for being a pivotal force that helped shape SCT into the national leader it is today.**



Photo Description- Past SCT staff and Seattle arts leaders break ground for what would become the site of Seattle Children's Theatre at 201 Thomas St. Silas was a major consultant with the architects and contractors who built the Charlotte Martin Theatre, completed in 1993.

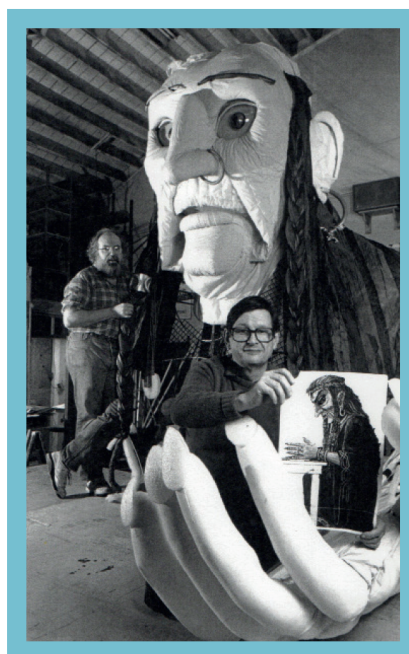


Photo Description- Silas Morse holding an original 20ft puppet design used in SCT's 93-94 season production of *Jack and the Beanstalk*.

This giant puppet required 5 actors to operate and even had an entire choreographed fight scene!

# OUR COMMUNITY PARTNERS

## SEASON SPONSORS



ARTSFUND



## STUDENT ACCESS SERIES SPONSORS



## COVID RELIEF

4Culture  
ArtsFund  
City of Seattle  
King County Covid Relief Fund  
NHL Seattle  
Safeco Insurance Fund &  
the Liberty Mutual Foundation  
School's Out Washington  
The Sheri & Les Biller Family Foundation  
Washington State Department of  
Commerce & ArtsFund

## COMMUNITY

### \$70,000 & Above

ArtsFund  
Bill & Melinda Gates Foundation  
King County's Revive and Thrive  
Arts and Culture Fund  
Microsoft  
Seattle Center\*\*  
The Norcliffe Foundation  
The Shubert Foundation

### \$25,000 – \$69,999

4Culture  
Anonymous Fund of the Philadelphia Foundation  
King County Council Member Jeanne Kohl-Welles  
King County Office of Performance/Strategy/  
Budget  
City of Seattle Office of Arts & Culture  
Keith & Mary Kay McCaw Family Foundation  
National Endowment for the Arts  
Nesholm Family Foundation  
Safeco Insurance Fund &  
the Liberty Mutual Foundation  
The Oki Foundation

### \$10,000 – \$24,999

Adrienne Coons Memorial Fund  
Amazon\*  
Grousemont Foundation  
King County Building for Equity program  
at 4Culture  
Moccasin Lake Foundation  
Northwest Asset Management\*\*  
The Sheri & Les Biller Family Foundation

### \$1,000 – \$9,999

Ash Consulting\*  
Caplin Foundation  
Gibson, Dunn & Crutcher LLP \*  
Horizons Foundation  
Lynden, Inc.\*  
The Morgan Fund at Seattle Foundation  
Poncho Legacy Fund  
Tulalip Tribes Charitable Contributions

## MATCHING GIFT COMPANIES

***Thank you to these companies who offer workplace giving and matching gift opportunities. Check to see if your company offers these benefits today!***

Adobe	Goldman, Sachs & Co.	ServiceNow
Balfour Beatty Company	Google	Tegna Foundation
BECU	Hewlett Packard	T-Mobile
Bill & Melinda Gates Foundation	Joshua Green Foundation	Verus Investments
BMGI	King County Employee Giving Program	Weyerhaeuser Company
Boeing	Laird Norton Company	
Bristol Myers Squibb	Microsoft	
Cambia Health Foundation	Nordstrom	
Costco Wholesale	Perkins Coie	
DocuSign	Premiera Blue Cross	
F5 Networks	Puget Sound Energy	
	Raikes Foundation	

# DONOR LIST

## INDIVIDUAL DONORS

***This listing reflects all gifts made July 1 2020 - January 20 2022***

*\*Represents a current SCT Association or Foundation Board Member*

### **Anonymous Donors- 102**

Gordon, Corie & Dutcher Adams	Paula Benson	Jennifer Burke	Jenny Cummins
Sheena Aebig & Eric Taylor	April & Brian Berg*	Blaire Burman	The Curran Family
Ayo Ajayi & Carla DewBerry	Jason Bergevin	Charles Butler	Marty & Steve Curry
Tae Akagi	Claudia Berman	Vera & Graham Byng	Mary Cutler
Collette & Anthony Alberts	Erin Bernau	Amy Calderwood & Ethan Melone	David Dabbon
Glenda M Aldana	Eileen Berner	Carrie Campbell	Kristen Dang
Kim Aldrich	Leslie Ray Bernstein	Hugh E. Campbell	Terry & AnnaLisa Danysh
Ron Aley	Aiko Bethea	Suzanne Canino	Allan & Nora Davis
Rene Alkoff	Amy Betz	Nuri Cankaya	Diane Davis
Julee Allen	Sara Bevington	Cathie Cannon	Duane & Lisa De Luca
Suzanne Allen	Kumaran Bhakthavachalam	Maura Cannon	Delaney & Justin Dechant
Chris & Alice Allen-Redfern	Erika & John Bigelow	Arlene & John Carpenter	Gretchen DeDecker
Edward & Joan Alschuler	John & Nazira Bigos	Kimberly Carper	Cristina del Amo Casado
Eve & Chap Alvord*	Brooke Billadeau & Shawn Miller	Dan Carroll & Karen Eddy	Erica & Ethan Delavan
Elias & Karyl Alvord	Suzette & James Birrell	Barbara Carter	Lowe & Whitney Delgado
Niki Amarantides	Eric Bischoff	Jessica Case	Ben & Kathy Derby
Jae Anderson	Shari Bitcon & Paul Donnelly*	Steve Goldstein & Mary Casey-Goldstein	Diane & Dan Dettling
Sandra & James Anderson	Erik & Donna Bjarke	Cesar Castelan	David & Helen Dichek
Shannon Anderson	Inez Noble Black	Amy Castillo	Magill Dickerson-Lange
Virginia Anderson	Emily Blahous	Joanne Cecchini	Priscilla & Dennis Dickert
Angela Shapiro	Ed & Heather Blahous*	Claire Chalfen	Marilyn Dillard
Joe Angelosanto	Cindy & Bob Blais	Anna Chapman	Bernadene Dochnahl
Melissa & Peter Aparico	Kari & Troy Blanton	Amy Chasanov & David Powers*	Lee & Mike Dombroski
Brynn Arborico	Paula Bock & Tao Kwan-Gett	Preetha Chatterjee	Sue Donaldson
Malia Arguello	Karen Boehmer	Phillip Chavira	Roberto & Cynthia Dondisch*
Holly Arsenault & Matthew Richter	Joan & Philip Bohn	Josephine Cheng	Andrea Donovan-DuPont
Alicia Arsene	Chris Borden	K. Cheng & R. Nelson	Stephens & Eleanor Dooley
Samantha Artherholt	Art Borst	Charles Chesnut III & Anna Chesnut	Carrie & Stephen Dossick
Sophie Ashton	Thomas Bouchard	Juno Choi	Jeanne Dougherty
Perry & Christine Atkins	Lisa Boyadjian & Chris Duval	Crystal Chor	Erika Dowd & Douglas Lanman
Allison Augustyn	Eloise Boyle & Jim Grams	Barbara & Ken Christoferson	Brian Downing
Milton & Sonia Aung	John Bradshaw	Kim Painter	Carmel & James Drage
Anna Avdeyeva	Stesha Brandon & Micah Skilling	Lorraine Cicci	Matt Draper
Wendal Ayars	Robin Bransford	Lynn Claudon & Charley Royer	Betty Drumheller
Diane Baer	Michael Breeden	The Clifford-Bush Family	Joshua Dubin
Tanya Bagley	Heather Bresnahan	Kirk & Deborah Clothier	Barbara J. Duffy & Philip J. Cammarano
Erika Bahnik	Ken Brewe	Karen & Samuel Coe	Phillip & Terra Duggan
Bruce Bailey & Heidi Barrett	Kenneth Brewe	Peter Coen	Susan Dunn
Karen Balek	Shira & Matthew Brewer	Dahlia Cohen	Deborah A. Dwyer
Dr. Mark & Ruth Balter	Jon & Bobbe Bridge	Tumaini Coker	Lisa Dykstra
Robert W. Baltz	Emmalee Briggs	Connor Colbert	Melissa & Mark Eamer
Lynette & Walt Bankowski	Robert & Susan Briggs	Amy Collis & Steve Houmes	Nancy Edwards
Joanna Barnebey	Maija Brissey	Lucrezia Colonna & Jalal Andre	Scott Edwards & Kimberly Larson
Amy Barnett & Arthur Furukawa	Addi Brooks & Bob Pennell	Lara & Peter Constable	Mike Egan
Vincent Barrailler	Alisha E. Brown	Erica Coogan	Peter & Deborah Ehrlichman
Samantha Barth	Gregory Brown	Erin & Greg Coomer	Claire Elam
Jacob Bartholomy	Molly Brown & Peter Ernst	Bonnie Brewer Corra	Lisa Elliott
Shari Basom	Meghan Browne*	Jennie Cowan	Christina Ellis
Sara & Stacy Branum	Jean Brumder	George & Carolyn Cox	The Enevoldsen Family
Pamela Beatty	Nancy Brunsvold	Preston Crane	Madeline Engel
Julie Beckman	Laura Buckland & Doug Young*	Shan Cretin	Michael & Lisa Erdely
Tanya Bednarski & Craig Johnson	Janina Buechner	Kristina Crothers & Mark Skirgaudas	Bridgett Ericksen
Jessie Beltran	Daniel Burdick	Barbara & James Crutcher	Jeanne Espinel
Richard & Debbie Bendix*	Kimberly Burgess Simms	Roxana Csibi	Sandi Espiritu
Ruth Benfield	Cindy & Henry Burgess	Angela Culbert & Ryan Bianchi	Jane Estevenin
	Rob & Melanie Burgess		



## INDIVIDUAL DONORS CONTINUED

Kenyatta Etchison & Nathan Freier	Tonia & Jay Goyal	Gary Holland & Jackie McGourty	Angela & Jacob Kirkman
Linda Ettinger	Rebecca & James Grandin	Kandace & Rick Holley	Bonnie L. Kirkpatrick
Bob Evans & Steve Davis*	Debbie & Dave Grant	Jana Hollingsworth	Mimi & Edward Kirsch*
Erica Evans	Jennifer Grant	John Holt & Susan Trainor Holt	Mark Wellington & Mariko Kita
Florence & R. F. Evans	Amelie & William Drake	Ina Holzer	William Kitchin
Emilie Ewart	Kristen Grant	Shirley Hong	Harriet & Norman Klein
Andrew & Lauren Exnicios	Lisa Greaves	Sara Hoofnagle	Amber & Aaron Kleiner
Emily Falls	Bev Greenberg	Melinda & Bob Hord	Madelyn & Edward Kline
Justin Fansler	Hillary Greene	Tami & Dan Horner	Sofie Kline
Andrew & Alexandra Farnum	The Grevstad Family	Robyn & Joshua Horton	Kathryn Klosky
Alfred Fatale III	Abigail Gross-Keck	Micah Horwith & Brady Walkenshaw	Rodger Kohn
Amy & Brian Fauska	Nancy Grossman & Erin Freeman	Bronwen Houck	Megan Kooistra
Carson Fayth	Jennifer & Roger Gulrajani	Maureen Howe	Karen Koon & Brad Edwards
Anthony Ferreira	Christina & Anoop Gupta	Kathy Hsieh	Claudette & Rob Krause
Melanie Field & Vinaya B. Chepuri	Gwen Gutow & Brian Crawford	Shirley Huang	Adrienne Krefft
Linda Finn	Matthew Gutschick	Judy Hucka & Ken Rosenthal	Paul Kreider
Angela Finney & Robert Mumford	Linda B Haas	Cynthia Huffman & Ray B. Heacox	Josh Krevitt
K. Denise Fischer-Fortier & James M. Fortier	Corinne & Russell Hagen	Pat & Mary Ellen Hughes	Meighan Krows
Deborah & Robert Fleming	Mary Haggard	Jane & Randall Hummer	The Krupin Family
Cecilia Flombaum	Jennifer Hall	Hope Hundley	Merran & John Kubalak
Tara Fly	Lorrie Hambling	GPMCH Foundation	Eileen Kulman
Tracy & Alice Forsythe	Kristen Hamilton	Eileen Hunt	Frida Kumar
Katrina Fortney	Bren Hammond	The Hunter Family	Tulika Kumar
Cynthia Foster	Paige Hansen-Shankar	Wendy Hutchins-Cook	Clarissa Kuo
Stacie Foster & Lawrence Cock*	Rachel Har	Samantha Inks	Kuo Choes
Brad & Linda Fowler	Emily Harmon	Ms. Mary Kae Irvin & Mr. Kelland Lindsey	Louise & Ned Kurabi
Katrina & Eric Frank	Sarah Potter	Jeff Jackson	Mutlu Kurtoglu
Tisha Frank & Moe Garcia	Kristine Haroldson	Craig & Joyce Jackson	Laura & John Kvasnosky
Kelly Frawley	Michael & Alison Harris	Robert & Carol Jaffe	Amma Kwateng
Elizabeth Frederick	Eric & Marie Harris	William & Patricia Jandl	Susan M Lacy
John Freeman & Cedar Burnett	Linda Hartzell & Mark Perry	Pamela Jardine	Dana Laird
Devin & Bridget Parry	Michele L. Hasson	Josh Jarrett	Diane Lampe
Sarah Friedman & Michael Burg	Hope Haugen	The Jed Family*	David Landau & Tanya Brunner
Alicechandra Fritz & Jeff Hazeltine	Clare Hausmann & Bill Weiand	Judy Jesiolowski & Dave Thompson	Steven Landau & Leah Ball
Susan & Albert Fuchs	Steve & Janise Hawes	Christina Jimenez	Phyllis Lane
Betti Fujikado & Derek Soo	Jill Hearne	Marcia Johnson Witter	Jane & Kenneth Lanier
Catherine Fullen	Ross & Lorna Heath	Colleen Johnson & Scott Simmons	Mary Lou & Bill Laprade
Michael L. Furst	Shelly & Jeffrey Heier*	Ted & Kris Johnson	Tatiana Lapushchik & Oleg Pshenitsyn
Sonia Gabrielson	Dorothy Heiret	Linda & Ted Johnson	Barb Larimer*
Katherine Galagan	Staci Heldring	Karin & Scott Jones	Ellin Larimer
Allen & Nina Galli	Justin Helmbrecht	Suzanne & Ernie Jones	Erika & Dave Larimer
Chenglin Gan	Peter Hendrickson	Amy Jurkiewicz	Kirby Larson
Jane Gan	Tonya Henninger	Ruth Kagi	Kimberly Larson-Edwards
Mimi Gan & Everett Billingslea*	Melissa Hensley	Tsigereda Kahssay	Kristin & Earl Lasher
Joanne Garrott	Paul Heppner	Mariko Kakiuchi & Thomas Voelk	Teresa Lavender
Judy Garry	Susan Hermanto	Christine Kakos & Steve Garlid	Mary Lear
Rebecca Gelber	Rebecca Hernandez	Carmen Kallis	Susan Leavitt & Bill Block
David Gelfand	Scott Jones & Liana Herron	Annie & Gregory Kammerer	Elizabeth Leber & Andrew Coveler
Carol George	Renee & Joshua Herst	Daniel Katzive	Edmond & Barbara Lee
James George	Richard & Marilyn Herzberg	Marion Katzive	Jerry & Charlene Lee
Ira & Courtney Gerlich	Andrew Hesky	Shari Kauls	Joseph Leinonen & Barbara Allen
Katharyn Alvord Gerlich	Nancy Hevly	Yoriko Kawaguchi	Keith Leitich
Karen Gliotti	Debbie & Dan Hicks	Tim Keller	Tom Lennon & Patricia Keegan
David & Anne Green Gilbert	Sydney & Jeff Higgins	April & Bryan Kelley*	Maura & Marc Lentini
Tiffany Gilbert & Ken Efta	Susan & Matthew Hillman	Debra Kelley	Janie Leonhardt & Nirav Patel
Isabella McCarthy family	Thomas & Erin Hirschler	Heather & Brian Kelly	Shawn & Michael LeValley
Ryan Glant & Alison Bettles	Kristen Hoehler & Spencer Curtis	Deborah Kennedy	Hallie B. Levin
Sean Goode	Kevin Hoffman	Ed & Mary Jo Kenney	Margaret & Ronald Levin
Gena Gorasht	Carol & Tom Hogan	Heidi Kenoyer	Laurie Levy
Agnes Govern & Mary Peterson	Karen Hogan-Li	Cindy Kimmerle	John Lillard & Julia H. Kalmus
Laura B. Gowen	Brenna & Jerry Holkins	Jonathan King	Howard Litwak

## INDIVIDUAL DONORS CONTINUED

Mark Lo & Shannon Quek	Barbara McPhee	Sue & Pat Noon	Bailey Reed
Lynn Loacker	Kelli McSherry	Bruce & Jeanne Nordstrom	Dinny & Alex Polson
Carol Logan	Joseph Melchiorre	Pat Norikane Logerwell	Missy Ponder-Reston
John Longshore	Mimi & Todd Menenberg	Ngozi Nwoko	Catherine Porciuncula & James Ayres
Jennifer Lopez	Robert Merriman	Suzann Oakes	Amanda Posch
Kathy Lopez	Jamie Merriman-Cohen	Ashley O'Connor McCready	Heather Powers
Louanne & Mark Lotz	Mary Metastasio	Sharron O'Donnell	Joelle Pretty
Donna Lou & Peter Bladin	Kristin Meyer	Jim & Young O'Hanlon	Deborah D Price
Elizabeth Luecker & Steve Vanslike	Margaret Meyer	Marlene & Robert Okell	Christina Prkic
Carlen Luke	Mickie Meyer	Suzanne O'Kelley	Kevin Proctor
Kim Lukens & Mark Jones	Daniel & Jessica Miller	Laurie & Scott Oki*	Angela Pruitt
Carol Lumb	Norma Miller & Eric Christianson	Alexandra & Paul Okner	Mary Pugh
CTL Scouting	Sheree Miller & Ben Greer	Lauren & Batur Oktay	Michelle & Karl Quackenbush
Gloria Lung Wakayama	Zori Miltcheva	Richard & Janet Olin	Jennifer Quedado
Stephen Lynch	Zoey & Jordan Minkove	Brooke & Frank O'Neal	David Quigg
Amanda Mack	Pamela & Donald Mitchell	Mary O'Neill	Deborah & Daniel Raas
Sarah Mack & Tom Bartholomew	Connie Moffit	Christine & Tyler Opp	Andrea Rabinowitz
The Mackey Family	Sierra Molton	Lisa & Keith Oratz	Olivia Raese
Liza Madison	Dori & Suzanne Monson	Darlene & Ryan O'Rourke	Suzanne Ragen
Kevin K Maifeld	Lynn Montgomery	Nancy & Marianne Orsen	Sue Ramaglia
Julie Malgesini	Katherine & Richard Moore	Theresa Ortega	Inderjeet Ramgotra
Kevin Malgesini & Johnathan Luster	Tiffany Moore	Ann Osterberg	Sally Rampersad*
Margaret Mallett	Ms. Emily Mora	Valorie & Larry Osterman	Ann Ramsay-Jenkins
Jennifer Manchester	Jennifer Moran	Susie & Michael Otten	Valerie Randall
Lauren Mandras	Leah Morck	Alison Overseth & Ken DeRegt	Lee Edlefsen & Susan Ranney
Kristin Mandt	Kathryn Morel	Maria & Michael Owen	Jamie & Michael Rawding
Joy & Chai Mann	Gena Morgan	Ann Owens	Charlene L. Rawlings
Jackie & Peter Mansfield	Julie & Scott Morgan	Theresa O'Young	Shawn & Mike Rediger
Sarah Marino	Martha Moritz	Michal Padera	The Reed Family
Sara Marks	Eleanor Moseley Pollnow & Charles Pollnow	David Paine	Kanani & Max Reichlin
Jillian Marsden & Ros Bond	Elizabeth & Allen Moses	Susan Pangilinan-Tiosejo	Drs. Kay & Scott Reichlin
Kelly Marshall	Anna & Andrew Mosier	Cheryl & Nathaniel Papadakis	Nancy Renkiewicz
Claudia Marston	Kara Moss	Lara Papadakis	Rosie Reynaud
Winfield B. Martin*	Marianne & Mark Mowat	Sandra Pappas	Cristine A. Reynolds
Cristina Martinez	Kristin & Jeremy Mull	Melisa Paramesvaran	Jean & Scott Rhodes
Bridgette & Brice Maryman	Nathaniel R Muller	Andrew & Carin Parcel*	Jewell Rhodes
Loyceta & Curtis Maslen	Carly Mungovan	Esther Park	Katherine Rice
Marcia J. Mason	Margarita Munoz	Kathleen Park	Steven & Fredrica Rice
Robin Mathew	Rebecca Murlless	Ruthanne Parker	Kerry Richards & Jan Arntz*
Lori Matsukawa	John & Nadine Murray	Haley Parks	Owen Richards
Laura & David Matter	Sara & Bill Nagel	Lisa Parrott	Sherry Richardson & Mark Stein
Patrick & DeeAnna Maughan	Andrea Nakata & Cheryl Gossman	Nikkita Patel	Rebecca Ringer
Sue & Andy McAllister	World Famous	Jill Patnode	Dr. Natasha Rivers
Rachel & Doug McCall	John Nebel	Michael Paul	Elizabeth Roach
Elizabeth McCauley	Parvoneh Neilsen	Susan Payne	Catherine & Thurston Roach
Elise McClure	Robert Nellams	Mary Paynter	Jana & Ben Robbins
Katy McCormick	Phil Neray	Cheryl Peach	Linda Robinson
Candice McCoy & Peter Tarczy-Hornoch	Kristen Nesholm*	Lenore Pearlman	Stephen Robinson
Myra & Mike McCoy	Betty Nes-Wabey	Nancy & Alan Pedersen	Jodi Robinson-Cody
Sandy McDade	Cassandra Newell	Ron Pederson & Jeff Sakuma	David & Michelle Rodriguez
M.J. & John McDermott	Anh M. Nguyen & Alex Rawson*	Susan Pendleton	Eliane Rodriguez
Debbie & Sean McDonald	Carla & Dean Nichols	Anna Pepper	Kathy Roeder
Kat & Matthew McGavick	Penny Nichols	Pearl & Cameron Percy	John & Patricia Rose
Dawn McHugh	Justin Nikbakshs	Krystal Perez	Doug & Debbie Rosen
Janet McInerney	Jill Nishi	Robert Vivian Jr. & Nanci Peterson-Vivian	Mimi Rosen
The Weiss-McKean Family	Alice Niu	Steven & Susan Petitpas	Laurie Rosen-Ritt & Steven Ritt
Howard & Melanie McKenzie	Judith Noble	Louise Pietrafesa & Anna Kaminski*	Valerie Rosinbum
Lara McKenzie-Heckert	Martha Noerr & Jeff Keane	Judy Pigott	Mae Rosok
John McLaughlin	Jarmila Noid-Liebrock & Michael Liebrock	Mary Pigott	Nicole & Joseph Ross
Nina McNamara	Eleanor & Charles Nolan*	Pineda Family	Christie Rotarius
Barbara McPhee		Kathryn Piscitello	Elizabeth Rudolf
		Donna & Kenny Pittman	

## INDIVIDUAL DONORS CONTINUED

Edgar Ruiz Silva  
 Stephen M. Rummage  
 Carole E. Rush & Richard Andler  
 Brad Ruskin  
 Scott & Danielle Ruthfield  
 Lori Rutman  
 Angelique Sabin  
 Bryan Saftler  
 Karen Sanderson  
 Lee-Norah Sanzo\*  
 Mary Lynn Sasso  
 Margaret Schaaf & Stuart Dunwoody\*  
 Howard Schanzer & Augusta Sedoff  
 Christopher Schenck & Sarah Martin  
 Carrie Schneider  
 Stephanie Scholl  
 Lisa Schroeder  
 Patrick & Kristen Schroeder  
 Robert & Judy Schuler  
 Jennifer Schwegler  
 Dianne Scott  
 Saurabh Sensharma  
 Michelle Serpas  
 Norma & Peter Shainin  
 Susan & Daniel Shames  
 John Sharify  
 Mark Sherman & Jennifer Daves\*  
 Pin-An Shih  
 Haeryung Shin & Andrew von Nordenflycht  
 Sarah Sidman  
 Stella Sieber  
 Stacie Siebrecht  
 Sonia Siegel Vexler & Paul Vexler  
 Margee Sigley  
 JoAnn Silkes  
 Robert Silverman & Lois Stiegemeier  
 Dee Simon  
 Jonas Simonis & Jillian Barron  
 Nancy Sisko  
 Shirley Slade  
 April & Roger Smith  
 Laura & Jim Smith\*  
 Warren & Nancy Smith  
 Matthew Smucker & Carol Roscoe  
 Rick & Gail Solomon  
 Jeffrey Spector  
 Mark & Sandra Spee  
 Lilian Speirs  
 Elaine Spencer & Dennis Forsyth  
 Naomi Spinak  
 Jennie S. Goldberg & Peter Stekel  
 Amy Stephenson  
 Cora Sterling  
 Delphine & Charles Stevens  
 Andrew Stinson  
 Rachel Stoermer  
 Heidi & Chris Stolte  
 Sheryl Straggi  
 Karen Strand  
 Ann Strickland  
 Jeanne Strickland

Carrie Stroud  
 Jenny Pang & Jeffrey Sullivan  
 Ann & John Summers  
 Alyssa & Bill Sunderland  
 Constance Swank  
 David Swanson  
 Mary Swenson  
 Lara Swimmer Photography  
 Linda Symons  
 Vasylyna Syrov  
 Walter S. Tabler  
 Mary Ellen Talley  
 Harold Taw & Katie Hong  
 Deborah & Justin Thenutai  
 Constance, Mychael, & Caleb Thompson\*  
 Matthew Thompson  
 Philip Thompson & Beth Dolliver  
 Stanford Thompson  
 Susan Thompson  
 Katina & Brad Thornock\*  
 Wei Tian & Yi-Ning Mei  
 Sarah Tien  
 Dennis Torres & Greg Mangum  
 Betty Lou Treiger  
 Patricia Trovato  
 Shirley & David Urdal  
 Eugene Usui  
 Deniz Uysal-Ferre  
 John A. Vadino  
 Emily Vajda  
 Holly Valentino  
 Michaela Valkova  
 Jared & Amanda Van Kirk\*  
 Sharon Van Kirk  
 Laurie VanderWeyst  
 Gina Vangelos & James Schneidmiller  
 Devorah Roth  
 Linda Venczel  
 Rodrigo Vergara  
 Arthur M. Vetter  
 Lynne Vigasaa  
 Fernando Viton  
 Sarah Vogt  
 Kathy Volrath  
 Nick Vossburg  
 Nancy Wainstein  
 Ellen Walker  
 Amy & Dennis Wallace  
 Paul Merry & Carrie Wallace  
 Julie & David Ward  
 Marylyn Ward & Jay Johnston  
 Victoria Warshaw  
 Judith Wasserheit & Jeffrey Harris  
 Jennifer Waterman  
 Kimberly Watson & Glen Draper  
 Karl Watt  
 Karen & David Waugh  
 Timothy Waxenfelter  
 Wendy Weaver  
 Walter Weber & Teri Kopp

Brandon Weil  
 Nancy Weintraub  
 Jarvis & David Weld  
 Sasha Welland & James Tweedie  
 Stephanie Wenglikowski  
 Judi & David Werner  
 Olivier Wevers  
 Kelly & Branston Weyer  
 Erika Whinihan  
 J Michael White  
 Sam Whiting  
 Heather Wilde, Jim Gierman, & Jules Gierman  
 Williams Miller Family Foundation  
 Carol Williams  
 Anneliott Willis  
 Jamie & Lisa Willis  
 Carol & Bryan Willison  
 Rosemary & Kenneth Willman  
 Clyde & Kathy Wilson  
 Karen & John Wilson  
 Adawna & Mark Windom  
 Anne Winkes  
 Trista Winnie Fraser  
 Valerie Winslow  
 Lora Wise  
 Daniel Witmer  
 Rob & Becky Witmer  
 Rebecca Wittmann  
 Ilana Wodlinger  
 Jodie Wohl & Richard Hert  
 Vickielee Wohlbach  
 David Wold  
 Jennifer Wolfe  
 Carey Wong & Thomas Campbell Household  
 Wanda Wong & Mark Masterson\*  
 Carrie Wood  
 Barbara Woodworth  
 Susan Worek  
 Christine Woskett & Neill Clift  
 Charles Wright Jr  
 Elaine Wu  
 Yi Xiao & Jiguang Shen  
 Laurie Yamamura  
 Megan Yoshimura & Allan Quiaoit  
 Judy Yu  
 Erin Zefkeles  
 Jamie Zembruski & Oliver Babson  
 Yuan Zheng  
 Wu Zhou & Alex Chou  
 Verónica Zidarich & Christian Schormann  
 Leslie Ziff  
 Sonia Zwilling



## IN HONOR OF

The Bitcon-Donnelly Family

Sylvia & Edmund Brandon

Mark W. Branom

Rena & Elliott Derse

Darcy Dixon & HP Canwell

Christian Duhamel

Ghosted

Tiffany Gilbert

Sue Elvrum & Steve Glass

Linda Hartzell

Talena Kelln & Reed Viydo

Kevin Malgesini

Sue, Andy, Maddie McAllistar

Kirsten Nesholm

The Oki Family

Louise Pietrafesa & Anna Kaminski (2)

Bill Robinson

Scott Ruthfield

Ken & Lucia Schubert

Virginia

Jo, Naomi & CC Werther

## IN MEMORY OF

Paul Bartelmes

Jeanne Ehrlichman Bluechel

Adrienne Coons

Gordon Evans (2)

Millie Hokanson

Jean Mataya

Beverly Morgan

Silas Livingstone Morse IV (2)

Theiline Scheumann



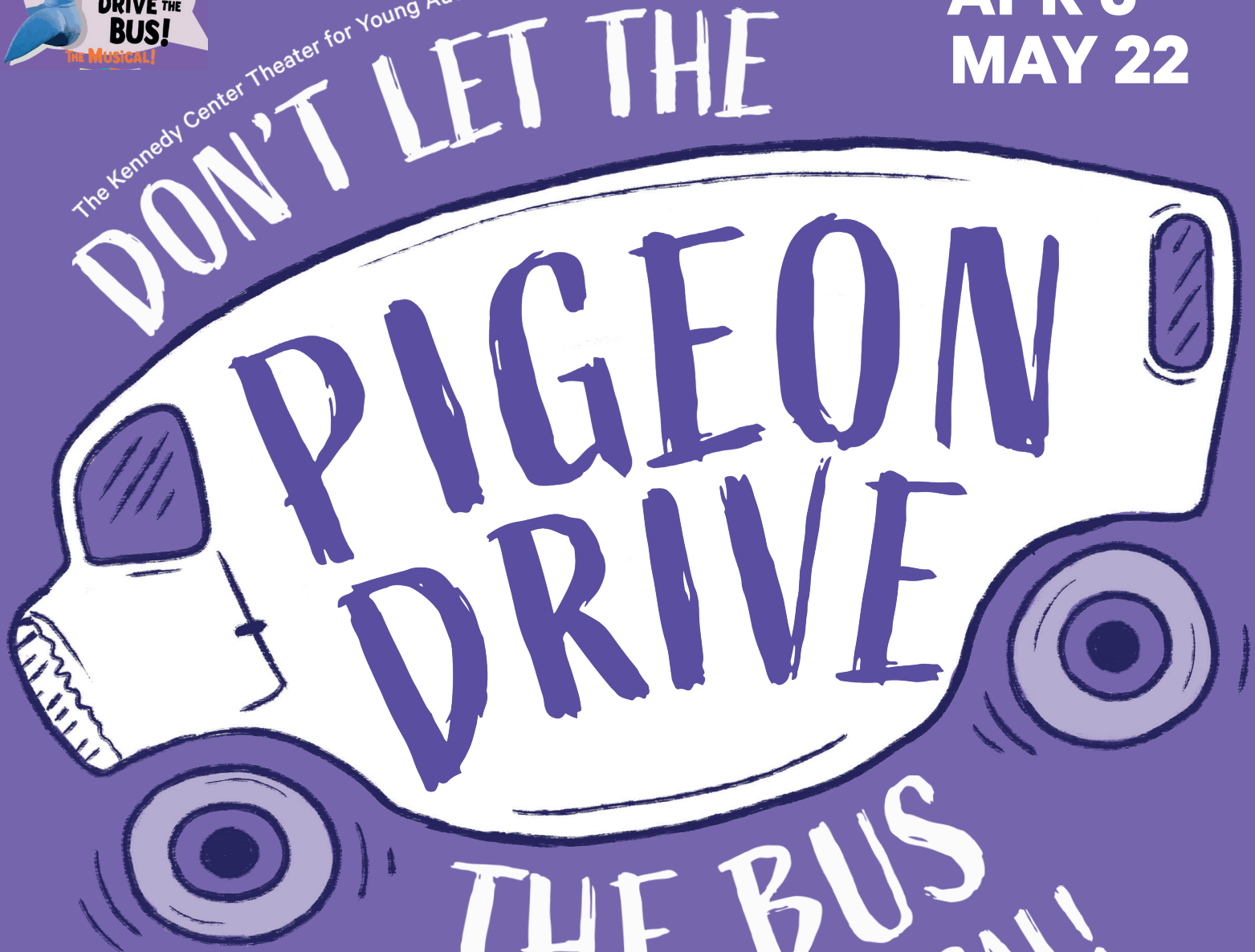
# NEXT UP

TICKETS FROM \$25 AT [WWW.SCT.ORG](http://WWW.SCT.ORG)



The Kennedy Center Theater for Young Audiences on Tour Presents

**APR 5 -  
MAY 22**



**THE BUS  
:THE MUSICAL!**

Based on the books by **Mo Willems**

By **Mo Willems & Tom Warburton**

Lyrics by **Mo Willems**

Music by **Deborah Wicks La Puma**





# SUMMER @ SCT

---

Explore our classes today

**[WWW.SCT.ORG](http://WWW.SCT.ORG)**